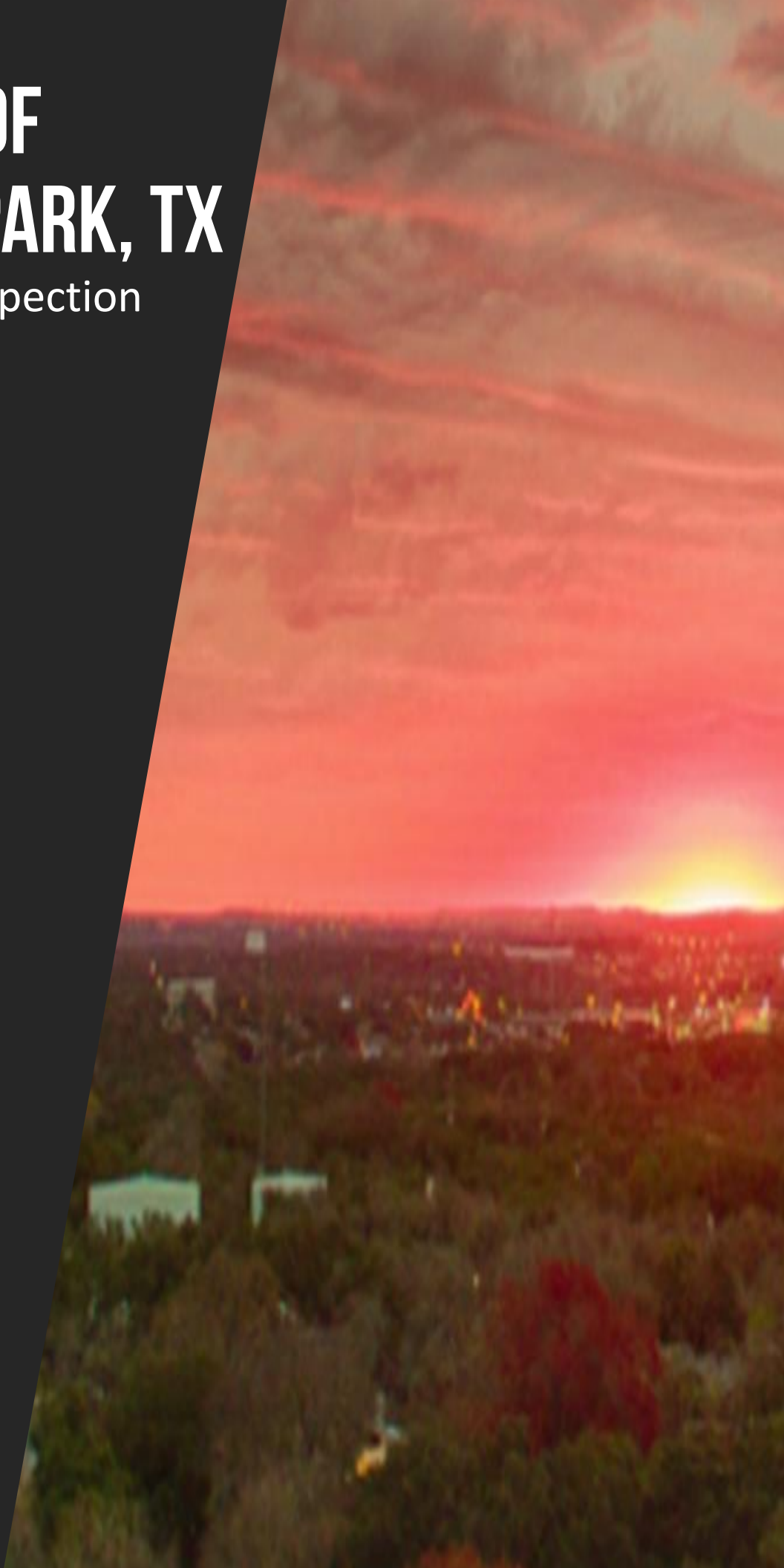


TOWN OF HOLLYWOOD PARK, TX

2025 Winter Inspection





HOLLYWOOD PARK 2025 WINTER INSPECTION REPORT

To: Frank Jaster, PE
Senior Project Manager
KCI Technologies Inc.
2806 West Bitters Rd, Suite 218
San Antonio, TX 78248

From: Daryl Spillmann, PE
Senior Project Engineer
RESPEC
84 NE Loop 410, Suite 100
San Antonio, TX 78216

Date: December 17, 2025

Subject: Semiannual Municipal Separate Storm Sewer System (MS4) Inspection

Dear Mr. Jaster,

RESPEC, Inc performed the semiannual MS4 inspection on behalf of KCI Technologies, Inc (KCI) for the Town of Hollywood Park (Town) in compliance with Texas Commission on Environmental Quality (TCEQ) reporting requirements to investigate and record:

- / Operational status of stormwater features within the Town limit
- / Features requiring maintenance
- / Locations where illicit discharge is occurring and;
- / Ensuring overall MS4 meets TCEQ requirements for reporting

Types of features inspected within the MS4 include but are not limited to: streets, storm drain inlets, culverts, basins, ponds, outfalls and LID features.

Drainage inlets were reviewed for storm drain medallions, which inform the public against illicit discharge into the MS4. Existing medallions were reviewed for damage and were replaced as needed, and medallions will be installed on inlets without markings.

Stormwater features found to have trash, debris, excess vegetation, or damage were recorded as requiring maintenance. Drainage of some features was also evaluated and features with poor drainage were also recorded as requiring maintenance.

Sites with apparent construction activities were also recorded.

Illicit discharge, as defined by TCEQ as: "Any discharge to a municipal separate storm sewer that is not entirely composed of stormwater", was also recorded. It is recommended to prioritize resolving and addressing areas with illicit discharge. Further, attached is the EPA "Illicit Discharge Detection and Elimination Program Development" publication which details identification and remediation of Illicit Discharges in MS4 systems.

84 NE LOOP 410, SUITE 100
SAN ANTONIO, TX 78216
210.248.0775
TEXAS REGISTERED FIRM F-17502



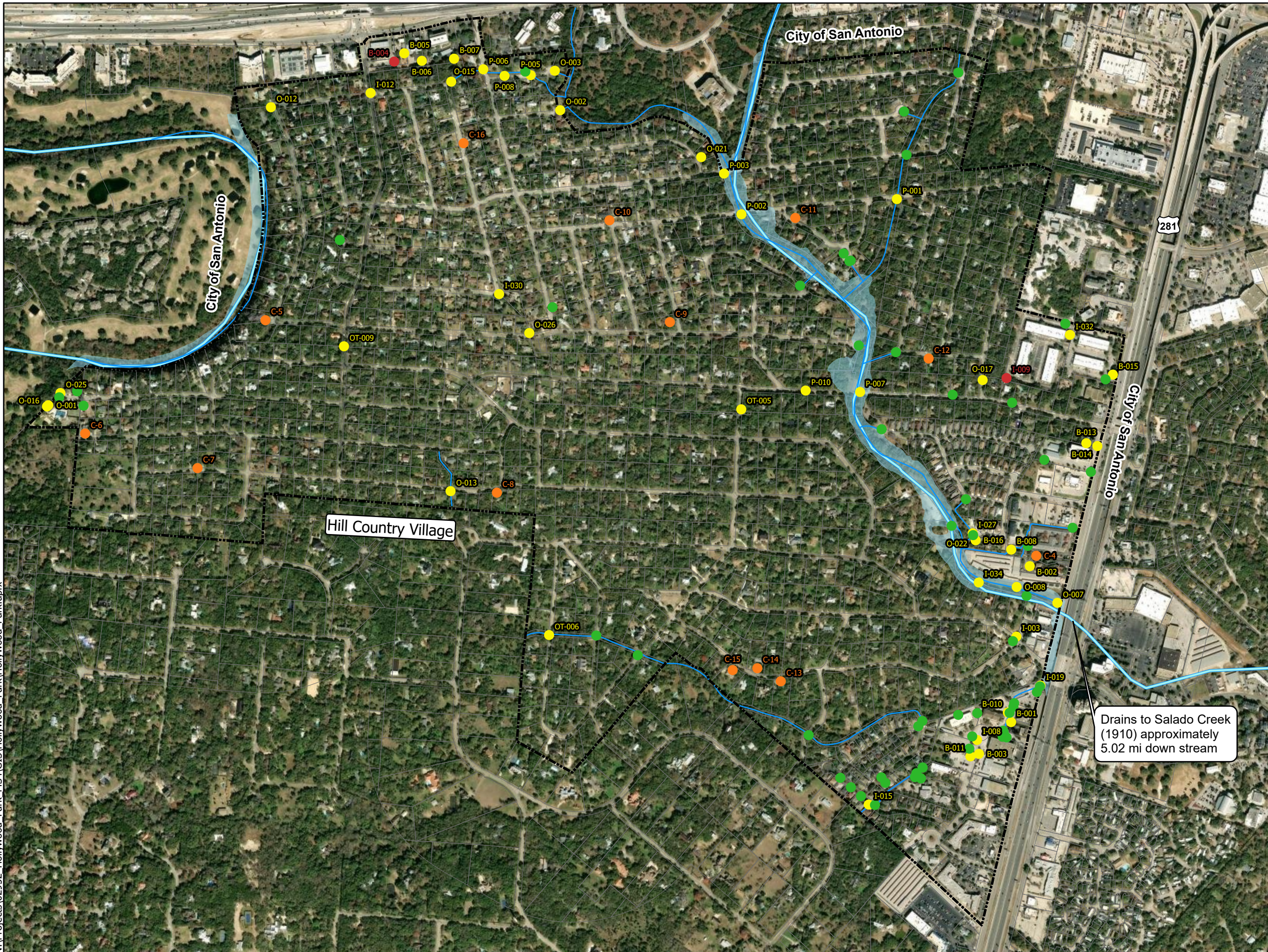
The table below summarizes the documented features inspected in winter of the 2025 report cycle:

Feature Status	Number of Features	Inspection Date	Next Inspection
Illicit Discharge	2	December 2025	Summer 2026
Maintenance Required	49	December 2025	Summer 2026
Construction Site	13	December 2025	Summer 2026

RESPEC has compiled a report of all winter 2025 stormwater inspection results containing:

- / Exhibit illustrating feature locations requiring action
- / Spreadsheet listing 2025 inspection records
- / Report outlining inspections, locations, and photos

N:\Projects\02952_Hollywood_Park_MS4\GIS\Hollywood_Park\Hollywood_Park.aprx



Legend

- City Limits
- Drainage Channels
- Streams
- Parcels

Status

- Construction Activity
- Illicit Discharge
- Needs Maintenance
- No Maintenance Required

TOWN OF HOLLYWOOD PARK STORM SEWER MAP WINTER 2025



N



0 400 800 Feet

 1 inch = 800 ft

Drains to Salado Creek
 (1910) approximately
 5.02 mi down stream

Drainage Features with Maintenance Required

Feature ID	Name	Feature	Maintenance
I-027	Amber Creek Drainage Channel (Inlet)	Inlet	Remove leaves/sediment
B-016	Amber Creek PCD	BMP	Trim vegetation at overflow channel
O-022	Amber Creek Southern Outfall and Channel	Outfall	Remove leaves/sediment
B-015	Chandler Signs North Park Corporate Center	BMP	Remove leaves/sediment and trim vegetation
B-007	Chicago Title PCD	BMP	Remove leaves/sediment
B-006	CRT Flooring Concepts	BMP	Remove leaves, sediment, and trash, and remove vines from fence.
P-010	Donella Culvert Crossing at Mustang	Pipe	Remove pumpkins
P-007	Donella Dr 2	Pipe	Remove pumpkins from channel
OT-005	El Cerrito Cir 2 LWC	Other	Clean flood gauge
OT-006	El Cerrito Cir LWC West	Other	Clean flood gauge
B-005	Express Lube PCD	BMP	Remove leaves/sediment and additional trash/rag near fence.
O-013	Fleetwood Dr	Outfall	Remove sediment/leaves from concrete riprap
I-030	Garrapata Ln	Inlet	Remove leaves/sediment
O-021	Grand Oak St	Outfall	Remove pumpkin from channel
B-010	Holiday Inn PCD	BMP	Remove trash/debris, fix gate latch and lock
I-009	Marriott Global Reservation PCD	Inlet	Remove cigarettes from channel and leaves from basin
I-003	MEC-I-2	Inlet	Remove debris preventing cover from closing
I-032	Miner Fleet PCD	Inlet	Trim vegetation and remove sediment
I-015	Navato Blvd 2	Inlet	Trim vegetation, remove brush
O-003	Northoak Dr	Outfall	Remove loose sediment from concrete riprap
P-005	Northoak Dr Crossing	Pipe	Trim vegetation
P-008	Northoak Dr Private Crossing West	Pipe	Trim vegetation
I-008	Oak Creek Ct	Pipe	Remove trash/debris
B-002	Optometrist Roundabout PCD	BMP	Replaced placard
B-008	Pantheon Commercial Strip PCD	BMP	Remove trash in BMP, adjacent channel full of sediment, vegetation, and trash
O-002	Park Oak	Outfall	Trim vegetation and remove hay bale from channel
O-015	Paseo Canada St 1	Outfall	Remove pumpkins from channel and rocks blocking culvert outfall
O-012	Paseo Canada St 2	Outfall	Remove glass bottle and pieces of paper in channel
B-013	PCD2 Pediatrics	BMP	Remove leaves/sediment
B-014	Pediatric Dentistry Office PCD	BMP	Remove trash/debris and remove sign and vegetation from basin
I-019	Premier 1 Autocare 2	Inlet	Trim vegetation
O-008	Public Storage	Outfall	Trim vegetation
O-026	Rua De Matta St Channel	Outfall	Trim vegetation and remove wood
P-003	Sagecrest Dr Crossing West	Pipe	Remove bucket from underneath culvert and pumpkins from channel
B-011	Service King Collision Repair Extended Parking PCD	BMP	Runoff/sediment control
B-003	Service King Collision Repair PCD	BMP	Trim vegetation
C-11	Spoil Pile Tall Oak Dr	Other	Spoil pile left out after construction. Needs a long term storage solution.
P-006	Sterling Browning Crossing	Pipe	Remove leaves/sediment and remove rocks from culvert inlets
I-034	Stream Gauge	Inlet	Remove leaves/sediment and trim vegetation
O-007	TXDOT at Lorence Creek	Outfall	Remove brush blocking 2 southern most box culverts
B-001	Valvoline PCD	BMP	Remove leaves/sediment
I-012	Voigt Dr Grate	Inlet	Remove trash/debris and monitor nearby traffic equipment
OT-009	Voigt Dr Leaves	Other	Remove leaves from the street
O-016	Voigt Park 3	Outfall	Trim vegetation
O-001	Voigt Park 4	Outfall	Trim vegetation
O-025	Voigt Park Outfall North	Outfall	Remove glass bottle and leaves from outfall
O-017	William Classen Dr	Outfall	Remove leaves/sediment
P-001	Yosemite Dr Crossing East	Pipe	Remove pumpkins from channel
P-002	Yosemite Dr Crossing West	Pipe	Remove pumpkins from channel

Illicit Discharge

Feature ID	Feature name/Location	Feature	Illicit Discharge
B-004	Corner Store PCD	BMP	Cigarette Butts around the outside of BMP
I-009	Marriott Global Reservation PCD	Inlet	Cigarettes in channel

Construction Activity

Feature ID	Feature name/Location	Feature	Construction Activity
C-4	Orthodontist Parking Lot	Construction	Runoff from Brookdale pushing lots of sediment to BMP in parking lot. Assuming may be broken sprinkler head on Brookdale side.
C-5	Home Build Canada Verde	Construction	Follow up on old construction site. Everything looks good.
C-6	Pool build near Voigt Park	Construction	Follow up inspection on home build. Looks good.
C-7	Home Build Fleetwood Dr	Construction	Monitor home build to ensure stormwater practices are in place
C-8	Active Construction Fleetwood	Construction	Monitor active construction site for appropriate stormwater measures
C-9	Construction Casa del Vista	Construction	Follow up inspection of construction site
C-10	Active Construction Yosemite	Construction	Monitor active construction site for stormwater measures
C-11	Spoil Pile Tall Oak Dr	Other	Spoil pile left out after construction. Needs a long term storage solution.
C-12	Active Construction Tiger Tail	Construction	Monitor active construction for stormwater measures
C-13	Backyard construction	Construction	-
C-14	House construction	Construction	-
C-15	New home build	Construction	-
C-16	Active Construction Alcalde Moreno	Construction	Active construction, monitor stormwater measures

Drainage Features with Medallions

Name	Feature
Parking lot Box Inlet	Inlet
Cascade Glen Sidewalk Drain	Inlet
Oak Creek Circle Inlet	Inlet
Oak Creek Circle Inlet-2	Inlet
MEC-I-1(M)	Inlet
Oak -I-2(M)	Inlet
Oak-1-1(M)	Inlet
New Drash Parkinglot Box Inlet	Inlet
ANT-I-1	Inlet
Navato Blvd Inlet	Inlet
Optometrist Roundabout PCD	PCD
Donella Inlet Box	Inlet
MEC-I-2(M)	Inlet
Amber Creek Inlet	Inlet
Varco	Inlet
Varco2	Inlet
Chula Vista Dr Inlet	Inlet

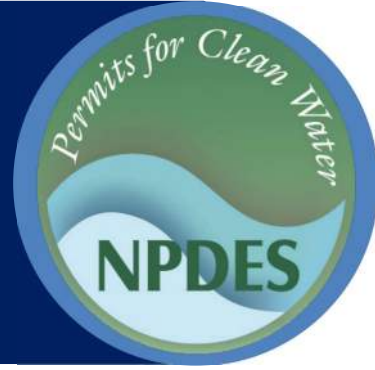


= Replaced stormwater medallion



Stormwater Best Management Practice

Illicit Discharge Detection and Elimination Program Development



Minimum Measure: Illicit Discharge Detection and Elimination and the Subcategory
Subcategory: Developing an IDDE Program

Description

Illicit discharges generally include any discharge into a municipal separate storm sewer system (MS4) permitted storm drain that does not consist entirely of stormwater. Illicit discharges are a problem because, unlike wastewater that flows to a treatment plant, stormwater generally flows to waterways without any additional treatment. Illicit discharges can contain pathogens, nutrients and various toxic chemicals. Common examples of illicit discharges include concrete or paint washout, waste from restaurants and mechanics, trash, and sewage.

Exceptions are referred to as “allowable discharges,” and each MS4’s permit outlines them. They typically include water from firefighting activities and residential car washes, potable water, and discharges from facilities already under a National Pollutant Discharge Elimination System permit.

Program Development

MS4s need to develop an illicit discharge detection and elimination (IDDE) program, which primarily includes creating:

- Storm sewer system maps
- Ordinances prohibiting illicit discharges
- Inspection and enforcement programs
- Education programs on the hazards associated with illicit discharges
- Plans to detect and address illicit discharges

As the name “IDDE” suggests, detecting and addressing illicit discharges are the main goals of an IDDE program. Illicit discharges have two modes of entry into the MS4: direct or indirect entry. Direct entry means the source connects directly to the MS4 through a pipe or drain-type conveyance. Examples of direct discharges are sanitary sewer cross connections or straight pipes intentionally connected to the MS4. Indirect entry occurs when the source of the illicit discharge flows into the MS4 via



Potential illicit discharge flowing out of a concrete outfall. Confirming an illicit discharge may require sampling or other investigative methods to determine the pollutant and responsible party.

Credit: Photo by Pikrepro

storm drain inlets or infiltration through cracks or joints in the storm sewer network. Indirect entry is far more common than direct entry. Examples of sources of indirect entry include failing septic systems, sanitary sewer overflows, groundwater seepage, spills and dumping, irrigation, and washing activities. The *Illicit Discharge Detection and Elimination* guidance manual (see link below) contains additional information.

Sewage has the greatest potential to produce direct illicit discharges within any urban sub-watershed, regardless of the diverse land uses that the sub-watershed comprises. The most common sewage-related direct discharges are broken sanitary sewer lines, cross connections and straight pipe discharges. There are a variety of techniques to locate and eliminate illegal sewage connections, including tracing sewage flows from the stream or outfall back up the sewer system or conveyances to reach the problem connection. Sewage can also be linked to significant indirect illicit discharges in the form of sanitary sewer overflows, sewage infiltration/inflow and sewage dumping from recreational vehicles.

An effective IDDE program should be proactive to prevent and eliminate illicit discharges through

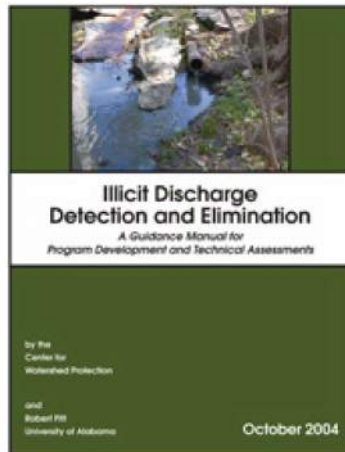
education, training and enforcement. However, the program should also be reactive to address any spills and other illicit discharges to the storm drain system that it detects.

It is also important for MS4s to develop the program to match the needs and concerns of the local community. MS4s typically have flexibility to implement their IDDE programs to address community-specific problems while meeting the specific permit requirements.

EPA developed several documents for MS4s working to develop an IDDE program and to address non-stormwater discharges in their community:

- *Illicit Discharge Detection and Elimination: A Guidance Manual for Program Development and Technical Assessments* is a comprehensive manual outlining practical, low-cost and effective techniques for stormwater program managers and practitioners.

The guidelines include details on creating and managing other aspects of an IDDE program, timelines that estimate how long program implementation will take, information on estimating program costs in terms of capital and personnel expenses, and types of testing to detect stormwater illicit discharges. This manual provides valuable guidance for communities and others seeking to establish IDDE programs.



- EPA's stormwater *Phase II fact sheet on the IDDE minimum control measure* provides examples of illicit discharges and general guidance for developing an IDDE program's framework. This fact sheet provides helpful guidance for new programs and/or staff looking to start an IDDE program.
- EPA's *Trash-Free Waters* Web site and *Aquatic Trash Prevention National Great Practices Compendium* are useful resources for educating the public about impacts and ways to prevent trash from entering waterbodies. The compendium highlights outstanding activities, technologies and programs

that prevent trash from entering the aquatic environment and/or that reduce the overall volume of trash generation.

- EPA produced the *Illegal Dumping Control* fact sheet to give communities a toolkit of effective practices for combating illegal dumping. The fact sheet discusses the importance of not only abatement and enforcement, but also public education and providing bulk trash pickup services.
- EPA developed a fact sheet on controlling *non-stormwater discharges* to the storm drain system. This fact sheet provides information on the potential environmental and public health concerns associated with non-stormwater discharges and means to detect and eliminate any non-stormwater discharges, such as sewage or process water discharges.
- *Community Solutions for Voluntary Long-Term Stormwater Planning* describes how to develop a comprehensive long-term community stormwater plan that integrates stormwater management with a community's broader plans for economic development, infrastructure investment and environmental compliance. Through this approach, communities can prioritize actions related to stormwater management as part of capital improvement plans, integrated plans, master plans or other planning efforts.
- EPA developed an *integrated planning* framework that offers a voluntary opportunity for a municipality to develop an integrated plan to meet multiple Clean Water Act requirements. An integrated plan is a process that identifies efficiencies from separate wastewater and stormwater programs to best prioritize capital investments and achieve our human health and water quality objectives. This approach can also lead to more sustainable and comprehensive solutions, such as green infrastructure, that improve water quality and provide multiple benefits that enhance community vitality.
- EPA provides *illicit discharge ordinances* as examples for local governments. They include language to address general illicit discharges, as well as illicit connections from industrial sites. EPA borrowed the language from a number of ordinances, and communities will need to assess what enforcement methods are appropriate for their areas.

- EPA has developed fact sheets to help communities address cross-contamination of stormwater with wastewater. Wastewater can impact stormwater quality through sanitary sewer overflows, cross connections, and failing or improperly maintained septic systems.

the Keep It Clean Partnership—a coalition of Phase II MS4s in Boulder County, Colorado—which developed [industry-specific fact sheets](#) explaining how local businesses can best manage restaurants, pressure washers, landscapers, carpet cleaners and car washes to protect local waterways.

Other Online Stormwater Resources

There are many successful IDDE programs around the country. Newly developed or established programs looking to expand their capabilities should look to other programs’ successes to continue to build on existing techniques and methods. Examples of municipal IDDE programs include the following:

- [Berkeley County, South Carolina](#), has developed extensive guidance and multiple methods for the public to report illicit discharges, including a phone number, email address and social media accounts.
- [King County, Washington](#), has developed a source-tracing guidance manual that outlines how municipal staff respond to observed and reported illicit discharges.

Many local governments and watershed groups have developed fact sheets for businesses that have high potential to create illicit discharges. One such example is

IDDE Best Management Practice Fact Sheets

EPA has developed the following fact sheets, which describe best management practices and generally provide applicability, implementation and effectiveness information to help municipal stormwater and construction site operators comply with the stormwater Phase II requirements.

Developing an IDDE Program

- Preventing Stormwater Contamination from Sanitary Sewage

Trash and Illegal Dumping

- Developing a Used Oil Recycling Program
- Illegal Dumping Control

Decentralized Wastewater

- Preventing Stormwater Contamination from Septic System Failure

Public Reporting

- Community Hotlines

Additional Information

[Additional information on related practices and the Phase II MS4 program can be found at EPA’s National Menu of Best Management Practices \(BMPs\) for Stormwater website](#)

Disclaimer

This fact sheet is intended to be used for informational purposes only. These examples and references are not intended to be comprehensive and do not preclude the use of other technically sound practices. State or local requirements may apply.

Stormwater Control Location Information

Location ID: 11034
Location Description: Private
Type: Outfall
Latitude: 29.603219
Longitude: -98.493062
Current Maintenance Status: No Maintenance Required



Inspection Date	Inspector Name	Maintenance Type	Notes
-----------------	----------------	------------------	-------

12/9/2025	Jones Ard		
-----------	-----------	--	--



Stormwater Control Location Information

Location ID: B-001
Location Description: Valvoline PCD
Type: BMP
Latitude: 29.591517
Longitude: -98.474603
Current Maintenance Status: Needs Maintenance



Inspection Date	Inspector Name	Maintenance Type	Notes
12/9/2025	John Sablan	Remove Leaves/Sediment	



Stormwater Control Location Information

Location ID: B-002
Location Description: Optometrist Roundabout PCD
Type: BMP
Latitude: 29.595278
Longitude: -98.47408
Current Maintenance Status: Needs Maintenance



Inspection Date	Inspector Name	Maintenance Type	Notes
12/9/2025	John Sablan	Remove Leaves/Sediment	Replaced placard



Stormwater Control Location Information

Location ID: B-003
Location Description: Service King Collision Repair PCD
Type: BMP
Latitude: 29.59075
Longitude: -98.475436
Current Maintenance Status: Needs Maintenance



Inspection Date	Inspector Name	Maintenance Type	Notes
12/9/2025	John Sablan	Trim Vegetation	



Stormwater Control Location Information

Location ID: B-004
Location Description: Corner Store PCD
Type: BMP
Latitude: 29.607578
Longitude: -98.491624
Current Maintenance Status: Illicit Discharge



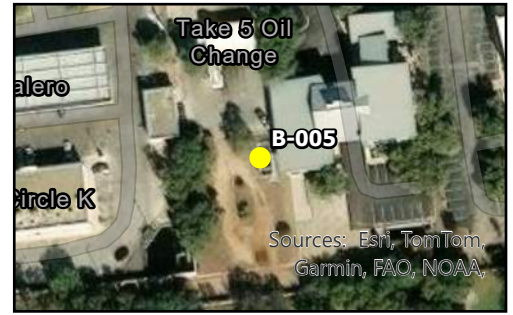
Inspection Date	Inspector Name	Maintenance Type	Notes
-----------------	----------------	------------------	-------

12/9/2025	Jones Ard	Remove Trash/Debris	Remove cigarette butts around the outside of BMP and clean up acorns and trash that have collected in the channel, grate, and basin.
-----------	-----------	---------------------	--



Stormwater Control Location Information

Location ID: B-005
Location Description: Express Lube PCD
Type: BMP
Latitude: 29.607812
Longitude: -98.491341
Current Maintenance Status: Needs Maintenance



Inspection Date	Inspector Name	Maintenance Type	Notes
12/9/2025	Jones Ard	Remove Leaves/Sediment	Remove additional trash/rag near fence.



Stormwater Control Location Information

Location ID: B-006
Location Description: CRT Flooring Concepts
Type: BMP
Latitude: 29.607619
Longitude: -98.490902
Current Maintenance Status: Needs Maintenance



Inspection Date	Inspector Name	Maintenance Type	Notes
12/9/2025	Jones Ard	Remove Leaves/Sediment	Also remove vines from fence and trash from grate.



Stormwater Control Location Information

Location ID: B-007
Location Description: Chicago Title PCD
Type: BMP
Latitude: 29.607645
Longitude: -98.489883
Current Maintenance Status: Needs Maintenance



Inspection Date	Inspector Name	Maintenance Type	Notes
12/9/2025	Jones Ard	Remove Leaves/Sediment	



Stormwater Control Location Information

Location ID: B-008
Location Description: Pantheon commercial Strip PCD
Type: BMP
Latitude: 29.595683
Longitude: -98.474413
Current Maintenance Status: Needs Maintenance

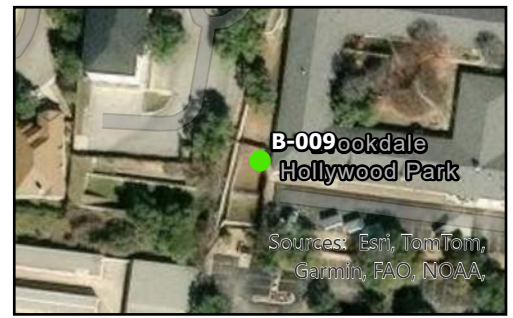


Inspection Date	Inspector Name	Maintenance Type	Notes
12/9/2025	John Sablan	Remove Trash/Debris	Remove trash in BMP, adjacent channel full of sediment, vegetation, and trash



Stormwater Control Location Information

Location ID: B-009
Location Description: Brookdale PCD
Type: BMP
Latitude: 29.595694
Longitude: -98.474113
Current Maintenance Status: No Maintenance Required



Inspection Date	Inspector Name	Maintenance Type	Notes
12/9/2025	John Sablan		Looks good monitor sediment buildup

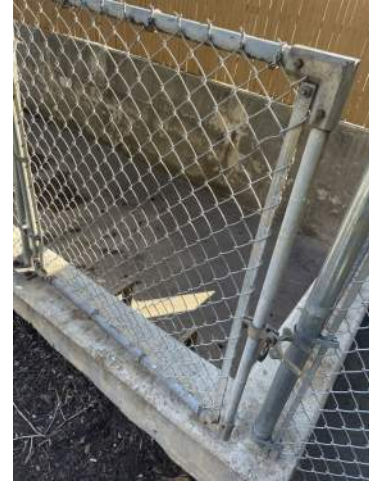


Stormwater Control Location Information

Location ID: B-010
Location Description: Holiday Inn PCD
Type: BMP
Latitude: 29.591731
Longitude: -98.47466
Current Maintenance Status: Needs Maintenance



Inspection Date	Inspector Name	Maintenance Type	Notes
12/9/2025	John Sablan	Remove Trash/Debris	Fix gate latch and lock

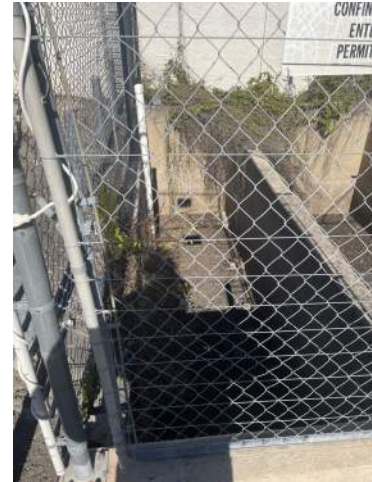


Stormwater Control Location Information

Location ID: B-011
Location Description: Service King Collision Repair Extended Parking PCD
Type: BMP
Latitude: 29.590678
Longitude: -98.475728
Current Maintenance Status: Needs Maintenance



Inspection Date	Inspector Name	Maintenance Type	Notes
12/9/2025	John Sablan	Runoff/Sediment Control	



Stormwater Control Location Information

Location ID: B-012
Location Description: Permeable Pavers
Type: BMP
Latitude: 29.59933
Longitude: -98.500233
Current Maintenance Status: No Maintenance Required



Inspection Date	Inspector Name	Maintenance Type	Notes
12/9/2025	Jones Ard		



Stormwater Control Location Information

Location ID: B-013
Location Description: PCD2 Pediatrics
Type: BMP
Latitude: 29.598283
Longitude: -98.472417
Current Maintenance Status: Needs Maintenance



Inspection Date	Inspector Name	Maintenance Type	Notes
12/9/2025	Jones Ard	Remove Leaves/Sediment	



Stormwater Control Location Information

Location ID: B-014
Location Description: Pediatric Dentistry Office PCD
Type: BMP
Latitude: 29.598186
Longitude: -98.472159
Current Maintenance Status: Needs Maintenance



Inspection Date	Inspector Name	Maintenance Type	Notes
12/9/2025	Jones Ard	Remove Trash/Debris	Remove sign and vegetation

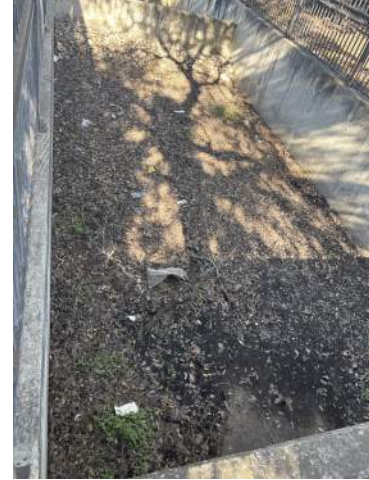


Stormwater Control Location Information

Location ID: B-015
Location Description: Chandler Signs North Park Corporate Center
Type: BMP
Latitude: 29.599954
Longitude: -98.471723
Current Maintenance Status: Needs Maintenance



Inspection Date	Inspector Name	Maintenance Type	Notes
12/9/2025	Jones Ard	Remove Leaves/Sediment	Also trim vegetation



Stormwater Control Location Information

Location ID: B-016
Location Description: Amber Creek PCD
Type: BMP
Latitude: 29.595877
Longitude: -98.475487
Current Maintenance Status: Needs Maintenance



Inspection Date	Inspector Name	Maintenance Type	Notes
12/9/2025	John Sablan	Trim Vegetation	Trim vegetation at overflow channel

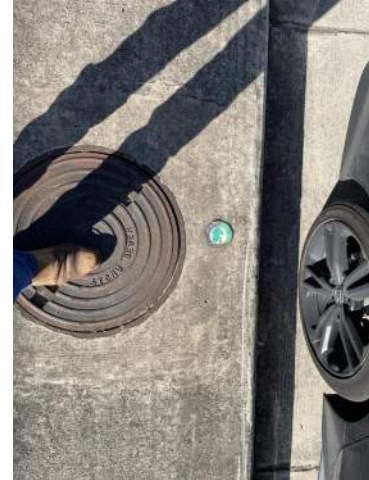


Stormwater Control Location Information

Location ID: I-001
Location Description: OAK-1-1
Type: Inlet
Latitude: 29.591142
Longitude: -98.474825
Current Maintenance Status: No Maintenance Required



Inspection Date	Inspector Name	Maintenance Type	Notes
12/9/2025	John Sablan		



Stormwater Control Location Information

Location ID: I-002
Location Description: MEC-I-1
Type: Inlet
Latitude: 29.59347
Longitude: -98.474511
Current Maintenance Status: No Maintenance Required



Inspection Date	Inspector Name	Maintenance Type	Notes
12/9/2025	John Sablan		



Stormwater Control Location Information

Location ID: I-003
Location Description: MEC-I-2
Type: Inlet
Latitude: 29.59357
Longitude: -98.474433
Current Maintenance Status: Needs Maintenance



Inspection Date	Inspector Name	Maintenance Type	Notes
12/10/2025	John Sablan	Other	Remove debris preventing cover from closing



Stormwater Control Location Information

Location ID: I-004
Location Description: ANT-1-1
Type: Inlet
Latitude: 29.590146
Longitude: -98.478146
Current Maintenance Status: No Maintenance Required



Inspection Date	Inspector Name	Maintenance Type	Notes
12/9/2025	John Sablan		



Stormwater Control Location Information

Location ID: I-005
Location Description: ANT-1-2
Type: Inlet
Latitude: 29.59141
Longitude: -98.477155
Current Maintenance Status: No Maintenance Required



Inspection Date	Inspector Name	Maintenance Type	Notes
12/9/2025	John Sablan		



Stormwater Control Location Information

Location ID: I-006
Location Description: Cascade Glen Sidewalk
Type: Inlet
Latitude: 29.5969
Longitude: -98.475875
Current Maintenance Status: No Maintenance Required



Inspection Date	Inspector Name	Maintenance Type	Notes
12/9/2025	John Sablan		



Stormwater Control Location Information

Location ID: I-007
Location Description: Amber Creek
Type: Inlet
Latitude: 29.596036
Longitude: -98.475598
Current Maintenance Status: No Maintenance Required



Inspection Date	Inspector Name	Maintenance Type	Notes
12/9/2025	John Sablan		



Stormwater Control Location Information

Location ID: I-008
Location Description: Oak Creek Ct
Type: Inlet
Latitude: 29.59115
Longitude: -98.475654
Current Maintenance Status: Needs Maintenance



Inspection Date	Inspector Name	Maintenance Type	Notes
12/10/2025	John Sablan	Trim Vegetation	Replacing medallion

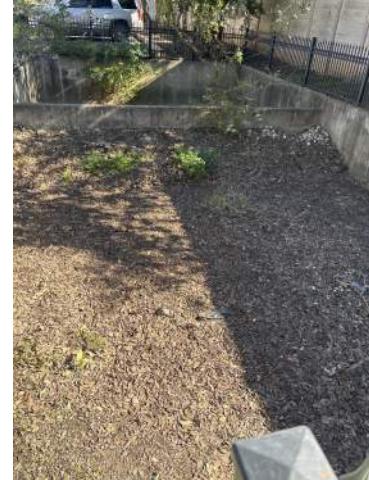


Stormwater Control Location Information

Location ID: I-009
Location Description: Marriott Global Reservation PCD
Type: Inlet
Latitude: 29.59983
Longitude: -98.474616
Current Maintenance Status: Illicit Discharge



Inspection Date	Inspector Name	Maintenance Type	Notes
12/9/2025	Jones Ard	Remove Leaves/Sediment	Cigarettes in channel. Also remove leaves from basin.



Stormwater Control Location Information

Location ID: I-010
Location Description: Monarch Trophy PCD
Type: Inlet
Latitude: 29.590797
Longitude: -98.47576
Current Maintenance Status: No Maintenance Required



Inspection Date	Inspector Name	Maintenance Type	Notes
-----------------	----------------	------------------	-------

12/9/2025 John Sablan



Stormwater Control Location Information

Location ID: I-011
Location Description: Monarch Trophy Swale
Type: Inlet
Latitude: 29.591094
Longitude: -98.474776
Current Maintenance Status: No Maintenance Required



Inspection Date	Inspector Name	Maintenance Type	Notes
12/9/2025	John Sablan		



Stormwater Control Location Information

Location ID: I-012
Location Description: Voigt Dr Grate
Type: Inlet
Latitude: 29.606858
Longitude: -98.492292
Current Maintenance Status: Needs Maintenance

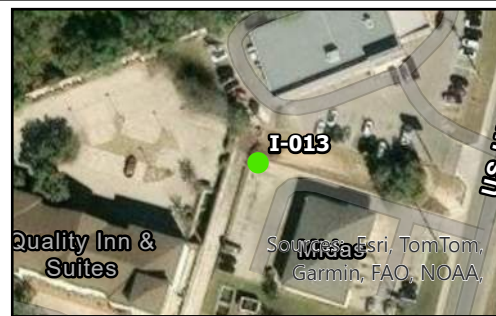


Inspection Date	Inspector Name	Maintenance Type	Notes
12/10/2025	Jones Ard	Remove Trash/Debris	Monitor nearby traffic equipment



Stormwater Control Location Information

Location ID: I-013
Location Description: Midas Inlet in Rear
Type: Inlet
Latitude: 29.591877
Longitude: -98.475195
Current Maintenance Status: No Maintenance Required



Inspection Date	Inspector Name	Maintenance Type	Notes
12/9/2025	John Sablan		



Stormwater Control Location Information

Location ID: I-014
Location Description: OAK-1-2
Type: Inlet
Latitude: 29.589127
Longitude: -98.474779
Current Maintenance Status: No Maintenance Required



Inspection Date	Inspector Name	Maintenance Type	Notes
12/9/2025	John Sablan		



Stormwater Control Location Information

Location ID: I-015
Location Description: Navato Blvd 2
Type: Inlet
Latitude: 29.589509
Longitude: -98.47854
Current Maintenance Status: Needs Maintenance



Inspection Date	Inspector Name	Maintenance Type	Notes
12/9/2025	John Sablan	Trim Vegetation	Remove bush



Stormwater Control Location Information

Location ID: I-016
Location Description: Voigt Park 1
Type: Inlet
Latitude: 29.599626
Longitude: -98.500509
Current Maintenance Status: No Maintenance Required



Inspection Date	Inspector Name	Maintenance Type	Notes
12/9/2025	Jones Ard		



Stormwater Control Location Information

Location ID: I-017
Location Description: Premier Autocare 3 (North Grate)
Type: Inlet
Latitude: 29.592499
Longitude: -98.47372
Current Maintenance Status: No Maintenance Required



Inspection Date	Inspector Name	Maintenance Type	Notes
-----------------	----------------	------------------	-------

12/9/2025	John Sablan		
-----------	-------------	--	--



Stormwater Control Location Information

Location ID: I-018
Location Description: Premier 1 Autocare 1 (South Grate)
Type: Inlet
Latitude: 29.592387
Longitude: -98.473754
Current Maintenance Status: No Maintenance Required



Inspection Date	Inspector Name	Maintenance Type	Notes
12/9/2025	John Sablan		



Stormwater Control Location Information

Location ID: I-019
Location Description: Premier 1 Autocare 2
Type: Inlet
Latitude: 29.591965
Longitude: -98.474525
Current Maintenance Status: Needs Maintenance



Inspection Date	Inspector Name	Maintenance Type	Notes
12/9/2025	John Sablan	Trim Vegetation	



Stormwater Control Location Information

Location ID: I-020
Location Description: New Drash Parking Lot
Type: Inlet
Latitude: 29.591729
Longitude: -98.475521
Current Maintenance Status: No Maintenance Required



Inspection Date	Inspector Name	Maintenance Type	Notes
12/16/2025	John Sablan		



Stormwater Control Location Information

Location ID: I-021
Location Description: Large Channel Drain
Type: Inlet
Latitude: 29.590351
Longitude: -98.477142
Current Maintenance Status: No Maintenance Required



Inspection Date	Inspector Name	Maintenance Type	Notes
-----------------	----------------	------------------	-------

12/12/2025 John Sablan



Stormwater Control Location Information

Location ID: I-022
Location Description: Varco 1
Type: Inlet
Latitude: 29.597591
Longitude: -98.472356
Current Maintenance Status: No Maintenance Required



Inspection Date	Inspector Name	Maintenance Type	Notes
12/9/2025	John Sablan		Replaced medallion



Stormwater Control Location Information

Location ID: I-023
Location Description: Varco 2
Type: Inlet
Latitude: 29.597873
Longitude: -98.473644
Current Maintenance Status: No Maintenance Required



Inspection Date	Inspector Name	Maintenance Type	Notes
12/9/2025	John Sablan		

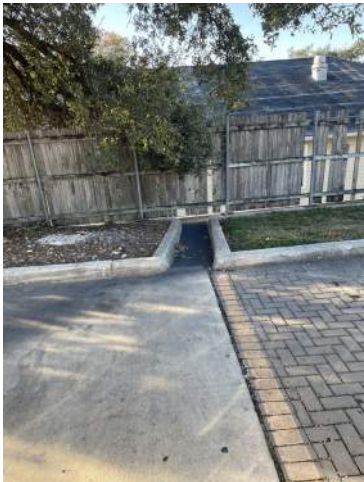
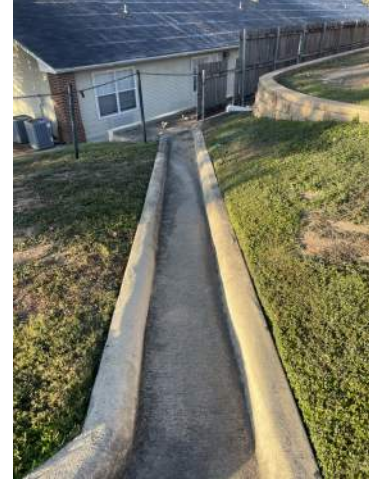


Stormwater Control Location Information

Location ID: I-024
Location Description: Texas Roadhouse
Type: Inlet
Latitude: 29.596238
Longitude: -98.472832
Current Maintenance Status: No Maintenance Required



Inspection Date	Inspector Name	Maintenance Type	Notes
12/9/2025	John Sablan		Clear sediment and vegetation from channel



Stormwater Control Location Information

Location ID: I-025
Location Description: Miner Fleet Parking Lot
Type: Inlet
Latitude: 29.601184
Longitude: -98.473009
Current Maintenance Status: No Maintenance Required



Inspection Date	Inspector Name	Maintenance Type	Notes
12/9/2025	Jones Ard		



Stormwater Control Location Information

Location ID: I-026
Location Description: Parking lot box
Type: Inlet
Latitude: 29.599806
Longitude: -98.471909
Current Maintenance Status: No Maintenance Required



Inspection Date	Inspector Name	Maintenance Type	Notes
12/9/2025	Jones Ard		Monitor stormwater medallion. May need to replace.



Stormwater Control Location Information

Location ID: I-027
Location Description: Amber Creek Drainage Channel (Inlet)
Type: Inlet
Latitude: 29.596066
Longitude: -98.475661
Current Maintenance Status: Needs Maintenance



Inspection Date	Inspector Name	Maintenance Type	Notes
12/9/2025	John Sablan	Remove Leaves/Sediment	



Stormwater Control Location Information

Location ID: I-028
Location Description: Donella Dr 1
Type: Inlet
Latitude: 29.599448
Longitude: -98.476156
Current Maintenance Status: No Maintenance Required



Inspection Date	Inspector Name	Maintenance Type	Notes
12/9/2025	Jones Ard		Monitor stormwater medallion. May need to replace.



Stormwater Control Location Information

Location ID: I-029
Location Description: Drash Rear Parking Lot
Type: Inlet
Latitude: 29.5917
Longitude: -98.476047
Current Maintenance Status: No Maintenance Required



Inspection Date	Inspector Name	Maintenance Type	Notes
12/16/2025	John Sablan		



Stormwater Control Location Information

Location ID: I-030
Location Description: Garrapata Ln
Type: Inlet
Latitude: 29.601931
Longitude: -98.488731
Current Maintenance Status: Needs Maintenance



Inspection Date	Inspector Name	Maintenance Type	Notes
12/9/2025	Jones Ard	Remove Leaves/Sediment	



Stormwater Control Location Information

Location ID: I-031
Location Description: Chula Vista Dr (Arias Lot)
Type: Inlet
Latitude: 29.590508
Longitude: -98.476807
Current Maintenance Status: No Maintenance Required



Inspection Date	Inspector Name	Maintenance Type	Notes
12/9/2025	John Sablan		



Stormwater Control Location Information

Location ID: I-032
Location Description: Miner fleet PCD
Type: Inlet
Latitude: 29.600847
Longitude: -98.47291
Current Maintenance Status: Needs Maintenance



Inspection Date	Inspector Name	Maintenance Type	Notes
12/9/2025	Jones Ard	Trim Vegetation	



Stormwater Control Location Information

Location ID: I-033
Location Description: Oak Creek Ct (Drash Driveway)
Type: Inlet
Latitude: 29.591103
Longitude: -98.475551
Current Maintenance Status: No Maintenance Required



Inspection Date	Inspector Name	Maintenance Type	Notes
-----------------	----------------	------------------	-------

12/9/2025	John Sablan		
-----------	-------------	--	--



Stormwater Control Location Information

Location ID: I-034
Location Description: Stream Gauge
Type: Inlet
Latitude: 29.594943
Longitude: -98.47544
Current Maintenance Status: Needs Maintenance



Inspection Date	Inspector Name	Maintenance Type	Notes
12/10/2025	John Sablan	Remove Leaves/Sediment	Also trim vegetation



Stormwater Control Location Information

Location ID: I-035
Location Description: Premier Autocare Grate
Type: Inlet
Latitude: 29.592145
Longitude: -98.473866
Current Maintenance Status: No Maintenance Required



Inspection Date	Inspector Name	Maintenance Type	Notes
12/9/2025	John Sablan		



Stormwater Control Location Information

Location ID: O-001
Location Description: Voigt Park 4
Type: Outfall
Latitude: 29.599268
Longitude: -98.501333
Current Maintenance Status: Needs Maintenance



Inspection Date	Inspector Name	Maintenance Type	Notes
12/9/2025	Jones Ard	Trim Vegetation	



Stormwater Control Location Information

Location ID: O-002
Location Description: Park Oak
Type: Outfall
Latitude: 29.606363
Longitude: -98.487024
Current Maintenance Status: Needs Maintenance



Inspection Date	Inspector Name	Maintenance Type	Notes
12/9/2025	Jones Ard	Trim Vegetation	Also remove hay bale from channel



Stormwater Control Location Information

Location ID: O-003
Location Description: Northoak Dr
Type: Outfall
Latitude: 29.607314
Longitude: -98.487046
Current Maintenance Status: Needs Maintenance



Inspection Date	Inspector Name	Maintenance Type	Notes
12/10/2025	Jones Ard	Remove Leaves/Sediment	Remove sediment from concrete riprap



Stormwater Control Location Information

Location ID: O-004
Location Description: Rua De Matta St
Type: Outfall
Latitude: 29.600663
Longitude: -98.478591
Current Maintenance Status: No Maintenance Required

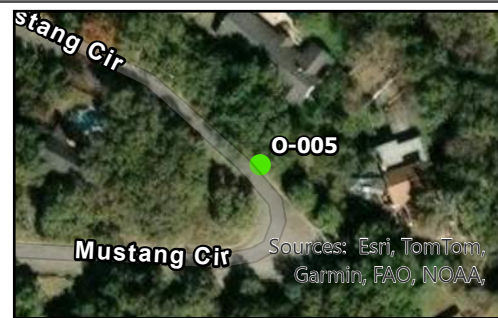


Inspection Date	Inspector Name	Maintenance Type	Notes
12/16/2025	Jones Ard		



Stormwater Control Location Information

Location ID: O-005
Location Description: Mustang Cir
Type: Outfall
Latitude: 29.602145
Longitude: -98.480414
Current Maintenance Status: No Maintenance Required

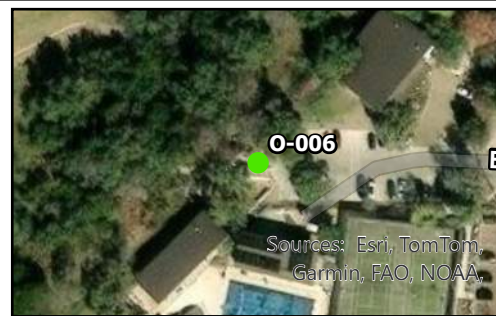


Inspection Date	Inspector Name	Maintenance Type	Notes
12/16/2025	Jones Ard		

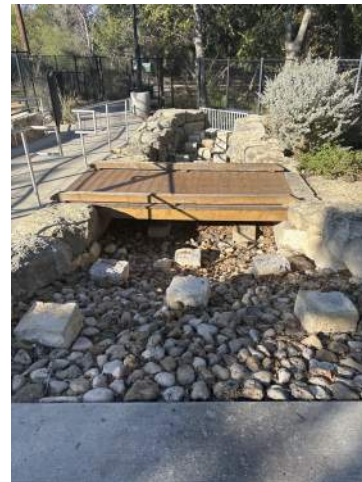


Stormwater Control Location Information

Location ID: O-006
Location Description: Voigt Park 2
Type: Outfall
Latitude: 29.599499
Longitude: -98.500995
Current Maintenance Status: No Maintenance Required

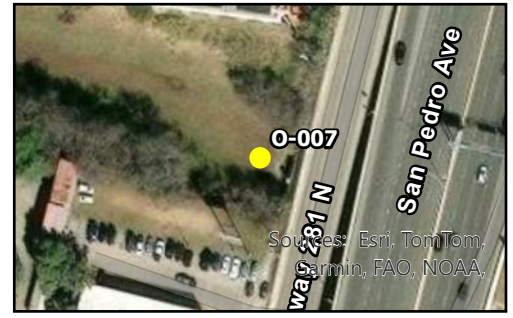


Inspection Date	Inspector Name	Maintenance Type	Notes
12/9/2025	Jones Ard		



Stormwater Control Location Information

Location ID: O-007
Location Description: TXDOT at Lorence Creek
Type: Outfall
Latitude: 29.594381
Longitude: -98.473226
Current Maintenance Status: Needs Maintenance



Inspection Date	Inspector Name	Maintenance Type	Notes
12/9/2025	John Sablan	Remove Trash/Debris	Remove brush blocking 2 southern most box culverts



Stormwater Control Location Information

Location ID: O-008
Location Description: Public Storage
Type: Outfall
Latitude: 29.594819
Longitude: -98.47438
Current Maintenance Status: Needs Maintenance



Inspection Date	Inspector Name	Maintenance Type	Notes
12/9/2025	John Sablan	Trim Vegetation	



Stormwater Control Location Information

Location ID: O-009
Location Description: Mecca Inlets
Type: Outfall
Latitude: 29.594519
Longitude: -98.474119
Current Maintenance Status: No Maintenance Required



Inspection Date	Inspector Name	Maintenance Type	Notes
12/9/2025	John Sablan		Minor vegetation buildup



Stormwater Control Location Information

Location ID: O-010
Location Description: Tall Oak Dr
Type: Outfall
Latitude: 29.602541
Longitude: -98.478854
Current Maintenance Status: No Maintenance Required



Inspection Date	Inspector Name	Maintenance Type	Notes
12/16/2025	Jones Ard		



Stormwater Control Location Information

Location ID: O-011
Location Description: Tiger Tail Rd
Type: Outfall
Latitude: 29.600491
Longitude: -98.477783
Current Maintenance Status: No Maintenance Required



Inspection Date	Inspector Name	Maintenance Type	Notes
12/9/2025	Jones Ard		



Stormwater Control Location Information

Location ID: O-012
Location Description: Paseo Canada St 2
Type: Outfall
Latitude: 29.606516
Longitude: -98.49506
Current Maintenance Status: Needs Maintenance



Inspection Date	Inspector Name	Maintenance Type	Notes
12/9/2025	Jones Ard	Remove Trash/Debris	Remove glass bottle and pieces of paper in channel



Stormwater Control Location Information

Location ID: O-013
Location Description: Fleetwood Dr
Type: Outfall
Latitude: 29.597229
Longitude: -98.490117
Current Maintenance Status: Needs Maintenance

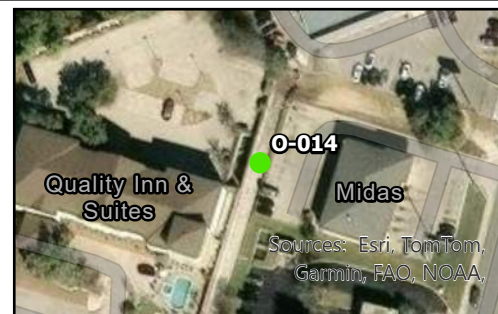


Inspection Date	Inspector Name	Maintenance Type	Notes
12/10/2025	Jones Ard	Remove Leaves/Sediment	Remove from concrete riprap



Stormwater Control Location Information

Location ID: O-014
Location Description: Oak Creek Circle Channel
Type: Outfall
Latitude: 29.591749
Longitude: -98.474606
Current Maintenance Status: No Maintenance Required



Inspection Date	Inspector Name	Maintenance Type	Notes
12/9/2025	John Sablan		



Stormwater Control Location Information

Location ID: O-015
Location Description: Paseo Canada St 1
Type: Outfall
Latitude: 29.607086
Longitude: -98.490131
Current Maintenance Status: Needs Maintenance



Inspection Date	Inspector Name	Maintenance Type	Notes
12/9/2025	Jones Ard	Remove Trash/Debris	Remove pumpkin from channel and rocks blocking culvert outfall



Stormwater Control Location Information

Location ID: O-016
Location Description: Voigt Park 3
Type: Outfall
Latitude: 29.599294
Longitude: -98.501305
Current Maintenance Status: Needs Maintenance

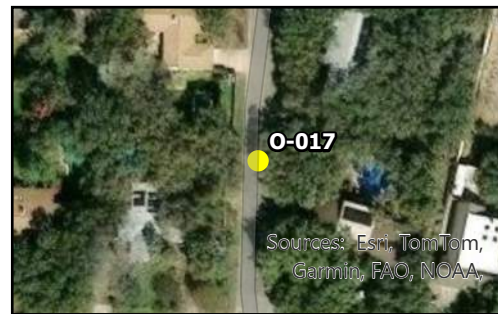


Inspection Date	Inspector Name	Maintenance Type	Notes
12/9/2025	Jones Ard	Trim Vegetation	



Stormwater Control Location Information

Location ID: O-017
Location Description: William Classen Dr
Type: Outfall
Latitude: 29.599871
Longitude: -98.475263
Current Maintenance Status: Needs Maintenance



Inspection Date	Inspector Name	Maintenance Type	Notes
12/9/2025	Jones Ard	Remove Leaves/Sediment	



Stormwater Control Location Information

Location ID: O-018
Location Description: Channel
Type: Outfall
Latitude: 29.590107
Longitude: -98.47753
Current Maintenance Status: No Maintenance Required



Inspection Date	Inspector Name	Maintenance Type	Notes
12/12/2025	John Sablan		



Stormwater Control Location Information

Location ID: O-019
Location Description: Navato Blvd 4
Type: Outfall
Latitude: 29.59016
Longitude: -98.479333
Current Maintenance Status: No Maintenance Required



Inspection Date	Inspector Name	Maintenance Type	Notes
12/9/2025	John Sablan		



Stormwater Control Location Information

Location ID: O-020
Location Description: Navato Blvd 3
Type: Outfall
Latitude: 29.589912
Longitude: -98.47904
Current Maintenance Status: No Maintenance Required



Inspection Date	Inspector Name	Maintenance Type	Notes
12/9/2025	John Sablan		

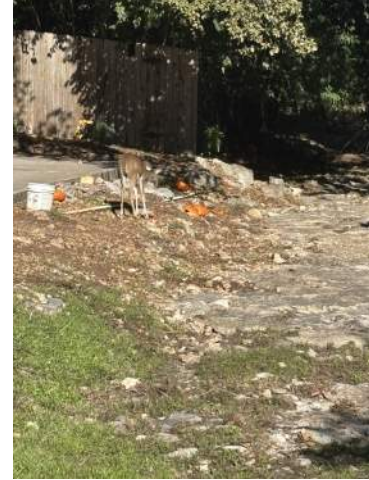


Stormwater Control Location Information

Location ID: O-021
Location Description: Grand Oak St
Type: Outfall
Latitude: 29.605509
Longitude: -98.482092
Current Maintenance Status: Needs Maintenance



Inspection Date	Inspector Name	Maintenance Type	Notes
12/10/2025	Jones Ard	Remove Trash/Debris	Remove pumpkin from channel

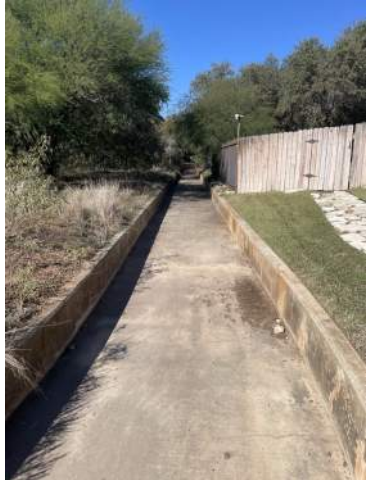


Stormwater Control Location Information

Location ID: 0-022
Location Description: Amber Creek Southern Outfall and Channel
Type: Outfall
Latitude: 29.59141
Longitude: -98.477155
Current Maintenance Status: Needs Maintenance



Inspection Date	Inspector Name	Maintenance Type	Notes
12/9/2025	John Sablan	Remove Leaves/Sediment	



Stormwater Control Location Information

Location ID: O-023
Location Description: Great Wood
Type: Outfall
Latitude: 29.59862
Longitude: -98.478171
Current Maintenance Status: No Maintenance Required



Inspection Date	Inspector Name	Maintenance Type	Notes
12/9/2025	John Sablan		



Stormwater Control Location Information

Location ID: O-024
Location Description: Shady Trails St Rundown
Type: Outfall
Latitude: 29.606344
Longitude: -98.477446
Current Maintenance Status: No Maintenance Required



Inspection Date	Inspector Name	Maintenance Type	Notes
12/16/2025	Jones Ard		



Stormwater Control Location Information

Location ID: O-025
Location Description: Voigt Park Outfall North
Type: Outfall
Latitude: 29.599617
Longitude: -98.500961
Current Maintenance Status: Needs Maintenance



Inspection Date	Inspector Name	Maintenance Type	Notes
12/9/2025	Jones Ard	Remove Trash/Debris	Remove glass bottle and leaves from outfall



Stormwater Control Location Information

Location ID: O-026
Location Description: Rua De Matta St Channel
Type: Outfall
Latitude: 29.600984
Longitude: -98.487902
Current Maintenance Status: Needs Maintenance



Inspection Date	Inspector Name	Maintenance Type	Notes
12/10/2025	Jones Ard	Trim Vegetation	Also remove wood from channel



Stormwater Control Location Information

Location ID: OT-001
Location Description: Retention Pond w/ Infiltration
Type: Other
Latitude: 29.590116
Longitude: -98.477304
Current Maintenance Status: No Maintenance Required



Inspection Date	Inspector Name	Maintenance Type	Notes
12/12/2025	John Sablan		



Stormwater Control Location Information

Location ID: OT-002
Location Description: Spillway Structure Skimmer/Weir
Type: Other
Latitude: 29.596296
Longitude: -98.476181
Current Maintenance Status: No Maintenance Required



Inspection Date	Inspector Name	Maintenance Type	Notes
12/9/2025	John Sablan		



Stormwater Control Location Information

Location ID: OT-003
Location Description: El Cerrito Cir 1 LWC
Type: Other
Latitude: 29.59913
Longitude: -98.48204
Current Maintenance Status: No Maintenance Required



Inspection Date	Inspector Name	Maintenance Type	Notes
12/9/2025	Jones Ard		



Stormwater Control Location Information

Location ID: OT-004
Location Description: Coolway Dr Low Water Crossing
Type: Other
Latitude: 29.591331
Longitude: -98.480204
Current Maintenance Status: No Maintenance Required



Inspection Date	Inspector Name	Maintenance Type	Notes
12/9/2025	John Sablan		



Stormwater Control Location Information

Location ID: OT-005
Location Description: El Cerrito Cir 2 LWC
Type: Other
Latitude: 29.59319
Longitude: -98.484912
Current Maintenance Status: Needs Maintenance



Inspection Date	Inspector Name	Maintenance Type	Notes
12/9/2025	John Sablan	Other	Clean flood gauge



Stormwater Control Location Information

Location ID: OT-006
Location Description: El Cerrito Cir LWC West
Type: Other
Latitude: 29.593676
Longitude: -98.487364
Current Maintenance Status: Needs Maintenance



Inspection Date	Inspector Name	Maintenance Type	Notes
12/9/2025	John Sablan	Other	Clean flood gauge



Stormwater Control Location Information

Location ID: OT-007
Location Description: Antelope Dr Low Water Crossing
Type: Other
Latitude: 29.593664
Longitude: -98.486038
Current Maintenance Status: No Maintenance Required



Inspection Date	Inspector Name	Maintenance Type	Notes
12/9/2025	John Sablan		



Stormwater Control Location Information

Location ID: OT-008
Location Description: Navato Residential Drains
Type: Other
Latitude: 29.589695
Longitude: -98.478718
Current Maintenance Status: No Maintenance Required



Inspection Date	Inspector Name	Maintenance Type	Notes
12/9/2025	John Sablan		



Stormwater Control Location Information

Location ID: OT-009
Location Description: Voigt Dr Leaves
Type: Other
Latitude: 29.600576
Longitude: -98.493055
Current Maintenance Status: Needs Maintenance



Inspection Date	Inspector Name	Maintenance Type	Notes
12/9/2025	Jones Ard	Remove Leaves/Sediment	Remove leaves from the street



Stormwater Control Location Information

Location ID: P-001
Location Description: Yosemite Dr Crossing East
Type: Pipe
Latitude: 29.604268
Longitude: -98.477669
Current Maintenance Status: Needs Maintenance



Inspection Date	Inspector Name	Maintenance Type	Notes
12/9/2025	Jones Ard	Remove Trash/Debris	Remove pumpkin from channel



Stormwater Control Location Information

Location ID: P-002
Location Description: Yosemite Dr Crossing West
Type: Pipe
Latitude: 29.603893
Longitude: -98.482024
Current Maintenance Status: Needs Maintenance



Inspection Date	Inspector Name	Maintenance Type	Notes
12/9/2025	Jones Ard	Remove Trash/Debris	Remove pumpkins from channel



Stormwater Control Location Information

Location ID: P-003
Location Description: Sagecrest Dr Crossing West
Type: Pipe
Latitude: 29.604886
Longitude: -98.482319
Current Maintenance Status: Needs Maintenance



Inspection Date	Inspector Name	Maintenance Type	Notes
12/9/2025	Jones Ard	Remove Trash/Debris	Remove pumpkin from channel and bucket from inside culvert



Stormwater Control Location Information

Location ID: P-004
Location Description: Ridge Trail St Crossing
Type: Pipe
Latitude: 29.607191
Longitude: -98.475999
Current Maintenance Status: No Maintenance Required



Inspection Date	Inspector Name	Maintenance Type	Notes
12/16/2025	Jones Ard		



Stormwater Control Location Information

Location ID: P-005
Location Description: Northoak Dr Crossing
Type: Pipe
Latitude: 29.607261
Longitude: -98.487769
Current Maintenance Status: Needs Maintenance



Inspection Date	Inspector Name	Maintenance Type	Notes
12/9/2025	Jones Ard	Trim Vegetation	



Stormwater Control Location Information

Location ID: P-006
Location Description: Sterling Browning Crossing
Type: Pipe
Latitude: 29.607364
Longitude: -98.489097
Current Maintenance Status: Needs Maintenance



Inspection Date	Inspector Name	Maintenance Type	Notes
12/9/2025	Jones Ard	Remove Leaves/Sediment	Also remove rocks from culvert inlets



Stormwater Control Location Information

Location ID: P-007
Location Description: Donella Dr 2
Type: Pipe
Latitude: 29.599491
Longitude: -98.478822
Current Maintenance Status: Needs Maintenance



Inspection Date	Inspector Name	Maintenance Type	Notes
12/9/2025	Jones Ard	Remove Trash/Debris	Remove pumpkins from channel



Stormwater Control Location Information

Location ID: P-008
Location Description: Northoak Dr Private Crossing West
Type: Pipe
Latitude: 29.607324
Longitude: -98.488624
Current Maintenance Status: Needs Maintenance



Inspection Date	Inspector Name	Maintenance Type	Notes
12/9/2025	Jones Ard	Trim Vegetation	



Stormwater Control Location Information

Location ID: P-009
Location Description: Northoak Dr Private Crossing East
Type: Pipe
Latitude: 29.607383
Longitude: -98.487986
Current Maintenance Status: No Maintenance Required



Inspection Date	Inspector Name	Maintenance Type	Notes
12/16/2025	Jones Ard		



Stormwater Control Location Information

Location ID: P-010
Location Description: Donella Culvert Crossing at Mustang
Type: Pipe
Latitude: 29.599516
Longitude: -98.480642
Current Maintenance Status: Needs Maintenance



Inspection Date	Inspector Name	Maintenance Type	Notes
12/10/2025	Jones Ard	Remove Trash/Debris	Remove pumpkins



Stormwater Control Location Information

Location ID: P-011
Location Description: Antler Cir 2
Type: Pipe
Latitude: 29.591553
Longitude: -98.476992
Current Maintenance Status: No Maintenance Required



Inspection Date	Inspector Name	Maintenance Type	Notes
12/9/2025	John Sablan		



Stormwater Control Location Information

Location ID: P-012
Location Description: Oak Creek Ct
Type: Pipe
Latitude: 29.591205
Longitude: -98.474802
Current Maintenance Status: Needs Maintenance



Inspection Date	Inspector Name	Maintenance Type	Notes
12/10/2025	John Sablan	Remove Trash/Debris	



Stormwater Control Location Information

Location ID: P-013
Location Description: Navato Blvd 1
Type: Pipe
Latitude: 29.589493
Longitude: -98.478226
Current Maintenance Status: No Maintenance Required



Inspection Date	Inspector Name	Maintenance Type	Notes
12/12/2025	John Sablan		



Stormwater Control Location Information

Location ID: P-014
Location Description: Unknown Residential
Type: Pipe
Latitude: 29.599276
Longitude: -98.474509
Current Maintenance Status: No Maintenance Required



Inspection Date	Inspector Name	Maintenance Type	Notes
12/9/2025	Jones Ard		



Stormwater Control Location Information

Location ID: P-015
Location Description: Sagecrest Dr Crossing East
Type: Pipe
Latitude: 29.605273
Longitude: -98.477459
Current Maintenance Status: No Maintenance Required



Inspection Date	Inspector Name	Maintenance Type	Notes
-----------------	----------------	------------------	-------

12/9/2025 Jones Ard



Stormwater Control Location Information

Location ID: P-016
Location Description: Anter Cir 1
Type: Pipe
Latitude: 29.59002
Longitude: -98.478048
Current Maintenance Status: No Maintenance Required



Inspection Date	Inspector Name	Maintenance Type	Notes
12/12/2025	John Sablan		



Construction Location Information

Location ID: C-10
Location Description: Active Construction Yosemite
Type: Construction
Latitude: 29.603732
Longitude: -98.485641
Current Maintenance Status: No Maintenance Required
Current Inspection Date: 12/9/2025 10:41:31.163 PM
Inspector Name: Jones Ard
Maintenance Type:
Notes: Monitor active construction site for stormwater measures



Construction Location Information

Location ID: C-11
Location Description: Spoil Pile Tall Oak Dr
Type: Construction
Latitude: 29.603846
Longitude: -98.480627
Current Maintenance Status: Needs Maintenance
Current Inspection Date: 12/9/2025 11:38:28.780 PM
Inspector Name: Jones Ard
Maintenance Type: Other
Notes: Spoil pile left out after construction. Needs a long term storage solution.



Construction Location Information

Location ID: C-12
Location Description: Active construction
Type: Construction
Latitude: 29.600372
Longitude: -98.476694
Current Maintenance Status: No Maintenance Required
Current Inspection Date: 12/10/2025 12:49:03.123 AM
Inspector Name: Jones Ard
Maintenance Type:
Notes: Monitor active construction for stormwater measures



Construction Location Information

Location ID: C-13
Location Description: Backyard construction
Type: Construction
Latitude: 29.59247
Longitude: -98.480925
Current Maintenance Status: No Maintenance Required
Current Inspection Date: 12/10/2025 1:13:28.274 AM
Inspector Name: John Sablan
Maintenance Type:
Notes:



Construction Location Information

Location ID: C-14
Location Description: House construction
Type: Construction
Latitude: 29.592923
Longitude: -98.481605
Current Maintenance Status: No Maintenance Required
Current Inspection Date: 12/10/2025 1:14:38.766 AM
Inspector Name: John Sablan
Maintenance Type:
Notes:



Construction Location Information

Location ID: C-15
Location Description: New home build
Type: Construction
Latitude: 29.592676
Longitude: -98.482378
Current Maintenance Status: No Maintenance Required
Current Inspection Date: 12/10/2025 1:15:26.162 AM
Inspector Name: John Sablan
Maintenance Type:
Notes:



Construction Location Information

Location ID: C-16
Location Description: Active Construction Alcalde Moreno
Type: Construction
Latitude: 29.605621
Longitude: -98.489701
Current Maintenance Status: No Maintenance Required
Current Inspection Date: 12/10/2025 3:30:54.393 AM
Inspector Name: Jones Ard
Maintenance Type:
Notes: Active construction, monitor stormwater measures



Construction Location Information

Location ID: C-4
Location Description: Orthodontist parking lot
Type: Construction
Latitude: 29.59553
Longitude: -98.473849
Current Maintenance Status: Needs Maintenance
Current Inspection Date: 12/9/2025 8:41:11.071 PM
Inspector Name: Jones Ard
Maintenance Type: Runoff/Sediment Control
Notes: Runoff from Brookdale pushing lots of sediment to BMP in parking lot. Assuming may be broken sprinkler head on Brookdale side.



Construction Location Information

Location ID: C-5
Location Description: Home Build Canada Verde
Type: Construction
Latitude: 29.601246
Longitude: -98.495087
Current Maintenance Status: No Maintenance Required
Current Inspection Date: 12/9/2025 9:11:23.033 PM
Inspector Name: Jones Ard
Maintenance Type:
Notes: Follow up on old construction site. Everything looks good.



Construction Location Information

Location ID: C-6
Location Description: Pool build near Voigt Park
Type: Construction
Latitude: 29.598688
Longitude: -98.500127
Current Maintenance Status: No Maintenance Required
Current Inspection Date: 12/9/2025 9:52:06.792 PM
Inspector Name: Jones Ard
Maintenance Type:
Notes: Follow up inspection on home build. Looks good.



Construction Location Information

Location ID: C-7
Location Description: Home build
Type: Construction
Latitude: 29.597835
Longitude: -98.497115
Current Maintenance Status: No Maintenance Required
Current Inspection Date: 12/9/2025 10:23:48.029 PM
Inspector Name: Jones Ard
Maintenance Type:
Notes: Monitor home build to ensure stormwater practices are in place



Construction Location Information

Location ID: C-8
Location Description: Active Construction Fleetwood
Type: Construction
Latitude: 29.597108
Longitude: -98.489047
Current Maintenance Status: No Maintenance Required
Current Inspection Date: 12/9/2025 10:26:06.614 PM
Inspector Name: Jones Ard
Maintenance Type:
Notes: Monitor active construction site for appropriate stormwater measures



Construction Location Information

Location ID: C-9
Location Description: Construction Casa del Vista
Type: Construction
Latitude: 29.601343
Longitude: -98.483887
Current Maintenance Status: No Maintenance Required
Current Inspection Date: 12/9/2025 10:40:15.221 PM
Inspector Name: Jones Ard
Maintenance Type:
Notes: Follow up inspection of construction site

