

TOWN OF HOLLYWOOD PARK, TX

2025 Summer Inspection





HOLLYWOOD PARK 2025 SUMMER INSPECTION REPORT

To: Frank Jaster, PE
Senior Project Manager
KCI Technologies Inc.
2806 West Bitters Rd, Suite 218
San Antonio, TX 78248

From: Daryl Spillmann
Senior Project Engineer
RESPEC
84 NE Loop 410, Suite 100
San Antonio, TX 78216

Date: July 18, 2025

Subject: Annual Municipal Separate Storm Sewer System (MS4) Inspection

Dear Mr. Jaster,

RESPEC, Inc performed the annual MS4 inspection on behalf of KCI Technologies, Inc (KCI) for the Town of Hollywood Park (Town) in compliance with Texas Commission on Environmental Quality (TCEQ) reporting requirements to investigate and record:

- / Operational status of stormwater features within the Town limit
- / Features requiring maintenance
- / Locations where illicit discharge is occurring and
- / Ensuring overall MS4 meets TCEQ requirements for reporting

Types of features inspected within the MS4 include but are not limited to: streets, storm drain inlets, culverts, basins, ponds, outfalls and LID features.

Drainage inlets were reviewed for storm drain medallions, which inform the public against illicit discharge into the MS4. Existing medallions were reviewed for damage and will be replaced as needed, and medallions will be installed on inlets without markings.

Stormwater features were inspected for trash, debris, excess vegetation, and damage were recorded as requiring maintenance. Drainage of some features was also evaluated and features with poor drainage were also recorded as requiring maintenance.

Sites with apparent construction activities were also recorded.

Illicit discharge, as defined by TCEQ as: "Any discharge to a municipal separate storm sewer that is not entirely composed of stormwater", was also recorded. It is recommended to prioritize resolving and addressing areas with illicit discharge. Further, attached is the EPA "Illicit Discharge Detection and Elimination Program Development" publication which details identification and remediation of Illicit Discharges in MS4 systems.

84 NE LOOP 410, SUITE 100
SAN ANTONIO, TX 78216
210.570.5962
TEXAS REGISTERED FIRM F-17502



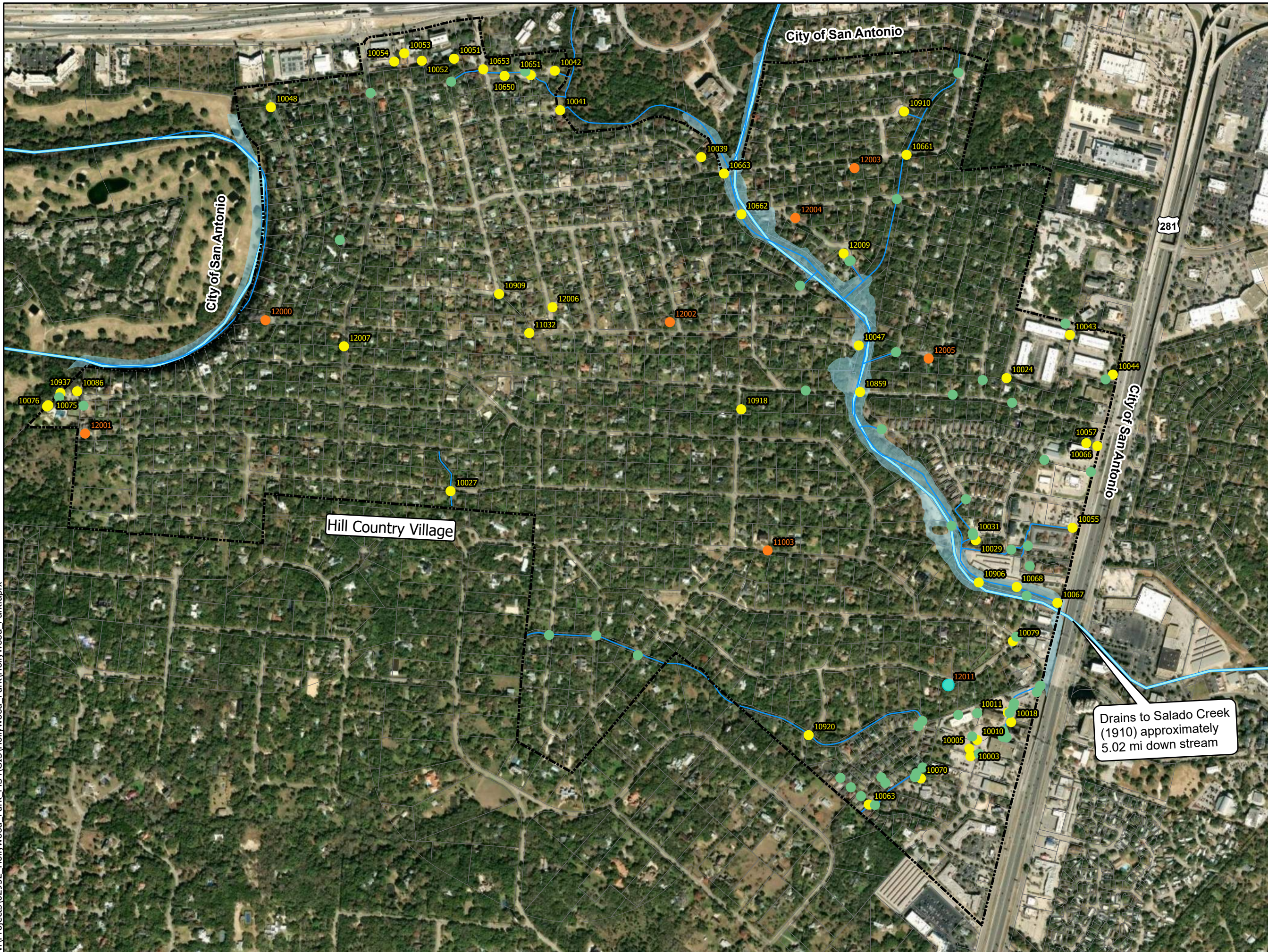
The table below summarizes the documented features inspected in the 2024 report cycle:

Feature Status	Number of Features	Inspection Date	Next Inspection
Illicit Discharge	0	July 2025	Winter 2025
Maintenance Required	48	July 2025	Winter 2025

RESPEC has compiled a report of all 2025 stormwater inspection results containing:

- / Exhibit illustrating feature locations requiring action
- / Spreadsheet listing 2025 inspection records
- / Report outlining inspections, locations, and photos

N:\Projects\02952_Hollywood_Park_MS4\GIS\Hollywood_Park\Hollywood_Park.aprx



Legend

- City Limits
- Drainage Channels
- Streams
- Parcels

Summer_2025

Status

- Illicit Discharge
- Construction Activity
- Needs Maintenance
- No Maintenance Required

TOWN OF HOLLYWOOD PARK 2025 STORM SEWER MAP



N



0 400 800 Feet

 1 inch = 800 ft

Drainage Features with Maintenance Required

Feature ID	Name	Feature	Maintenance
10029	Amber creek PCD	BMP	Mow PCD clear debris from grate inlet.
10031	Amber creek southern outfall and channel	Outfall	Eastern portion needs vegetation cleared out looks good otherwise.
10044	Chandler Signs in north Park Corporate Center Park	BMP	Remove leaves, debris, and vegetation.
10070	Channel	Outfall	Trim vegetation along channel.
10051	Chicago Title PCD	BMP	Bottom of the basin looks pretty dirty. Remove the leaves and sediment from the basin.
10920	Coolway Dr Low Water Crossing	Other	Mow grass.
10054	Corner Store PCD	BMP	Remove trash from grates and pond basin.
10052	CRT Flooring Concepts	BMP	Remove leaves from basin and trim vines off fence.
12006	Dirt In Road	Other	Remove the dirt discharged into the road.
10859	Donella Crossing	Pipe	Remove large limbs from culvert entrances; trim vegetation near culvert entrances.
10918	El Cerrito Cr LWC	Other	Trim overgrown vegetation surrounding Low Water Crossing.
10053	Express Lube PCD	BMP	Remove sediment and trash from inlet. Remove leaves and vegetation from basin.
10027	Fleetwood Crossing	Outfall	Glass on concrete near outfall needs to be cleaned. Sediment and overgrown vegetation near outfall and in channel needs to be removed.
10909	Garrapata storm water inflow	Inlet	Clean debris and vegetation overgrowth in channel.
10039	Grand Oak Outfall	Outfall	Mild vegetation overgrowth; trim.
10011	Holiday Inn PCD	BMP	Clear trash out and lock gate, looks good otherwise.
12007	Leaves In Road	Other	Remove the leaves piled up in the roadway towards the curb.
10024	Marriott Global Reservation PCD	Inlet	Remove leaves from basin.
10079	MEC-I-1	Inlet	Remove sediment and leaves looks good otherwise.
10043	Miner fleet PCD	Inlet	Remove vegetation and mud from basin.
10005	Monarch Trophy PCD	Inlet	Remove sediment.
10063	Navato Blvd Inlet	Inlet	Remove vegetation, monitor spalling.
10651	North Oak Crossing	Pipe	Trim vegetation in channel.
10042	North Oak Outfall	Outfall	Collect and remove loose sediment and trim weeds on the outfall.
10650	North Oak Private Crossing West	Pipe	Trim vegetation and remove trash from west side of pipe.
10010	Oak Creek Circle Inlet	Inlet	Monitor sediment buildup, looks good otherwise.
10041	Park Oak Outfall	Outfall	Lots of vegetation overgrowth and tree debris in channel. Remove vegetation and debris.
10048	Paseo Canada outfall 2	Outfall	Remove tree limbs from channel.
10057	PCD2 Pediatrics	BMP	Remove leaves from basin.
10066	Pediatric Dentistry Office PCD	BMP	Remove trash and leaves from grate. Remove signage, debris, and vegetation from basin interior.
10068	Public Storage Outfall	Outfall	Unable to locate, needs mowing.
10047	Rua De Matta Outfall	Outfall	Trim vegetation at entrance near road; otherwise, looks good.
11032	Rua De Matta Street Channel Outfall	Outfall	Clear vegetation and debris from channel.
10661	Sagecrest Crossing East	Pipe	Trim vegetation near north culvert entrance; otherwise looks good.
10663	Sagecrest Crossing West	Pipe	Trim overgrown vegetation in channel and around the low water crossing marks.
12009	Sediment Buildup At Tall Oak	Other	Remove loose sediment that has collected in the roadway.
10003	Service King Collision Repair Extended Parking PCD	BMP	Remove overgrown vegetation, looks good otherwise.
10910	Shady trails rundown	Outfall	Trim down shrubs in channel, otherwise looks good.
10653	Sterling Browning Crossing	Pipe	Trim vegetation on east side of culvert and remove sediment and debris inside of culvert on west side.
10906	Stream Gauge	Inlet	Remove debris looks good otherwise.
10055	Texas Roadhouse	Inlet	Water draining from Texas Roadhouse, unknown source recent work appears to have been done at pipes discharging water, clear vegetation from channel.
10067	TXDOT at Lorence Creek	Outfall	Remove brush blocking culverts, mow vegetation.
10018	Valvoline PCD	BMP	Monitor sediment, fix gate to restrict unauthorized entry.
10086	Voigt Park Inlet	Inlet	Remove leaves from around grate cover.
10076	Voigt Park Outfall	Outfall	Trim overgrown vegetation and remove trash around outfall.
10937	Voigt Park Outfall North	Outfall	Clear rocks, leaves, and overgrown vegetation from culvert outfall.
10075	Voigt Park Outfall Pipe	Outfall	Trim overgrown vegetation in front of outfall.
10662	Yosemite Crossing West	Pipe	Trim vegetation directly in front of north side inlet, otherwise looks good.

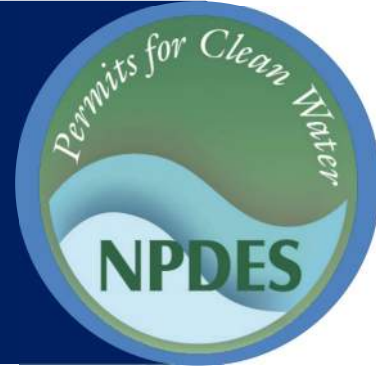
Construction Activity

Feature ID	Feature name/Location	Feature	Construction Activity
12000	Active Construction 1	Other	Active construction on property. Monitor, but no maintenance necessary.
12002	Active Construction 2	Other	Onsite construction. Monitor to ensure dirt and sediment doesn't discharge into the road.
12003	Active Home Build	Other	Active home build. Monitor to ensure stormwater prevention measures are being followed and trash is not placed in the street.
12005	Active Home Build 2	Other	Active home build. Monitor to ensure stormwater measures are in place.
12001	Active Pool Build	Other	Active pool construction. Monitor to ensure construction dirt and materials do not wash offsite.
11003	Sequoia Dr Home Construction	Other	Active construction site, looks good monitor for sediment runoff.
12004	Spoil Pile	Other	Onsite spoil pile. Monitor to ensure there is no discharge into the road.
12011	Sunway Dr. Home Construction	Other	Home construction, monitor for runoff.



Stormwater Best Management Practice

Illicit Discharge Detection and Elimination Program Development



Minimum Measure: Illicit Discharge Detection and Elimination and the Subcategory
Subcategory: Developing an IDDE Program

Description

Illicit discharges generally include any discharge into a municipal separate storm sewer system (MS4) permitted storm drain that does not consist entirely of stormwater. Illicit discharges are a problem because, unlike wastewater that flows to a treatment plant, stormwater generally flows to waterways without any additional treatment. Illicit discharges can contain pathogens, nutrients and various toxic chemicals. Common examples of illicit discharges include concrete or paint washout, waste from restaurants and mechanics, trash, and sewage.

Exceptions are referred to as “allowable discharges,” and each MS4’s permit outlines them. They typically include water from firefighting activities and residential car washes, potable water, and discharges from facilities already under a National Pollutant Discharge Elimination System permit.

Program Development

MS4s need to develop an illicit discharge detection and elimination (IDDE) program, which primarily includes creating:

- Storm sewer system maps
- Ordinances prohibiting illicit discharges
- Inspection and enforcement programs
- Education programs on the hazards associated with illicit discharges
- Plans to detect and address illicit discharges

As the name “IDDE” suggests, detecting and addressing illicit discharges are the main goals of an IDDE program. Illicit discharges have two modes of entry into the MS4: direct or indirect entry. Direct entry means the source connects directly to the MS4 through a pipe or drain-type conveyance. Examples of direct discharges are sanitary sewer cross connections or straight pipes intentionally connected to the MS4. Indirect entry occurs when the source of the illicit discharge flows into the MS4 via



Potential illicit discharge flowing out of a concrete outfall. Confirming an illicit discharge may require sampling or other investigative methods to determine the pollutant and responsible party.

Credit: Photo by Pikrepro

storm drain inlets or infiltration through cracks or joints in the storm sewer network. Indirect entry is far more common than direct entry. Examples of sources of indirect entry include failing septic systems, sanitary sewer overflows, groundwater seepage, spills and dumping, irrigation, and washing activities. The *Illicit Discharge Detection and Elimination* guidance manual (see link below) contains additional information.

Sewage has the greatest potential to produce direct illicit discharges within any urban sub-watershed, regardless of the diverse land uses that the sub-watershed comprises. The most common sewage-related direct discharges are broken sanitary sewer lines, cross connections and straight pipe discharges. There are a variety of techniques to locate and eliminate illegal sewage connections, including tracing sewage flows from the stream or outfall back up the sewer system or conveyances to reach the problem connection. Sewage can also be linked to significant indirect illicit discharges in the form of sanitary sewer overflows, sewage infiltration/inflow and sewage dumping from recreational vehicles.

An effective IDDE program should be proactive to prevent and eliminate illicit discharges through

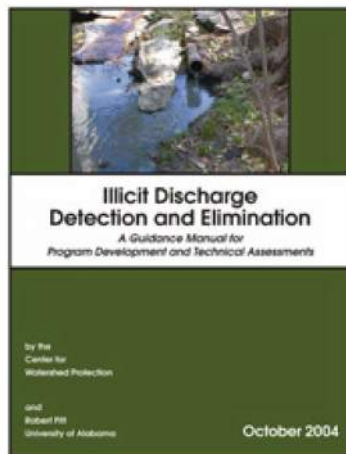
education, training and enforcement. However, the program should also be reactive to address any spills and other illicit discharges to the storm drain system that it detects.

It is also important for MS4s to develop the program to match the needs and concerns of the local community. MS4s typically have flexibility to implement their IDDE programs to address community-specific problems while meeting the specific permit requirements.

EPA developed several documents for MS4s working to develop an IDDE program and to address non-stormwater discharges in their community:

- *Illicit Discharge Detection and Elimination: A Guidance Manual for Program Development and Technical Assessments* is a comprehensive manual outlining practical, low-cost and effective techniques for stormwater program managers and practitioners.

The guidelines include details on creating and managing other aspects of an IDDE program, timelines that estimate how long program implementation will take, information on estimating program costs in terms of capital and personnel expenses, and types of testing to detect stormwater illicit discharges. This manual provides valuable guidance for communities and others seeking to establish IDDE programs.



- EPA's stormwater *Phase II fact sheet on the IDDE minimum control measure* provides examples of illicit discharges and general guidance for developing an IDDE program's framework. This fact sheet provides helpful guidance for new programs and/or staff looking to start an IDDE program.
- EPA's *Trash-Free Waters* Web site and *Aquatic Trash Prevention National Great Practices Compendium* are useful resources for educating the public about impacts and ways to prevent trash from entering waterbodies. The compendium highlights outstanding activities, technologies and programs

that prevent trash from entering the aquatic environment and/or that reduce the overall volume of trash generation.

- EPA produced the *Illegal Dumping Control* fact sheet to give communities a toolkit of effective practices for combating illegal dumping. The fact sheet discusses the importance of not only abatement and enforcement, but also public education and providing bulk trash pickup services.
- EPA developed a fact sheet on controlling *non-stormwater discharges* to the storm drain system. This fact sheet provides information on the potential environmental and public health concerns associated with non-stormwater discharges and means to detect and eliminate any non-stormwater discharges, such as sewage or process water discharges.
- *Community Solutions for Voluntary Long-Term Stormwater Planning* describes how to develop a comprehensive long-term community stormwater plan that integrates stormwater management with a community's broader plans for economic development, infrastructure investment and environmental compliance. Through this approach, communities can prioritize actions related to stormwater management as part of capital improvement plans, integrated plans, master plans or other planning efforts.
- EPA developed an *integrated planning* framework that offers a voluntary opportunity for a municipality to develop an integrated plan to meet multiple Clean Water Act requirements. An integrated plan is a process that identifies efficiencies from separate wastewater and stormwater programs to best prioritize capital investments and achieve our human health and water quality objectives. This approach can also lead to more sustainable and comprehensive solutions, such as green infrastructure, that improve water quality and provide multiple benefits that enhance community vitality.
- EPA provides *illicit discharge ordinances* as examples for local governments. They include language to address general illicit discharges, as well as illicit connections from industrial sites. EPA borrowed the language from a number of ordinances, and communities will need to assess what enforcement methods are appropriate for their areas.

- EPA has developed fact sheets to help communities address cross-contamination of stormwater with wastewater. Wastewater can impact stormwater quality through sanitary sewer overflows, cross connections, and failing or improperly maintained septic systems.

the Keep It Clean Partnership—a coalition of Phase II MS4s in Boulder County, Colorado—which developed [industry-specific fact sheets](#) explaining how local businesses can best manage restaurants, pressure washers, landscapers, carpet cleaners and car washes to protect local waterways.

Other Online Stormwater Resources

There are many successful IDDE programs around the country. Newly developed or established programs looking to expand their capabilities should look to other programs’ successes to continue to build on existing techniques and methods. Examples of municipal IDDE programs include the following:

- [Berkeley County, South Carolina](#), has developed extensive guidance and multiple methods for the public to report illicit discharges, including a phone number, email address and social media accounts.
- [King County, Washington](#), has developed a source-tracing guidance manual that outlines how municipal staff respond to observed and reported illicit discharges.

Many local governments and watershed groups have developed fact sheets for businesses that have high potential to create illicit discharges. One such example is

IDDE Best Management Practice Fact Sheets

EPA has developed the following fact sheets, which describe best management practices and generally provide applicability, implementation and effectiveness information to help municipal stormwater and construction site operators comply with the stormwater Phase II requirements.

Developing an IDDE Program

- Preventing Stormwater Contamination from Sanitary Sewage

Trash and Illegal Dumping

- Developing a Used Oil Recycling Program
- Illegal Dumping Control

Decentralized Wastewater

- Preventing Stormwater Contamination from Septic System Failure

Public Reporting

- Community Hotlines

Additional Information

[Additional information on related practices and the Phase II MS4 program can be found at EPA’s National Menu of Best Management Practices \(BMPs\) for Stormwater website](#)

Disclaimer

This fact sheet is intended to be used for informational purposes only. These examples and references are not intended to be comprehensive and do not preclude the use of other technically sound practices. State or local requirements may apply.

Active Construction 1

Location Details:

Created: 2025-06-26 by Jones Ard
Updated: 2025-06-26 by Jones Ard
Location: 29.601328, -98.495261
Status: Other
Feature Type: Other
Feature Name: Active Construction Site

Inspection Details:

Inspection Date: 2025-06-26
Inspector: Jones Ard
Field Inspection:
 No Maintenance Required
 Needs Maintenance
 Illicit Discharge
 Construction Activity

Field Notes: Active construction on property. Monitor, but no maintenance necessary.

Photos:



Active Construction 2

Location Details:

Created: 2025-06-26 by Jones Ard
Updated: 2025-06-26 by Jones Ard
Location: 29.601275, -98.483975
Status: Other
Feature Type: Other
Feature Name: Active Construction 2

Inspection Details:

Inspection Date: 2025-06-26
Inspector: Jones Ard
Field Inspection:
 No Maintenance Required
 Needs Maintenance
 Illicit Discharge
 Construction Activity

Field Notes: Onsite construction. Monitor to ensure dirt and sediment doesn't discharge into the road.

Photos:



Active Home Build

Location Details:

Created: 2025-06-26 by Jones Ard
Updated: 2025-06-26 by Jones Ard
Location: 29.605048, -98.478759
Status: Other
Feature Type: Other
Feature Name: Active Home Build

Inspection Details:

Inspection Date: 2025-06-26
Inspector: Jones Ard
Field Inspection:
 No Maintenance Required
 Needs Maintenance
 Illicit Discharge
 Construction Activity

Field Notes: Active home build. Monitor to ensure stormwater prevention measures are being followed and trash is not placed in the street.

Photos:



Active Home Build 2

Location Details:

Created: 2025-06-26 by Jones Ard
Updated: 2025-06-26 by Jones Ard
Location: 29.600312, -98.476774
Status: Other
Feature Type: Other
Feature Name: Active Home Build 2

Inspection Details:

Inspection Date: 2025-06-26
Inspector: Jones Ard
Field Inspection:
 No Maintenance Required
 Needs Maintenance
 Illicit Discharge
 Construction Activity

Field Notes: Active home build. Monitor to ensure stormwater measures are in place.

Photos:



Active Pool Build

Location Details:

Created: 2025-06-26 by Jones Ard
Updated: 2025-06-26 by Jones Ard
Location: 29.598851, -98.500147
Status: Other
Feature Type: Other
Feature Name: Active Pool Build

Inspection Details:

Inspection Date: 2025-06-26
Inspector: Jones Ard
Field Inspection:
 No Maintenance Required
 Needs Maintenance
 Illicit Discharge
 Construction Activity

Field Notes: Active pool construction. Monitor to ensure construction dirt and materials do not wash offsite.

Photos:



Amber Creek Drainage Channel

Location Details:

Created: 2019-11-21 by Jamie Taylor
Updated: 2025-06-26 by Jones Ard
Location: 29.5960656004, -98.475661464
Status: Inlet
Feature Type: Inlet
Feature Name: Amber Creek Drainage Channel

Inspection Details:

Inspection Date: 2025-06-26
Inspector: Jones Ard
Field Inspection: No Maintenance Required
 Needs Maintenance
 Illicit Discharge
 Construction Activity

Field Notes: Minor sediment build up, looks good otherwise

Photos:



Amber Creek Inlet

Location Details:

Created: 2019-06-21 by Kevin Hoffman
Updated: 2025-06-26 by John Sablan
Location: 29.5960361556, -98.4755984321
Status: Inlet
Feature Type: Inlet
Feature Name: Amber Creek Inlet

Inspection Details:

Inspection Date: 2025-06-26
Inspector: John Sablan
Field Inspection:

- No Maintenance Required
- Needs Maintenance
- Illicit Discharge
- Construction Activity

Field Notes: Looks good.

Photos:



Amber Creek PCD

Location Details:

Created: 2019-06-21 by Kevin Hoffman
Updated: 2025-06-26 by John Sablan
Location: 29.59587733, -98.47548682
Status: BMP
Feature Type: BMP
Feature Name: Amber Creek PCD

Inspection Details:

Inspection Date: 2025-06-26
Inspector: John Sablan
Field Inspection:
 No Maintenance Required
 Needs Maintenance
 Illicit Discharge
 Construction Activity

Field Notes: Mow PCD clear debris from grate inlet.

Photos:





Amber Creek Southern Outfall and Channel

Location Details:

Created: 2019-11-21 by Jamie Taylor
Updated: 2025-06-26 by John Sablan
Location: 29.5955880694, -98.4746750817
Status: Outfall
Feature Type: Outfall
Feature Name: Amber Creek Southern Outfall and Channel

Inspection Details:

Inspection Date: 2025-06-26
Inspector: John Sablan
Field Inspection:
 No Maintenance Required
 Needs Maintenance
 Illicit Discharge
 Construction Activity

Field Notes: Eastern portion needs vegetation cleared out looks good otherwise.

Photos:



Antelope Dr Low Water Crossing

Location Details:

Created: 2022-07-21 by Hayden Dallmeyer
Updated: 2025-06-26 by John Sablan
Location: 29.5936637046, -98.4860383441
Status: Other
Feature Type: Other
Feature Name: Antelope Dr Low Water Crossing

Inspection Details:

Inspection Date: 2025-06-26
Inspector: John Sablan
Field Inspection:
 No Maintenance Required
 Needs Maintenance
 Illicit Discharge
 Construction Activity

Field Notes: Looks good.

Photos:



ANT-I-1

Location Details:

Created: 2019-06-21 by Kevin Hoffman
Updated: 2025-06-26 by John Sablan
Location: 29.59014578, -98.47814567
Status: Inlet
Feature Type: Inlet
Feature Name: ANT-I-1

Inspection Details:

Inspection Date: 2025-06-26
Inspector: John Sablan
Field Inspection:
 No Maintenance Required
 Needs Maintenance
 Illicit Discharge
 Construction Activity

Field Notes: Looks good.

Photos:



ANT-I-2

Location Details:

Created: 2019-06-21 by Kevin Hoffman
Updated: 2025-06-26 by John Sablan
Location: 29.5914097227, -98.4771547839
Status: Inlet
Feature Type: Inlet
Feature Name: ANT-I-2

Inspection Details:

Inspection Date: 2025-06-26
Inspector: John Sablan
Field Inspection:

- No Maintenance Required
- Needs Maintenance
- Illicit Discharge
- Construction Activity

Field Notes: Looks good.

Photos:



Antler 1 Storm Sewer Pipe

Location Details:

Created: 2019-06-21 by Kevin Hoffman
Updated: 2025-06-26 by John Sablan
Location: 29.59002023, -98.47804778
Status: Pipe
Feature Type: Pipe
Feature Name: Antler 1 Storm Sewer Pipe

Inspection Details:

Inspection Date: 2025-06-26
Inspector: John Sablan
Field Inspection:
 No Maintenance Required
 Needs Maintenance
 Illicit Discharge
 Construction Activity

Field Notes: Looks good.

Photos:



Antler 2 Storm Sewer Pipe

Location Details:

Created: 2019-06-21 by Kevin Hoffman
Updated: 2025-06-26 by John Sablan
Location: 29.5915531631, -98.4769918397
Status: Pipe
Feature Type: Pipe
Feature Name: Antler 2 Storm Sewer Pipe

Inspection Details:

Inspection Date: 2025-06-26
Inspector: John Sablan
Field Inspection:
 No Maintenance Required
 Needs Maintenance
 Illicit Discharge
 Construction Activity

Field Notes: Looks good.

Photos:



Brookdale PCD

Location Details:

Created: 2019-06-21 by Kevin Hoffman
Updated: 2025-06-26 by John Sablan
Location: 29.59569442, -98.47411282
Status: BMP
Feature Type: BMP
Feature Name: Brookdale PCD

Inspection Details:

Inspection Date: 2025-06-26
Inspector: John Sablan
Field Inspection:

- No Maintenance Required
- Needs Maintenance
- Illicit Discharge
- Construction Activity

Field Notes: Looks good, fence has been repaired since last inspection.

Photos:





Cascade Glen Sidewalk Drain

Location Details:

Created: 2019-06-21 by Kevin Hoffman
Updated: 2025-06-26 by John Sablan
Location: 29.59689996, -98.47587503
Status: Inlet
Feature Type: Inlet
Feature Name: Cascade Glen Sidewalk Drain

Inspection Details:

Inspection Date: 2025-06-26
Inspector: John Sablan
Field Inspection:
 No Maintenance Required
 Needs Maintenance
 Illicit Discharge
 Construction Activity

Field Notes: Looks good.

Photos:



Chandler Signs PCD in North Park Corporate Center Parking Lot

Location Details:

Created: 2019-11-21 by Jamie Taylor
Updated: 2025-06-26 by Jones Ard
Location: 29.5999542743, -98.4717233106
Status: BMP
Feature Type: BMP
Feature Name: Chandler signs PCD in north park corporate center parking lot.

Inspection Details:

Inspection Date: 2025-06-26
Inspector: Jones Ard
Field Inspection:
 No Maintenance Required
 Needs Maintenance
 Illicit Discharge
 Construction Activity

Field Notes: Remove leaves, debris, and vegetation.

Photos:



Channel

Location Details:

Created: 2019-06-26 by Jamie Taylor
Updated: 2025-06-26 by John Sablan
Location: 29.5901068, -98.47752962
Status: Outfall
Feature Type: Outfall
Feature Name: Channel

Inspection Details:

Inspection Date: 2025-06-26
Inspector: John Sablan
Field Inspection:

- No Maintenance Required
- Needs Maintenance
- Illicit Discharge
- Construction Activity

Field Notes: Trim vegetation along channel.

Photos:



Chicago Title PCD

Location Details:

Created: 2019-06-21 by Kevin Hoffman
Updated: 2025-06-26 by Jones Ard
Location: 29.60764467, -98.48988306
Status: BMP
Feature Type: BMP
Feature Name: Chicago Title PCD

Inspection Details:

Inspection Date: 2025-06-26
Inspector: Jones Ard
Field Inspection:
 No Maintenance Required
 Needs Maintenance
 Illicit Discharge
 Construction Activity

Field Notes: Bottom of the basin looks pretty dirty. Remove the leaves and sediment from the basin.

Photos:



Coolway Dr Low Water Crossing

Location Details:

Created: 2022-07-21 by Hayden Dallmeyer
Updated: 2025-07-11 by John Sablan
Location: 29.591331272413573, -98.48020395273201
Status: Other
Feature Type: Other
Feature Name: Coolway Dr Low Water Crossing

Inspection Details:

Inspection Date: 2025-07-11
Inspector: John Sablan
Field Inspection:
 No Maintenance Required
 Needs Maintenance
 Illicit Discharge
 Construction Activity

Field Notes: Mow grass.

Photos:



Corner Store PCD

Location Details:

Created: 2019-06-21 by Kevin Hoffman
Updated: 2025-06-26 by Jones Ard
Location: 29.60757784, -98.49162439
Status: BMP
Feature Type: BMP
Feature Name: Corner Store PCD

Inspection Details:

Inspection Date: 2025-06-26
Inspector: Jones Ard
Field Inspection:
 No Maintenance Required
 Needs Maintenance
 Illicit Discharge
 Construction Activity

Field Notes: Remove trash from grates and pond basin.

Photos:





CRT Flooring Concepts PCD

Location Details:

Created: 2019-06-21 by Kevin Hoffman
Updated: 2025-06-26 by Jones Ard
Location: 29.60761884, -98.49090215
Status: BMP
Feature Type: BMP
Feature Name: CRT Flooring Concepts PCD

Inspection Details:

Inspection Date: 2025-06-26
Inspector: Jones Ard
Field Inspection: No Maintenance Required
 Needs Maintenance
 Illicit Discharge
 Construction Activity

Field Notes: Remove leaves from basin and trim vines off fence.

Photos:





Curb Outlet, 1

Location Details:

Created: 2019-11-20 by Jamie Taylor
Updated: 2025-06-26 by John Sablan
Location: 29.5901603, -98.4793329
Status: Outfall
Feature Type: Outfall
Feature Name: Curb Outlet, 1

Inspection Details:

Inspection Date: 2025-06-26
Inspector: John Sablan
Field Inspection:
 No Maintenance Required
 Needs Maintenance
 Illicit Discharge
 Construction Activity

Field Notes: Looks good.

Photos:



Dirt in Road

Location Details:

Created: 2025-06-26 by Jones Ard
Updated: 2025-06-26 by Jones Ard
Location: 29.601629, -98.487331
Status: Other
Feature Type: Other
Feature Name: Dirt in Road

Inspection Details:

Inspection Date: 2025-06-26
Inspector: Jones Ard
Field Inspection:
 No Maintenance Required
 Needs Maintenance
 Illicit Discharge
 Construction Activity

Field Notes: Remove the dirt discharged into the road.

Photos:



Donella Crossing

Location Details:

Created: 2019-06-21 by Kevin Hoffman
Updated: 2025-06-26 by Jones Ard
Location: 29.59949134, -98.47882171
Status: Pipe
Feature Type: Pipe
Feature Name: Donella Crossing

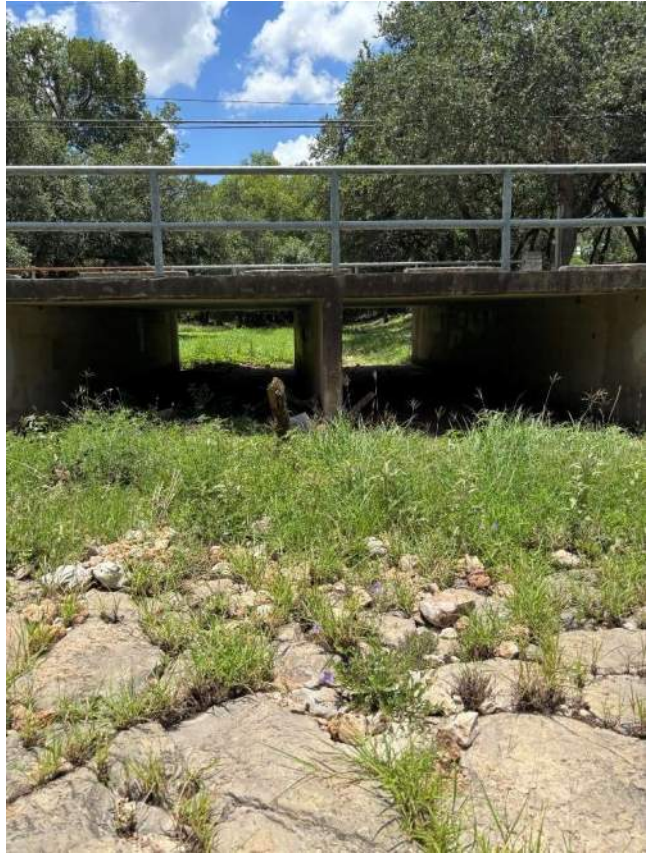
Inspection Details:

Inspection Date: 2025-06-26
Inspector: Jones Ard
Field Inspection:
 No Maintenance Required
 Needs Maintenance
 Illicit Discharge
 Construction Activity

Field Notes: Remove large limbs from culvert entrances; trim vegetation near culvert entrances.

Photos:





Donella Culvert Crossing at Mustang Circle

Location Details:

Created: 2019-06-21 by Kevin Hoffman
Updated: 2025-06-26 by Jones Ard
Location: 29.59951553, -98.48064199
Status: Pipe
Feature Type: Pipe
Feature Name: Donella Culvert Crossing at Mustang Circle

Inspection Details:

Inspection Date: 2025-06-26
Inspector: Jones Ard
Field Inspection:
 No Maintenance Required
 Needs Maintenance
 Illicit Discharge
 Construction Activity

Field Notes: Looks good.

Photos:





Donella Inlet Box

Location Details:

Created: 2019-11-21 by Jamie Taylor
Updated: 2025-06-26 by John Sablan
Location: 29.599447901, -98.4761559963
Status: Inlet
Feature Type: Inlet
Feature Name: Donella Inlet Box

Inspection Details:

Inspection Date: 2025-06-26
Inspector: John Sablan
Field Inspection:
 No Maintenance Required
 Needs Maintenance
 Illicit Discharge
 Construction Activity

Field Notes: Minor amount of rocks and sediment in box, looks good otherwise.

Photos:



Drash Rear Parking Lot Inlet

Location Details:

Created: 2019-11-21 by Jamie Taylor
Updated: 2025-06-26 by John Sablan
Location: 29.5917003934, -98.4760473669
Status: Inlet
Feature Type: Inlet
Feature Name: Drash Rear Parking Lot Inlet

Inspection Details:

Inspection Date: 2025-06-26
Inspector: John Sablan
Field Inspection:
 No Maintenance Required
 Needs Maintenance
 Illicit Discharge
 Construction Activity

Field Notes: Looks good.

Photos:



El Cerrito Cr Low Water Crossing

Location Details:

Created: 2022-07-21 by Hayden Dallmeyer
Updated: 2025-06-26 by Jones Ard
Location: 29.59912971130535, -98.48204034389786
Status: Other
Feature Type: Other
Feature Name: El Cerrito Cr Low Water Crossing

Inspection Details:

Inspection Date: 2025-06-26
Inspector: Jones Ard
Field Inspection:
 No Maintenance Required
 Needs Maintenance
 Illicit Discharge
 Construction Activity

Field Notes: Trim overgrown vegetation surrounding Low Water Crossing.

Photos:



El Cerrito Low Water Crossing

Location Details:

Created: 2022-07-21 by Hayden Dallmeyer
Updated: 2025-06-26 by John Sablan
Location: 29.593118713264904, -98.48491206774347
Status: Other
Feature Type: Other
Feature Name: El Cerrito Low Water Crossing

Inspection Details:

Inspection Date: 2025-06-26
Inspector: John Sablan
Field Inspection:
 No Maintenance Required
 Needs Maintenance
 Illicit Discharge
 Construction Activity

Field Notes: Looks good may need to repaint depth marker soon

Photos:



El Cerrito Low Water Crossing West

Location Details:

Created: 2022-07-21 by Hayden Dallmeyer
Updated: 2025-06-26 by John Sablan
Location: 29.5936764949, -98.4873635178
Status: Other
Feature Type: Other
Feature Name: El Cerrito Low Water Crossing West

Inspection Details:

Inspection Date: 2025-06-26
Inspector: John Sablan
Field Inspection:
 No Maintenance Required
 Needs Maintenance
 Illicit Discharge
 Construction Activity

Field Notes: Looks good.

Photos:



Express Lube PCD

Location Details:

Created: 2019-06-21 by Kevin Hoffman
Updated: 2025-06-26 by Jones Ard
Location: 29.6078122089, -98.4913406521
Status: BMP
Feature Type: BMP
Feature Name: Express Lube PCD

Inspection Details:

Inspection Date: 2025-06-26
Inspector: Jones Ard
Field Inspection:
 No Maintenance Required
 Needs Maintenance
 Illicit Discharge
 Construction Activity

Field Notes: Remove sediment and trash from inlet. Remove leaves and vegetation from basin.

Photos:





Fleetwood Crossing

Location Details:

Created: 2019-06-21 by Kevin Hoffman
Updated: 2025-06-26 by Jones Ard
Location: 29.59722952, -98.4901188
Status: Pipe
Feature Type: Pipe
Feature Name: Fleetwood Crossing

Inspection Details:

Inspection Date: 2025-06-26
Inspector: Jones Ard
Field Inspection:
 No Maintenance Required
 Needs Maintenance
 Illicit Discharge
 Construction Activity

Field Notes: Glass on concrete near outfall needs to be cleaned.
Sediment and overgrown vegetation near outfall and in channel needs to be removed.

Photos:







Garrapata Storm Water Inflow

Location Details:

Created: 2020-07-29 by Kevin Hunt
Updated: 2025-06-26 by Jones Ard
Location: 29.6019308, -98.4887309
Status: Inlet
Feature Type: Inlet
Feature Name: Garrapata storm water inflow

Inspection Details:

Inspection Date: 2025-06-26
Inspector: Jones Ard
Field Inspection:
 No Maintenance Required
 Needs Maintenance
 Illicit Discharge
 Construction Activity

Field Notes: Clean debris and vegetation overgrowth in channel

Photos:



Grand Oak Outfall

Location Details:

Created: 2019-06-26 by Jamie Taylor
Updated: 2025-06-26 by Jones Ard
Location: 29.60550876, -98.48620925
Status: Outfall
Feature Type: Outfall
Feature Name: Grand Oak Outfall

Inspection Details:

Inspection Date: 2025-06-26
Inspector: Jones Ard
Field Inspection:
 No Maintenance Required
 Needs Maintenance
 Illicit Discharge
 Construction Activity

Field Notes: Mild vegetation overgrowth; trim.

Photos:



Great Wood Street Outfall

Location Details:

Created: 2019-11-21 by Jamie Taylor
Updated: 2025-06-26 by John Sablan
Location: 29.5986196822, -98.4781706706
Status: Outfall
Feature Type: Outfall
Feature Name: Great wood street outfall

Inspection Details:

Inspection Date: 2025-06-26
Inspector: John Sablan
Field Inspection:
 No Maintenance Required
 Needs Maintenance
 Illicit Discharge
 Construction Activity

Field Notes: Looks good.

Photos:



Holiday Inn PCD

Location Details:

Created: 2019-06-21 by Kevin Hoffman
Updated: 2025-06-26 by John Sablan
Location: 29.59173103, -98.47466033
Status: BMP
Feature Type: BMP
Feature Name: Holiday Inn PCD

Inspection Details:

Inspection Date: 2025-06-26
Inspector: John Sablan
Field Inspection:
 No Maintenance Required
 Needs Maintenance
 Illicit Discharge
 Construction Activity

Field Notes: Clear trash out and lock gate, looks good otherwise

Photos:



Large Channel Drain Inlet

Location Details:

Created: 2019-06-26 by Jamie Taylor
Updated: 2025-06-26 by Jones Ard
Location: 29.59035111, -98.47714238
Status: Inlet
Feature Type: Inlet
Feature Name: Large channel drain inlet

Inspection Details:

Inspection Date: 2025-06-26
Inspector: Jones Ard
Field Inspection:
 No Maintenance Required
 Needs Maintenance
 Illicit Discharge
 Construction Activity

Field Notes: Looks good, adjacent BMP draining clear water

Photos:



Leaves in Road

Location Details:

Created: 2025-06-26 by Jones Ard
Updated: 2025-06-26 by Jones Ard
Location: 29.600698, -98.493044
Status: Other
Feature Type: Other
Feature Name: Active Home Build

Inspection Details:

Inspection Date: 2025-06-26
Inspector: Jones Ard
Field Inspection:
 No Maintenance Required
 Needs Maintenance
 Illicit Discharge
 Construction Activity

Field Notes: Remove the leaves piled up in the roadway towards the curb.

Photos:



Marriott Global Reservation PCD

Location Details:

Created: 2019-06-21 by Kevin Hoffman
Updated: 2025-06-26 by John Sablan
Location: 29.59983037, -98.4746156
Status: BMP
Feature Type: BMP
Feature Name: Marriott Global Reservation PCD

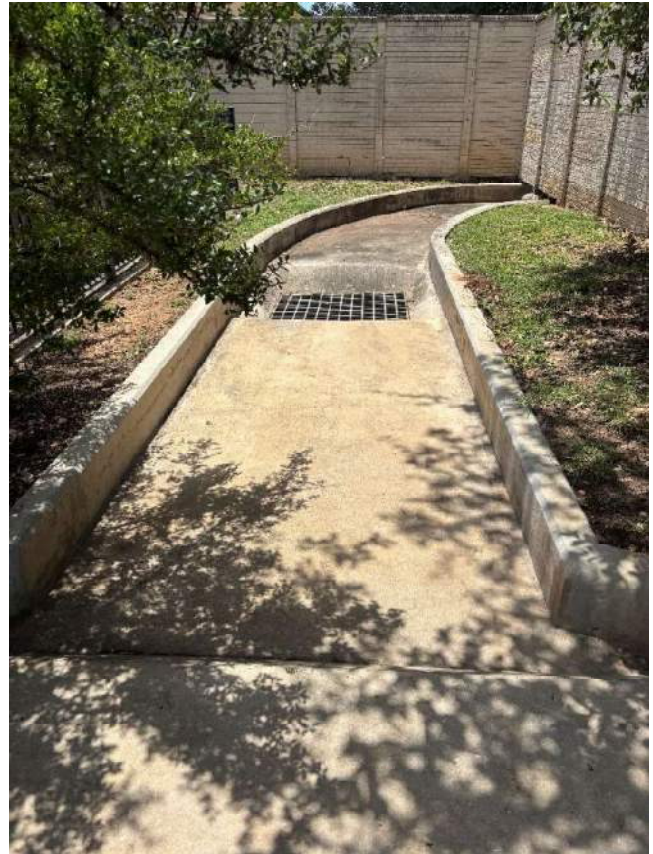
Inspection Details:

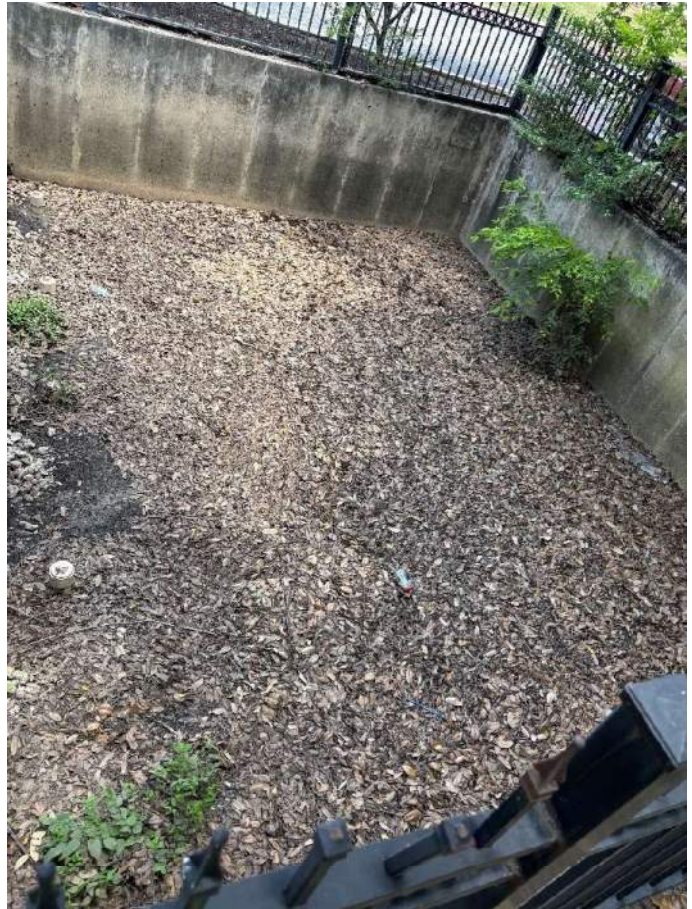
Inspection Date: 2025-06-26
Inspector: John Sablan
Field Inspection:

- No Maintenance Required
- Needs Maintenance
- Illicit Discharge
- Construction Activity

Field Notes: Remove leaves from basin.

Photos:





Mecca Inlets Outfall

Location Details:

Created: 2019-06-21 by Kevin Hoffman
Updated: 2025-06-26 by John Sablan
Location: 29.5945187183, -98.4741185233
Status: Outfall
Feature Type: Outfall
Feature Name: Mecca Inlets Outfall

Inspection Details:

Inspection Date: 2025-06-26
Inspector: John Sablan
Field Inspection:
 No Maintenance Required
 Needs Maintenance
 Illicit Discharge
 Construction Activity

Field Notes: Looks good.

Photos:



MEC-I-1(M)

Location Details:

Created: 2019-06-21 by Kevin Hoffman
Updated: 2025-06-26 by John Sablan
Location: 29.5934700553, -98.4745111316
Status: Inlet
Feature Type: Inlet
Feature Name: MEC-I-1(M)

Inspection Details:

Inspection Date: 2025-06-26
Inspector: John Sablan
Field Inspection:
 No Maintenance Required
 Needs Maintenance
 Illicit Discharge
 Construction Activity

Field Notes: Remove sediment and leaves looks good otherwise.

Photos:



MEC-I-2(M)

Location Details:

Created: 2019-06-21 by Kevin Hoffman
Updated: 2025-06-26 by Jones Ard
Location: 29.5935697618, -98.4744330123
Status: Inlet
Feature Type: Inlet
Feature Name: MEC-I-2(M)

Inspection Details:

Inspection Date: 2025-06-26
Inspector: Jones Ard
Field Inspection:

- No Maintenance Required
- Needs Maintenance
- Illicit Discharge
- Construction Activity

Field Notes: Looks good.

Photos:



Midas Inlet in Rear

Location Details:

Created: 2019-06-26 by Jamie Taylor
Updated: 2025-06-26 by John Sablan
Location: 29.5918767779, -98.4745195135
Status: Inlet
Feature Type: Inlet
Feature Name: Midas Inlet in rear

Inspection Details:

Inspection Date: 2025-06-26
Inspector: John Sablan
Field Inspection:
 No Maintenance Required
 Needs Maintenance
 Illicit Discharge
 Construction Activity

Field Notes: Looks good.

Photos:



Miner Fleet Parking Lot Inlet

Location Details:

Created: 2019-11-21 by Jamie Taylor
Updated: 2025-06-26 by John Sablan
Location: 29.601184194, -98.4730094299
Status: Inlet
Feature Type: Inlet
Feature Name: Miner fleet parking lot inlet

Inspection Details:

Inspection Date: 2025-06-26
Inspector: John Sablan
Field Inspection:

- No Maintenance Required
- Needs Maintenance
- Illicit Discharge
- Construction Activity

Field Notes: Looks good.

Photos:



Miner Fleet PCD

Location Details:

Created: 2019-06-21 by Kevin Hoffman
Updated: 2025-06-26 by Jones Ard
Location: 29.60084652, -98.47290999
Status: BMP
Feature Type: BMP
Feature Name: Miner Fleet PCD

Inspection Details:

Inspection Date: 2025-06-26
Inspector: Jones Ard
Field Inspection:
 No Maintenance Required
 Needs Maintenance
 Illicit Discharge
 Construction Activity

Field Notes: Remove vegetation and mud from basin.

Photos:



Monarch Trophy PCD

Location Details:

Created: 2019-06-21 by Kevin Hoffman
Updated: 2025-06-26 by John Sablan
Location: 29.59079715, -98.47576035
Status: BMP
Feature Type: BMP
Feature Name: Monarch Trophy PCD

Inspection Details:

Inspection Date: 2025-06-26
Inspector: John Sablan
Field Inspection:
 No Maintenance Required
 Needs Maintenance
 Illicit Discharge
 Construction Activity

Field Notes: Remove sediment.

Photos:



Monarch Trophy Swale

Location Details:

Created: 2019-06-21 by Kevin Hoffman
Updated: 2025-06-26 by John Sablan
Location: 29.59109369, -98.474776
Status: BMP
Feature Type: BMP
Feature Name: Monarch Trophy Swale

Inspection Details:

Inspection Date: 2025-06-26
Inspector: John Sablan
Field Inspection:

- No Maintenance Required
- Needs Maintenance
- Illicit Discharge
- Construction Activity

Field Notes: Looks good.

Photos:





Mustang Circle

Location Details:

Created: 2019-06-21 by Kevin Hoffman
Updated: 2025-06-26 by Jones Ard
Location: 29.60214474, -98.480414
Status: Outfall
Feature Type: Outfall
Feature Name: Mustang Circle

Inspection Details:

Inspection Date: 2025-06-26
Inspector: Jones Ard
Field Inspection:

- No Maintenance Required
- Needs Maintenance
- Illicit Discharge
- Construction Activity

Field Notes: Mild debris noted, but looks fine.

Photos:



Navato Residential Drains

Location Details:

Created: 2025-06-26 by John Sablan
Updated: 2025-06-26 by John Sablan
Location: 29.58969461553607, -98.47871779821696
Status: Other
Feature Type: Other
Feature Name: Navata Residential Drains

Inspection Details:

Inspection Date: 2025-06-26
Inspector: John Sablan
Field Inspection:
 No Maintenance Required
 Needs Maintenance
 Illicit Discharge
 Construction Activity

Field Notes: Looks good.

Photos:



Navato Blvd Inlet

Location Details:

Created: 2019-07-09 by Jamie Taylor
Updated: 2025-06-26 by John Sablan
Location: 29.58950941, -98.47854048
Status: Inlet
Feature Type: Inlet
Feature Name: Navato Blvd Inlet

Inspection Details:

Inspection Date: 2025-06-26
Inspector: John Sablan
Field Inspection:

- No Maintenance Required
- Needs Maintenance
- Illicit Discharge
- Construction Activity

Field Notes: Remove vegetation, monitor spalling.

Photos:



Navato Storm Sewer Pipe

Location Details:

Created: 2019-06-21 by Kevin Hoffman
Updated: 2025-06-26 by John Sablan
Location: 29.58949309, -98.4784226
Status: Pipe
Feature Type: Pipe
Feature Name: Navato Storm Sewer Pipe

Inspection Details:

Inspection Date: 2025-06-26
Inspector: John Sablan
Field Inspection:

- No Maintenance Required
- Needs Maintenance
- Illicit Discharge
- Construction Activity

Field Notes: Looks good, monitor spalling.

Photos:





New Drash Parking Lot Inlet

Location Details:

Created: 2019-07-09 by Jamie Taylor
Updated: 2025-06-26 by John Sablan
Location: 29.5917225, -98.4755098
Status: Inlet
Feature Type: Inlet
Feature Name: New Drash Parking Lot Inlet

Inspection Details:

Inspection Date: 2025-06-26
Inspector: John Sablan
Field Inspection: No Maintenance Required
 Needs Maintenance
 Illicit Discharge
 Construction Activity

Field Notes: Looks good.

Photos:



North Oak Crossing

Location Details:

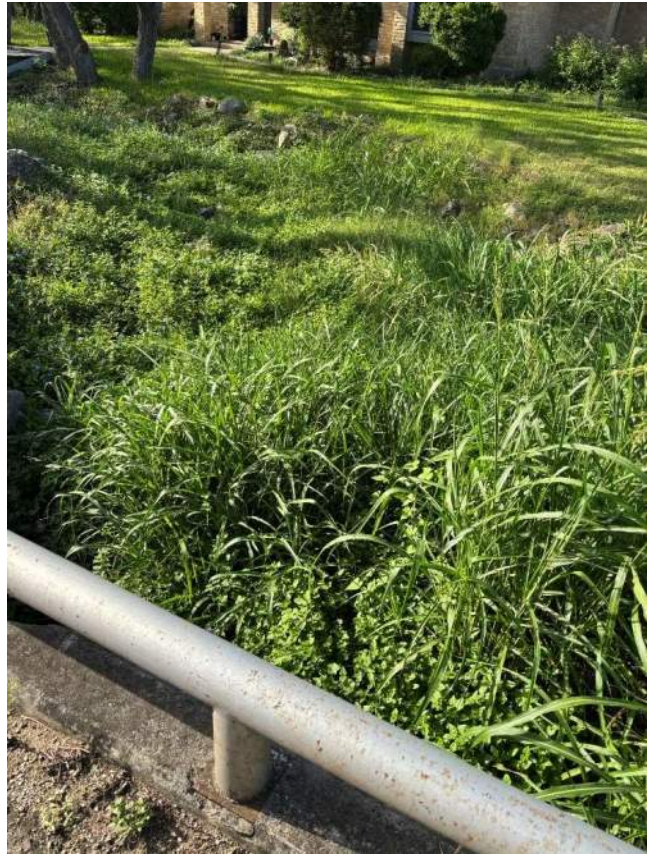
Created: 2019-06-21 by Kevin Hoffman
Updated: 2025-06-26 by Jones Ard
Location: 29.60726051, -98.48776927
Status: Pipe
Feature Type: Pipe
Feature Name: North Oak Crossing

Inspection Details:

Inspection Date: 2025-06-26
Inspector: Jones Ard
Field Inspection:
 No Maintenance Required
 Needs Maintenance
 Illicit Discharge
 Construction Activity

Field Notes: Trim vegetation in channel.

Photos:



North Oak Outfall

Location Details:

Created: 2019-06-21 by Kevin Hoffman
Updated: 2025-06-26 by Jones Ard
Location: 29.60731404, -98.48704576
Status: Outfall
Feature Type: Outfall
Feature Name: North Oak Outfall

Inspection Details:

Inspection Date: 2025-06-26
Inspector: Jones Ard
Field Inspection:

- No Maintenance Required
- Needs Maintenance
- Illicit Discharge
- Construction Activity

Field Notes: Collect and remove loose sediment and trim weeds on the outfall.

Photos:



North Oak Private Crossing East

Location Details:

Created: 2019-06-21 by Kevin Hoffman
Updated: 2025-06-26 by Jones Ard
Location: 29.6073825395, -98.4879858792
Status: Pipe
Feature Type: Pipe
Feature Name: North Oak Private Crossing East

Inspection Details:

Inspection Date: 2025-06-26
Inspector: Jones Ard
Field Inspection:
 No Maintenance Required
 Needs Maintenance
 Illicit Discharge
 Construction Activity

Field Notes: Looks good.

Photos:





North Oak Private Crossing West

Location Details:

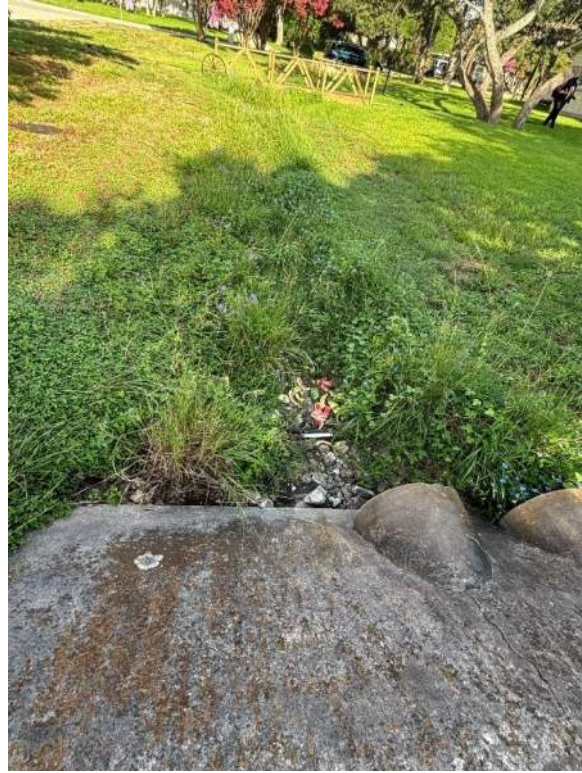
Created: 2019-06-21 by Kevin Hoffman
Updated: 2025-06-26 by Jones Ard
Location: 29.60732417, -98.48862362
Status: Pipe
Feature Type: Pipe
Feature Name: North Oak Prive Crossing West

Inspection Details:

Inspection Date: 2025-06-26
Inspector: Jones Ard
Field Inspection:
 No Maintenance Required
 Needs Maintenance
 Illicit Discharge
 Construction Activity

Field Notes: Trim vegetation and remove trash from west side of pipe.

Photos:



Oak Circle Creek Inlet

Location Details:

Created: 2019-06-21 by Kevin Hoffman
Updated: 2025-06-26 by John Sablan
Location:
Status: Inlet
Feature Type: Inlet
Feature Name: Oak Creek Circle Inlet

Inspection Details:

Inspection Date: 2025-06-26
Inspector: John Sablan
Field Inspection:
 No Maintenance Required
 Needs Maintenance
 Illicit Discharge
 Construction Activity

Field Notes: Monitor sediment buildup, looks good otherwise.

Photos:



Oak Creek Circle Inlet 2

Location Details:

Created: 2025-06-26 by Jones Ard
Updated: 2025-07-09 by John Sablan
Location: 29.59110311313294, -98.4755507254426
Status: Other
Feature Type: Other
Feature Name: Oak Circle Creek Inlet-2

Inspection Details:

Inspection Date: 2025-06-26
Inspector: John Sablan
Field Inspection:
 No Maintenance Required
 Needs Maintenance
 Illicit Discharge
 Construction Activity

Field Notes: Looks good.

Photos:



Oak Creek Circle Channel

Location Details:

Created: 2019-06-21 by Kevin Hoffman
Updated: 2025-06-26 by John Sablan
Location: 29.59174908, -98.47460568
Status: Outfall
Feature Type: Outfall
Feature Name: Oak Creek Circle Channel

Inspection Details:

Inspection Date: 2025-06-26
Inspector: John Sablan
Field Inspection:

- No Maintenance Required
- Needs Maintenance
- Illicit Discharge
- Construction Activity

Field Notes: Looks good, monitor vegetation.

Photos:



Oak Creek Circle Storm Sewer Pipe

Location Details:

Created: 2019-06-21 by Kevin Hoffman
Updated: 2025-07-10 by John Sablan
Location: 29.59120477, -98.47480166
Status: Pipe
Feature Type: Pipe
Feature Name: Oak Creek Circle Storm Sewer Pipe

Inspection Details:

Inspection Date: 2025-07-10
Inspector: John Sablan
Field Inspection:

- No Maintenance Required
- Needs Maintenance
- Illicit Discharge
- Construction Activity

Field Notes: Looks good.

Photos:



OAK-I-1(M)

Location Details:

Created: 2019-06-21 by Kevin Hoffman
Updated: 2025-06-26 by John Sablan
Location: 29.59114158, -98.4748248
Status: Inlet
Feature Type: Inlet
Feature Name: OAK-I-1(M)

Inspection Details:

Inspection Date: 2025-06-26
Inspector: John Sablan
Field Inspection:

- No Maintenance Required
- Needs Maintenance
- Illicit Discharge
- Construction Activity

Field Notes: Looks good monitor spalling.

Photos:



OAK-I-2(M)

Location Details:

Created: 2019-06-21 by Kevin Hoffman
Updated: 2025-06-26 by John Sablan
Location: 29.59126797, -98.47477851
Status: Inlet
Feature Type: Inlet
Feature Name: OAK-I-2(M)

Inspection Details:

Inspection Date: 2025-06-26
Inspector: John Sablan
Field Inspection:

- No Maintenance Required
- Needs Maintenance
- Illicit Discharge
- Construction Activity

Field Notes: Looks good.

Photos:



Optometrist Roundabout PCD

Location Details:

Created: 2019-06-21 by Kevin Hoffman
Updated: 2025-06-26 by Jones Ard
Location: 29.59527832, -98.47407988
Status: BMP
Feature Type: BMP
Feature Name: Optometrist Roundabout PCD

Inspection Details:

Inspection Date: 2025-06-26
Inspector: Jones Ard
Field Inspection:
 No Maintenance Required
 Needs Maintenance
 Illicit Discharge
 Construction Activity

Field Notes: Looks good, may need to monitor sediment buildup.
Nearby rain gauge shows 0.5" precipitation

Photos:



Pantheon Commercial Strip PCD

Location Details:

Created: 2019-06-21 by Kevin Hoffman
Updated: 2025-06-26 by John Sablan
Location: 29.59568297, -98.47441321
Status: BMP
Feature Type: BMP
Feature Name: Pantheon Commercial Strip PCD

Inspection Details:

Inspection Date: 2025-06-26
Inspector: John Sablan
Field Inspection:

- No Maintenance Required
- Needs Maintenance
- Illicit Discharge
- Construction Activity

Field Notes: Looks good.

Photos:





Park Oak Outfall

Location Details:

Created: 2019-06-21 by Kevin Hoffman
Updated: 2025-06-26 by Jones Ard
Location: 29.60636258, -98.48702431
Status: Outfall
Feature Type: Outfall
Feature Name: Park Oak Outfall

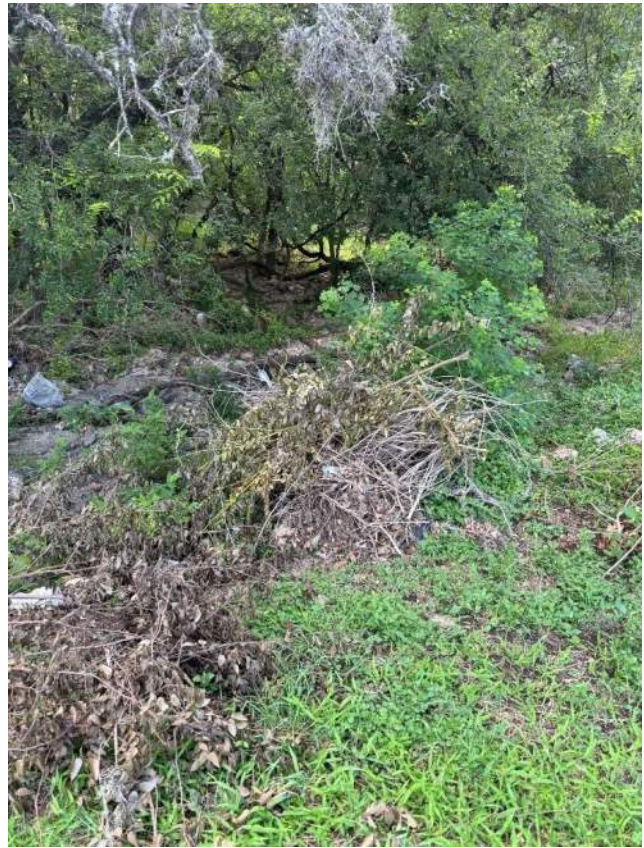
Photos:

Inspection Details:

Inspection Date: 2025-06-26
Inspector: Jones Ard
Field Inspection:

- No Maintenance Required
- Needs Maintenance
- Illicit Discharge
- Construction Activity

Field Notes: Lots of vegetation overgrowth and tree debris in channel.
Remove vegetation and debris.





Parking Lot Box Inlet

Location Details:

Created: 2019-11-21 by Jamie Taylor
Updated: 2025-06-26 by Jones Ard
Location: 29.5998061815, -98.4719093889
Status: Inlet
Feature Type: Inlet
Feature Name: Park lot box inlet.

Inspection Details:

Inspection Date: 2025-06-26
Inspector: Jones Ard
Field Inspection:
 No Maintenance Required
 Needs Maintenance
 Illicit Discharge
 Construction Activity

Field Notes: Looks good.

Photos:



Paseo Canada Outfall 1

Location Details:

Created: 2019-06-26 by Jamie Taylor
Updated: 2025-06-26 by Jones Ard
Location: 29.6070857925, -98.4901313111
Status: Outfall
Feature Type: Outfall
Feature Name: Paseo Canada outfall 1

Inspection Details:

Inspection Date: 2025-06-26
Inspector: Jones Ard
Field Inspection:
 No Maintenance Required
 Needs Maintenance
 Illicit Discharge
 Construction Activity

Field Notes: Looks good.

Photos:



Canada Outfall 2

Location Details:

Created: 2019-06-21 by Kevin Hoffman
Updated: 2025-06-26 by Jones Ard
Location: 29.60651649, -98.49506021
Status: Outfall
Feature Type: Outfall
Feature Name: Paseo Canda Outfall 2

Inspection Details:

Inspection Date: 2025-06-26
Inspector: Jones Ard
Field Inspection:
 No Maintenance Required
 Needs Maintenance
 Illicit Discharge
 Construction Activity

Field Notes: Remove tree limbs from channel.

Photos:



PCD2 Pediatrics

Location Details:

Created: 2019-11-20 by Jamie Taylor
Updated: 2025-06-26 by Jones Ard
Location: 29.5982828, -98.4724169
Status: BMP
Feature Type: BMP
Feature Name: PCD2 Pediatrics

Inspection Details:

Inspection Date: 2025-06-26
Inspector: Jones Ard
Field Inspection:
 No Maintenance Required
 Needs Maintenance
 Illicit Discharge
 Construction Activity

Field Notes: Remove leaves from basin.

Photos:



Pediatric Dentistry Office PCD

Location Details:

Created: 2019-06-21 by Kevin Hoffman
Updated: 2025-07-09 by Jones Ard
Location: 29.59818648, -98.47215917
Status: BMP
Feature Type: BMP
Feature Name: Pediatric Dentistry Office PCD

Inspection Details:

Inspection Date: 2025-07-09
Inspector: Jones Ard
Field Inspection:

- No Maintenance Required
- Needs Maintenance
- Illicit Discharge
- Construction Activity

Field Notes: Remove trash and leaves from grate. Remove signage, debris, and vegetation from basin interior.

Photos:





Permeable Pavers

Location Details:

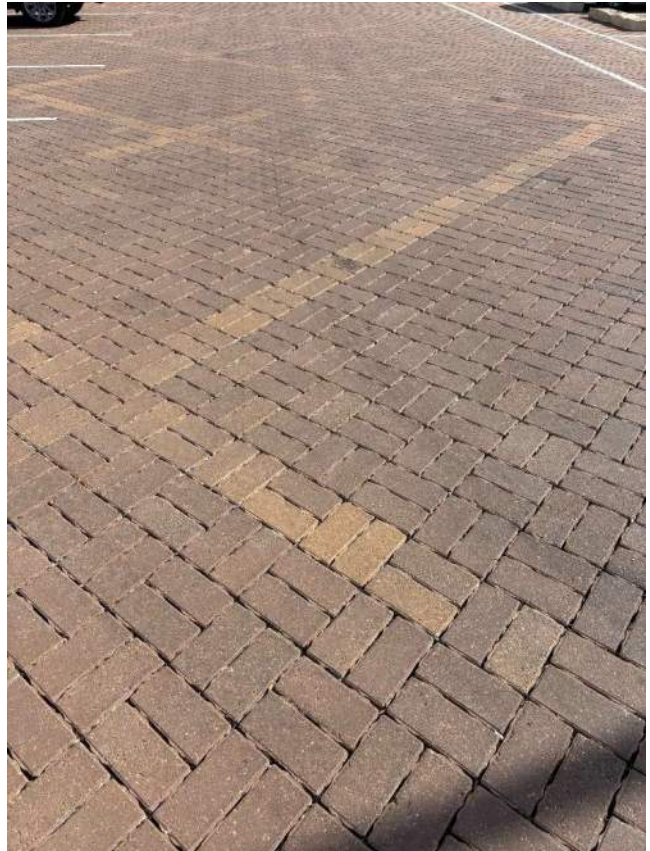
Created: 2019-11-20 by Jamie Taylor
Updated: 2025-06-26 by Jones Ard
Location: 29.599329834329982, -98.50023284554482
Status: BMP
Feature Type: BMP
Feature Name: Permeable Pavers

Inspection Details:

Inspection Date: 2025-06-26
Inspector: Jones Ard
Field Inspection:
 No Maintenance Required
 Needs Maintenance
 Illicit Discharge
 Construction Activity

Field Notes: Looks good.

Photos:



Premier 1 Auto Care Inlet

Location Details:

Created: 2019-06-26 by Jamie Taylor
Updated: 2025-06-26 by John Sablan
Location: 29.5919645327, -98.4745245427
Status: Inlet
Feature Type: Inlet
Feature Name: Premier 1 Auto Care Inlet

Inspection Details:

Inspection Date: 2025-06-26
Inspector: John Sablan
Field Inspection:
 No Maintenance Required
 Needs Maintenance
 Illicit Discharge
 Construction Activity

Field Notes: Looks good, slightly overgrown vegetation.

Photos:



Premier 1 Autocare Inlet 1

Location Details:

Created: 2019-06-26 by Jamie Taylor
Updated: 2025-06-26 by John Sablan
Location: 29.5923869792, -98.4737540781
Status: Inlet
Feature Type: Inlet
Feature Name: Premier 1 Autocare Inlet 1

Inspection Details:

Inspection Date: 2025-06-26
Inspector: John Sablan
Field Inspection:
 No Maintenance Required
 Needs Maintenance
 Illicit Discharge
 Construction Activity

Field Notes: Looks good.

Photos:



Premier Autocare Inlet 2

Location Details:

Created: 2019-06-26 by Jamie Taylor
Updated: 2025-06-26 by John Sablan
Location: 29.5924989316, -98.4737195447
Status: Inlet
Feature Type: Inlet
Feature Name: Premier Autocare Inlet2

Inspection Details:

Inspection Date: 2025-06-26
Inspector: John Sablan
Field Inspection:

- No Maintenance Required
- Needs Maintenance
- Illicit Discharge
- Construction Activity

Field Notes: Looks good.

Photos:



Premier 1 Autocare Parking Lot Inlet

Location Details:

Created: 2025-06-26 by John Sablan
Updated: 2025-06-26 by John Sablan
Location: 29.592161, -98.473881
Status: Inlet
Feature Type: Inlet
Feature Name: Premier 1 Autocare Parking Lot Inlet

Inspection Details:

Inspection Date: 2025-06-26
Inspector: John Sablan
Field Inspection:
 No Maintenance Required
 Needs Maintenance
 Illicit Discharge
 Construction Activity

Field Notes: Minor debris on grate looks good otherwise.

Photos:



Private Outfall

Location Details:

Created: 2019-06-21 by Kevin Hoffman
Updated: 2025-06-26 by Jones Ard
Location: 29.603219, -98.493062
Status: Outfall
Feature Type: Outfall
Feature Name: Private Outfall

Inspection Details:

Inspection Date: 2025-06-26
Inspector: Jones Ard
Field Inspection:

- No Maintenance Required
- Needs Maintenance
- Illicit Discharge
- Construction Activity

Field Notes: Looks good.

Photos:



Public Storage Outfall

Location Details:

Created: 2019-06-21 by Kevin Hoffman
Updated: 2025-06-26 by John Sablan
Location: 29.594819, -98.47438037
Status: Outfall
Feature Type: Outfall
Feature Name: Public Storage Outfall

Inspection Details:

Inspection Date: 2025-06-26
Inspector: John Sablan
Field Inspection:

- No Maintenance Required
- Needs Maintenance
- Illicit Discharge
- Construction Activity

Field Notes: Unable to locate, needs mowing.

Photos:



Residential Drain Pipe

Location Details:

Created: 2021-07-01 by Kevin Hunt
Updated: 2025-06-26 by Jones Ard
Location: 29.602656929502764, -98.47891464829445
Status: Other
Feature Type: Other
Feature Name: Residential drain pipe

Inspection Details:

Inspection Date: 2025-06-26
Inspector: Jones Ard
Field Inspection:
 No Maintenance Required
 Needs Maintenance
 Illicit Discharge
 Construction Activity

Field Notes: Looks good.

Photos:



Retention Pond with Infiltration

Location Details:

Created: 2019-06-26 by Jamie Taylor
Updated: 2025-06-26 by John Sablan
Location: 29.59011554, -98.47730432
Status: Pond
Feature Type: Pond
Feature Name: Retention Pond w/ Infiltration

Inspection Details:

Inspection Date: 2025-06-26
Inspector: John Sablan
Field Inspection:
 No Maintenance Required
 Needs Maintenance
 Illicit Discharge
 Construction Activity

Field Notes: Looks good, functioning as intended with recent precipitation.

Photos:



Ridge Trail Crossing

Location Details:

Created: 2019-06-21 by Kevin Hoffman
Updated: 2025-06-26 by Jones Ard
Location: 29.60719145, -98.47599862
Status: Pipe
Feature Type: Pipe
Feature Name: Ridge Trail Crossing

Inspection Details:

Inspection Date: 2025-06-26
Inspector: Jones Ard
Field Inspection:
 No Maintenance Required
 Needs Maintenance
 Illicit Discharge
 Construction Activity

Field Notes: Looks good.

Photos:





Rua De Matta

Location Details:

Created: 2019-06-21 by Kevin Hoffman
Updated: 2025-06-26 by Jones Ard
Location: 29.60066296, -98.47859144
Status: Outfall
Feature Type: Outfall
Feature Name: Rua De Matta

Inspection Details:

Inspection Date: 2025-06-26
Inspector: Jones Ard
Field Inspection:

- No Maintenance Required
- Needs Maintenance
- Illicit Discharge
- Construction Activity

Field Notes: Trim vegetation at entrance near road; otherwise, looks good.

Photos:



Rua De Matta Street Channel Outfall

Location Details:

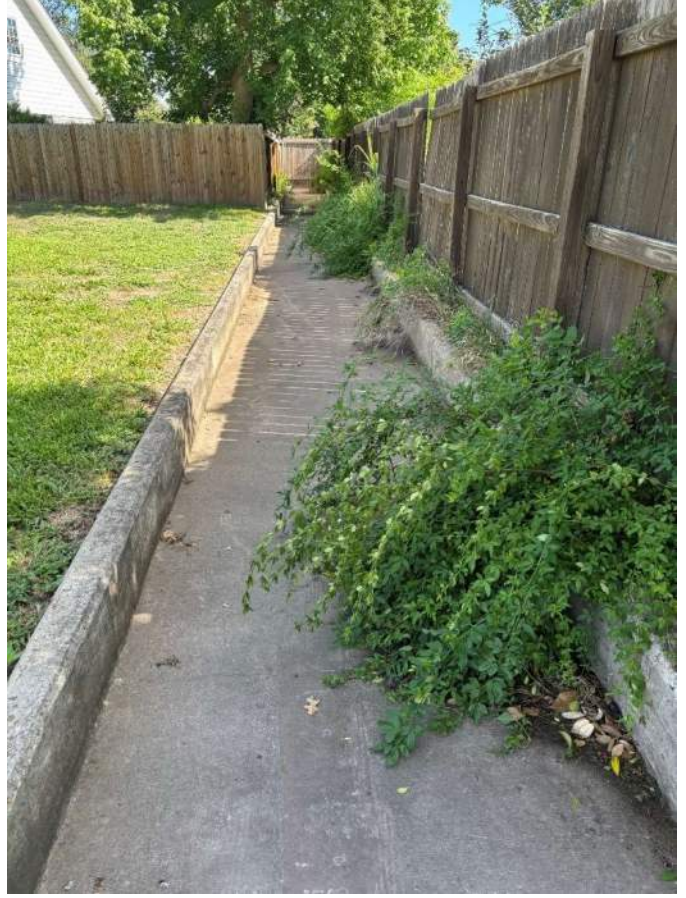
Created: 2019-06-21 by Kevin Hoffman
Updated: 2025-06-26 by Jones Ard
Location: 29.60098392, -98.4879024
Status: Outfall
Feature Type: Outfall
Feature Name: Rua De Matta street channel outfall

Inspection Details:

Inspection Date: 2025-06-26
Inspector: Jones Ard
Field Inspection:
 No Maintenance Required
 Needs Maintenance
 Illicit Discharge
 Construction Activity

Field Notes: Clear vegetation and debris from channel.

Photos:



Sagecrest Crossing East

Location Details:

Created: 2019-06-21 by Kevin Hoffman
Updated: 2025-06-26 by Jones Ard
Location: 29.60527253, -98.47745932
Status: Pipe
Feature Type: Pipe
Feature Name: Sagecrest Crossing East

Inspection Details:

Inspection Date: 2025-06-26
Inspector: Jones Ard
Field Inspection:

- No Maintenance Required
- Needs Maintenance
- Illicit Discharge
- Construction Activity

Field Notes: Trim vegetation near north culvert entrance; otherwise looks good.

Photos:





Sagecrest Crossing West

Location Details:

Created: 2019-06-21 by Kevin Hoffman
Updated: 2025-06-26 by Jones Ard
Location: 29.60488616, -98.48231891
Status: Pipe
Feature Type: Pipe
Feature Name: Sagecrest Crossing West

Inspection Details:

Inspection Date: 2025-06-26
Inspector: Jones Ard
Field Inspection:
 No Maintenance Required
 Needs Maintenance
 Illicit Discharge
 Construction Activity

Field Notes: Trim overgrown vegetation in channel and around the low water crossing marks.

Photos:





Sediment Buildup at Tall Oak

Location Details:

Created: 2021-12-16 by Jones Ard
Updated: 2025-06-26 by Jones Ard
Location: 29.6027659, -98.4791583
Status: Other
Feature Type: Other
Feature Name: Sediment buildup at Tall Oak

Inspection Details:

Inspection Date: 2025-06-26
Inspector: Jones Ard
Field Inspection:
 No Maintenance Required
 Needs Maintenance
 Illicit Discharge
 Construction Activity

Field Notes: Remove loose sediment that has collected in the roadway.

Photos:



Sequoia Dr Home Construction

Location Details:

Created: 2025-06-26 by John Sablan
Updated: 2025-06-26 by John Sablan
Location: 29.595688353320252, -98.48124456601076
Status: Other
Feature Type: Other
Feature Name: Sequoia Dr Home Construction

Inspection Details:

Inspection Date: 2025-06-26
Inspector: John Sablan
Field Inspection:
 No Maintenance Required
 Needs Maintenance
 Illicit Discharge
 Construction Activity

Field Notes: Active construction site, looks good monitor for sediment runoff.

Photos:



Service King Collision Repair Extended Parking Lot PCD

Location Details:

Created: 2019-06-21 by Kevin Hoffman
Updated: 2025-06-26 by John Sablan
Location: 29.59067807, -98.47572773
Status: BMP
Feature Type: BMP
Feature Name: Service King Collision Repair Extended Parking Lot PCD

Inspection Details:

Inspection Date: 2025-06-26
Inspector: John Sablan
Field Inspection:

- No Maintenance Required
- Needs Maintenance
- Illicit Discharge
- Construction Activity

Field Notes: Remove overgrown vegetation, looks good otherwise.

Photos:



Service King Collision Repair PCD

Location Details:

Created: 2019-06-21 by Kevin Hoffman
Updated: 2025-06-26 by John Sablan
Location: 29.59074953, -98.47543578
Status: BMP
Feature Type: BMP
Feature Name: Service King Collision Repair PCD

Inspection Details:

Inspection Date: 2025-06-26
Inspector: John Sablan
Field Inspection:

- No Maintenance Required
- Needs Maintenance
- Illicit Discharge
- Construction Activity

Field Notes: Remove overgrown vegetation.

Photos:



Shady Trails Rundown

Location Details:

Created: 2020-07-31 by Kevin Hunt
Updated: 2025-06-26 by Jones Ard
Location: 29.60634421271383, -98.47744580358267
Status: Outfall
Feature Type: Outfall
Feature Name: Shady trails rundown

Inspection Details:

Inspection Date: 2025-06-26
Inspector: Jones Ard
Field Inspection:
 No Maintenance Required
 Needs Maintenance
 Illicit Discharge
 Construction Activity

Field Notes: Trim down shrubs in channel, otherwise looks good.

Photos:



Spillway Structure

Location Details:

Created: 2019-11-21 by Jamie Taylor
Updated: 2025-06-26 by John Sablan
Location: 29.5962956191, -98.476181142
Status: Skimmer/Weir
Feature Type: Skimmer/Weir
Feature Name: Spillway structure

Inspection Details:

Inspection Date: 2025-06-26
Inspector: John Sablan
Field Inspection:
 No Maintenance Required
 Needs Maintenance
 Illicit Discharge
 Construction Activity

Field Notes: No apparent changes since last inspection, continue to monitor structure.

Photos:







Spoil Pile

Location Details:

Created: 2025-06-26 by Jones Ard
Updated: 2025-06-26 by Jones Ard
Location: 29.603795, -98.480495
Status: Other
Feature Type: Other
Feature Name: Spoil Pile

Inspection Details:

Inspection Date: 2025-06-26
Inspector: Jones Ard
Field Inspection:
 No Maintenance Required
 Needs Maintenance
 Illicit Discharge
 Construction Activity

Field Notes: Onsite spoil pile. Monitor to ensure there is no discharge into the road.

Photos:



Sterling Browning Crossing

Location Details:

Created: 2019-06-21 by Kevin Hoffman
Updated: 2025-06-26 by Jones Ard
Location: 29.60736362, -98.48909731
Status: Other
Feature Type: Other
Feature Name: Sterling Browning Crossing

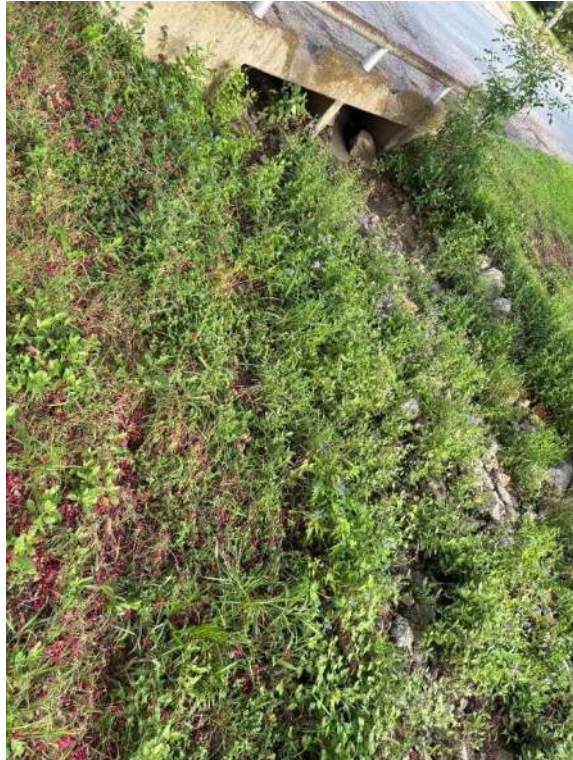
Inspection Details:

Inspection Date: 2025-06-26
Inspector: Jones Ard
Field Inspection:

- No Maintenance Required
- Needs Maintenance
- Illicit Discharge
- Construction Activity

Field Notes: Trim vegetation on east side of culvert and remove sediment and debris inside of culvert on west side.

Photos:



Stream Gauge

Location Details:

Created: 2019-11-20 by Jamie Taylor
Updated: 2025-06-26 by John Sablan
Location: 29.5949429034, -98.4754401818
Status: Inlet
Feature Type: Inlet
Feature Name: Stream gauge?

Inspection Details:

Inspection Date: 2025-06-26
Inspector: John Sablan
Field Inspection:
 No Maintenance Required
 Needs Maintenance
 Illicit Discharge
 Construction Activity

Field Notes: Remove debris looks good otherwise.

Photos:



Street Outlet 1

Location Details:

Created: 2019-11-20 by Jamie Taylor
Updated: 2025-06-26 by John Sablan
Location: 29.5899123328, -98.4790397063
Status: Outfall
Feature Type: Outfall
Feature Name: Street outlet

Inspection Details:

Inspection Date: 2025-06-26
Inspector: John Sablan
Field Inspection:
 No Maintenance Required
 Needs Maintenance
 Illicit Discharge
 Construction Activity

Field Notes: Looks good.

Photos:



Sunway Dr. Home Construction

Location Details:

Created: 2019-11-20 by Jamie Taylor
Updated: 2025-06-26 by John Sablan
Location: 29.592576, -98.476356
Status: Outfall
Feature Type: Outfall
Feature Name: Street outlet

Inspection Details:

Inspection Date: 2025-06-26
Inspector: John Sablan
Field Inspection:
 No Maintenance Required
 Needs Maintenance
 Illicit Discharge
 Construction Activity

Field Notes: Home construction, monitor for runoff.

Photos:



Tall Oak Outfall

Location Details:

Created: 2019-06-21 by Kevin Hoffman
Updated: 2025-06-26 by Jones Ard
Location: 29.60254149, -98.47885363
Status: Outfall
Feature Type: Outfall
Feature Name: Tall Oak Outfall

Inspection Details:

Inspection Date: 2025-06-26
Inspector: Jones Ard
Field Inspection:
 No Maintenance Required
 Needs Maintenance
 Illicit Discharge
 Construction Activity

Field Notes: Looks good.

Photos:



Texas Roadhouse

Location Details:

Created: 2019-11-20 by Jamie Taylor
Updated: 2025-06-26 by Jones Ard
Location: 29.5962384789, -98.4728317335
Status: Inlet
Feature Type: Inlet
Feature Name: Texas Roadhouse

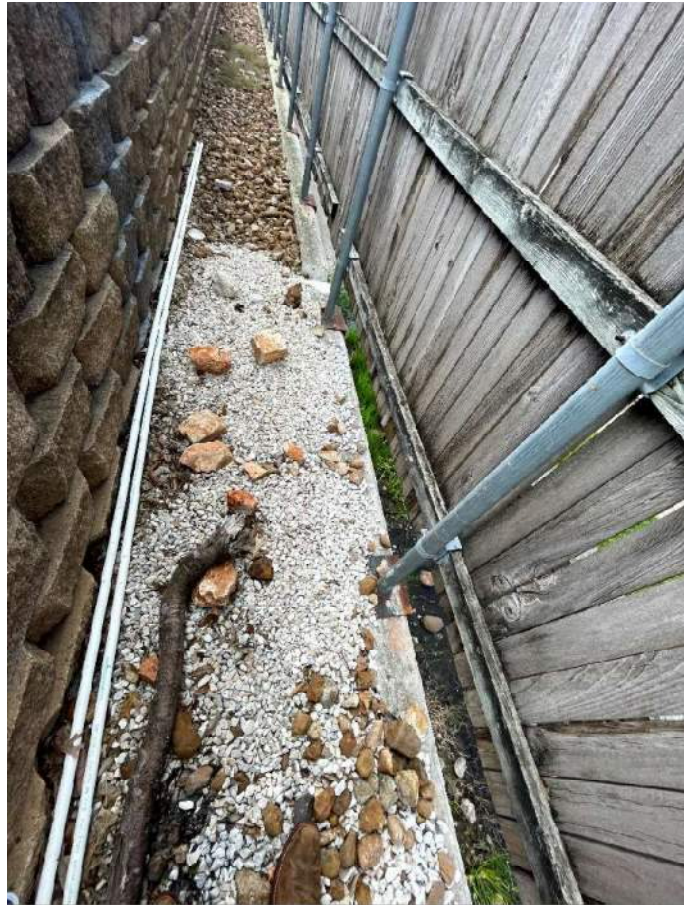
Inspection Date: 2025-06-26
Inspector: Jones Ard
Field Inspection:
 No Maintenance Required
 Needs Maintenance
 Illicit Discharge
 Construction Activity

Field Notes: Water draining from Texas Roadhouse, unknown source recent work appears to have been done at pipes discharging water, clear vegetation from channel.

Inspection Details:

Photos:







Tiger Tail Outfall

Location Details:

Created: 2019-06-21 by Kevin Hoffman
Updated: 2025-06-26 by Jones Ard
Location: 29.60049096, -98.47778309
Status: Outfall
Feature Type: Outfall
Feature Name: Tiger Tail Outfall

Inspection Details:

Inspection Date: 2025-06-26
Inspector: Jones Ard
Field Inspection:
 No Maintenance Required
 Needs Maintenance
 Illicit Discharge
 Construction Activity

Field Notes: Looks good.

Photos:



TXDOT at Lorence Creek

Location Details:

Created: 2019-06-21 by Kevin Hoffman
Updated: 2025-06-26 by Jones Ard
Location: 29.5943814, -98.47322602
Status: Outfall
Feature Type: Outfall
Feature Name: TXDOT at Lorence Creek

Inspection Details:

Inspection Date: 2025-06-26
Inspector: Jones Ard
Field Inspection:
 No Maintenance Required
 Needs Maintenance
 Illicit Discharge
 Construction Activity

Field Notes: Remove brush blocking culverts, mow vegetation.

Photos:







Unknown Residential Drain Pipe Into MS4 System

Location Details:

Created: 2019-10-29 by Jamie Taylor
Updated: 2025-06-26 by John Sablan
Location: 29.5992759026, -98.4745094553
Status: Pipe
Feature Type: Pipe
Feature Name: Unknown residential drain pipe into MS4 System.

Inspection Details:

Inspection Date: 2025-06-26
Inspector: John Sablan
Field Inspection:
 No Maintenance Required
 Needs Maintenance
 Illicit Discharge
 Construction Activity

Field Notes: Looks good.

Photos:



Valvoline PCD

Location Details:

Created: 2019-06-21 by Kevin Hoffman
Updated: 2025-06-26 by John Sablan
Location: Feature Type: BMP
Feature Name: Valvoline PCD

Inspection Date: 2025-06-26
Inspector: John Sablan
Field Inspection:
 No Maintenance Required
 Needs Maintenance
 Illicit Discharge
 Construction Activity

Field Notes: Monitor sediment, fix gate to restrict unauthorized entry.

Inspection Details:

Photos:



Varco

Location Details:

Created: 2019-11-20 by Jamie Taylor
Updated: 2025-06-26 by Jones Ard
Location: 29.5975905941, -98.472356312
Status: Inlet
Feature Type: Inlet
Feature Name: Varco

Inspection Details:

Inspection Date: 2025-06-26
Inspector: Jones Ard
Field Inspection:
 No Maintenance Required
 Needs Maintenance
 Illicit Discharge
 Construction Activity

Field Notes: Looks good.

Photos:



Varco 2

Location Details:

Created: 2019-11-20 by Jamie Taylor
Updated: 2025-06-26 by John Sablan
Location: 29.5978730842, -98.4736441076
Status: Inlet
Feature Type: Inlet
Feature Name: Varco2

Inspection Details:

Inspection Date: 2025-06-26
Inspector: John Sablan
Field Inspection:
 No Maintenance Required
 Needs Maintenance
 Illicit Discharge
 Construction Activity

Field Notes: Looks good.

Photos:



Grate Inlet

Location Details:

Created: 2019-06-21 by Kevin Hoffman
Updated: 2025-06-26 by Jones Ard
Location: 29.6068575474, -98.4922918305
Status: Inlet
Feature Type: Inlet
Feature Name: Voigt Grate Inlet

Inspection Details:

Inspection Date: 2025-06-26
Inspector: Jones Ard
Field Inspection:
 No Maintenance Required
 Needs Maintenance
 Illicit Discharge
 Construction Activity

Field Notes: Looks good.

Photos:



Voigt Park Inlet

Location Details:

Created: 2019-06-26 by Jamie Taylor
Updated: 2025-06-26 by Jones Ard
Location: 29.5996263126, -98.5005091131
Status: Inlet
Feature Type: Inlet
Feature Name: Voigt Park Inlet

Inspection Details:

Inspection Date: 2025-06-26
Inspector: Jones Ard
Field Inspection:
 No Maintenance Required
 Needs Maintenance
 Illicit Discharge

Field Notes: Remove leaves from around grate cover.

Photos:





Voigt Park Outfall North

Location Details:

Created: 2019-06-26 by Jamie Taylor
Updated: 2025-06-26 by Jones Ard
Location: 29.599617, -98.500961
Status: Inlet
Feature Type: Inlet
Feature Name: Voigt Park Outfall North

Photos:

Inspection Details:

Inspection Date: 2025-06-26
Inspector: Jones Ard
Field Inspection:

- No Maintenance Required
- Needs Maintenance
- Illicit Discharge
- Construction Activity

Field Notes: Clear rocks, leaves, and overgrown vegetation from culvert outfall.



Voigt Park Outfall

Location Details:

Created: 2019-06-21 by Kevin Hoffman
Updated: 2025-06-26 by John Sablan
Location: 29.59926803, -98.50133255
Status: Outfall
Feature Type: Outfall
Feature Name: Voigt Park Outfall

Photos:

Inspection Details:

Inspection Date: 2025-06-26
Inspector: John Sablan
Field Inspection:

- No Maintenance Required
- Needs Maintenance
- Illicit Discharge
- Construction Activity

Field Notes: Trim overgrown vegetation and remove trash around outfall.



Voigt Park Outfall Pipe

Location Details:

Created: 2019-06-26 by Jamie Taylor
Updated: 2025-06-26 by Jones Ard
Location: 29.599293977, -98.5013050586
Status: Outfall
Feature Type: Outfall
Feature Name: Voigt Park outfall pipe

Inspection Details:

Inspection Date: 2025-06-26
Inspector: Jones Ard
Field Inspection:
 No Maintenance Required
 Needs Maintenance
 Illicit Discharge
 Construction Activity

Field Notes Trim overgrown vegetation in front of outfall.

Photos:



Voigt Park Storm Sewer Outfall

Location Details:

Created: 2019-06-21 by Kevin Hoffman
Updated: 2025-06-26 by John Sablan
Location: 29.599499209, -98.5009949282
Status: Outfall
Feature Type: Outfall
Feature Name: Voigt Park Storm Sewer Outfall

Inspection Details:

Inspection Date: 2025-06-26
Inspector: John Sablan
Field Inspection:
 No Maintenance Required
 Needs Maintenance
 Illicit Discharge
 Construction Activity

Field Notes: Looks good.

Photos:





William Classen Outfall

Location Details:

Created: 2025-06-26 by John Sablan
Updated: 2025-06-26 by Jones Ard
Location: 29.59975571621712, -98.47533039064608
Status: Other
Feature Type: Other
Feature Name: William Classen Outfall

Inspection Details:

Inspection Date: 2025-06-26
Inspector: Jones Ard
Field Inspection:
 No Maintenance Required
 Needs Maintenance
 Illicit Discharge
 Construction Activity

Field Notes: Looks good.

Photos:



Yosemite Crossing East

Location Details:

Created: 2019-06-21 by Kevin Hoffman
Updated: 2025-06-26 by Jones Ard
Location: 29.6042678, -98.47766904
Status: Pipe
Feature Type: Pipe
Feature Name: Yosemite Crossing East

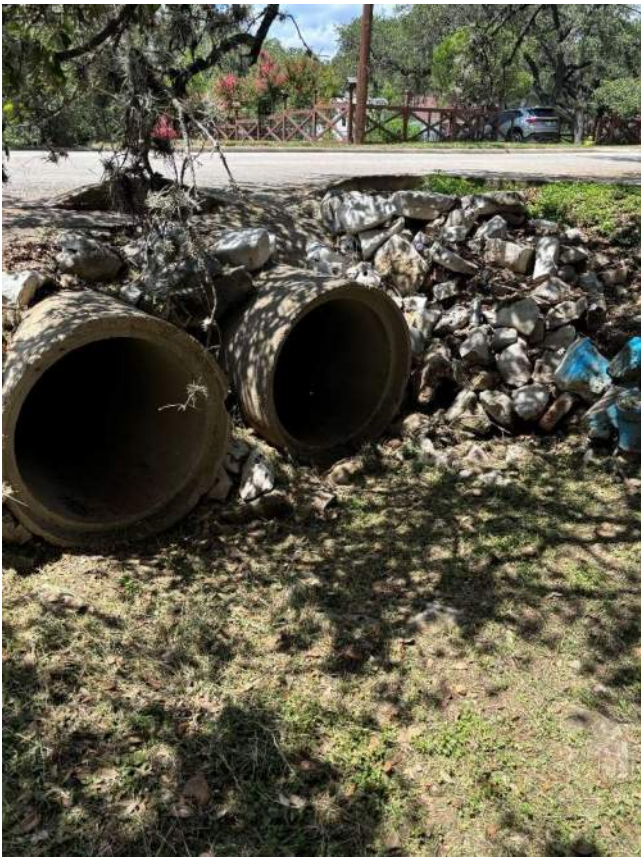
Inspection Details:

Inspection Date: 2025-06-26
Inspector: Jones Ard
Field Inspection:
 No Maintenance Required
 Needs Maintenance
 Illicit Discharge
 Construction Activity

Field Notes: Looks good.

Photos:





Yosemite Crossing West

Location Details:

Created: 2019-06-21 by Kevin Hoffman
Updated: 2025-06-26 by Jones Ard
Location: 29.60389274, -98.48202539
Status: Pipe
Feature Type: Pipe
Feature Name: Yosemite Crossing West

Inspection Details:

Inspection Date: 2025-06-26
Inspector: Jones Ard
Field Inspection:
 No Maintenance Required
 Needs Maintenance
 Illicit Discharge
 Construction Activity

Field Notes: Trim vegetation directly in front of north side inlet, otherwise looks good.

Photos:





