

# TOWN OF HOLLYWOOD PARK, TX

2023 Summer Inspection





# HOLLYWOOD PARK 2023 SUMMER INSPECTION REPORT

**To:** Frank Jaster, PE  
Senior Project Manager  
KCI Technologies Inc.  
2806 West Bitters Rd, Suite 218  
San Antonio, TX 78248

**From:** Daryl Spillmann  
Senior Project Engineer  
RESPEC  
1020 NE Loop 410, Suite 340  
San Antonio, TX 78209

**Date:** August 7, 2023

**Subject:** Annual Municipal Separate Storm Sewer System (MS4) Inspection

Dear Mr. Jaster,

RESPEC, Inc performed the annual MS4 inspection on behalf of KCI Technologies, Inc (KCI) for the Town of Hollywood Park (Town) in compliance with Texas Commission on Environmental Quality (TCEQ) reporting requirements to investigate and record:

- / Operational status of stormwater features within the Town limit
- / Features requiring maintenance
- / Locations where illicit discharge is occurring and
- / Ensuring overall MS4 meets TCEQ requirements for reporting

Types of features inspected within the MS4 include but are not limited to: streets, storm drain inlets, culverts, basins, ponds, outfalls and LID features.

Drainage inlets were reviewed for storm drain medallions, which inform the public against illicit discharge into the MS4. Existing medallions were reviewed for damage and will be replaced as needed, and medallions will be installed on inlets without markings.

Stormwater features were inspected for trash, debris, excess vegetation, and damage were recorded as requiring maintenance. Drainage of some features was also evaluated and features with poor drainage were also recorded as requiring maintenance.

Illicit discharge, as defined by TCEQ as: "Any discharge to a municipal separate storm sewer that is not entirely composed of stormwater", was also recorded. It is recommended to prioritize resolving and addressing areas with illicit discharge.

1020 NE LOOP 410, SUITE 340  
SAN ANTONIO, TX 78209  
210.570.5962  
TEXAS REGISTERED FIRM F-17502



The table below summarizes the documented features inspected in the 2022 report cycle:

Feature Status	Number of Features	Inspection Date	Next Inspection
Illicit Discharge	0	July 2023	TBD
Maintenance Required	54	July 2023	TBD

RESPEC has compiled a report of all 2023 stormwater inspection results containing:

- / Exhibit illustrating feature locations requiring action
- / Spreadsheet listing 2023 inspection records
- / Report outlining inspections, locations, and photos

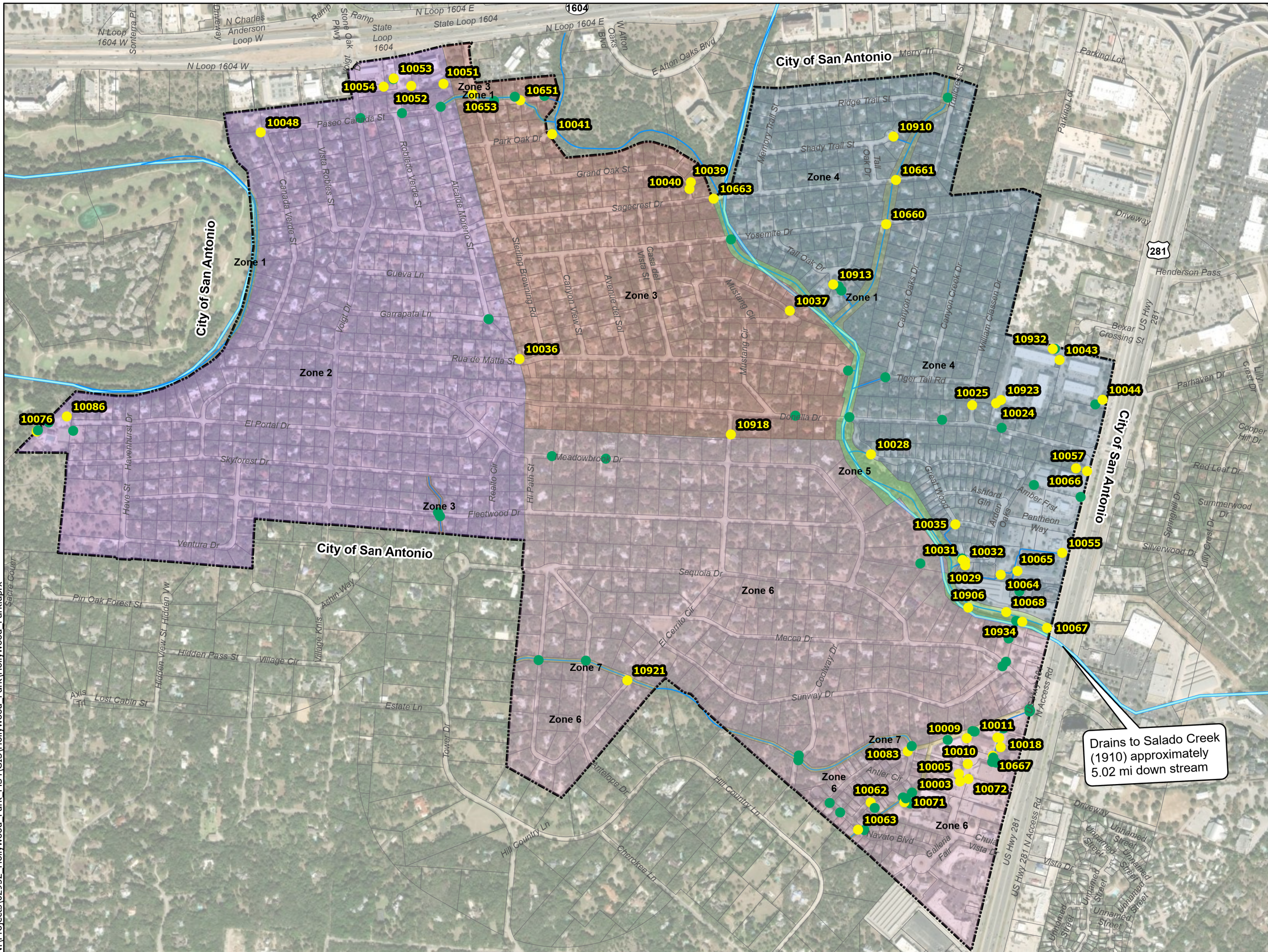
### Drainage Features with Maintenance Required.

Feature ID	Name	Feature	Maintenance
10029	Amber Creek PCD	BMP	Clear vegetation
10031	Amber Creek Southern Outfall and Channel	Outfall	Overgrown vegetation and trash
10062	ANT-I-1	Inlet	Remove buildup of sediment and leaves
10083	ANT-I-2	Inlet	Clear overgrown vegetation
10065	Brookdale PCD	BMP	Remove all vegetation
10035	Cascade Glen Sidewalk Drain	Inlet	Remove leaves from channel.
10044	Chandler Signs PCD in North Park Corporate Center Parking Lot	BMP	Trim vegetation and clean debris/trash. Remove leaves in the pipes under grate. Ensure pump station lid is closed and locked
10051	Chicago Title PCD	BMP	Needs debris cleanup.
10054	Corner Store PCD	BMP	Debris needs cleaning. Filters are in good condition. Trash needs to be picked up
10052	CRT Flooring Concepts PCD	BMP	Debris needs to be cleared. Filters look good.
10918	El Cerrito Cr Low Water Crossing	Other	Trim vegetation to clearly see sign
10921	El Cerrito Low Water Crossing	Other	Clear vegetation for sign visibility
10053	Express Lube PCD	BMP	Needs debris cleanup. Filters look good.
10039	Grand Oak Outfall	Outfall	Clear telephone wire and vegetation
10028	Great Wood Street Outfall	Outfall	Remove vegetation
10011	Holiday Inn PCD	BMP	Clear trash, debris, and vegetation
10024	Marriott Global Reservation PCD	BMP	Trim and control weeds/vegetation
10043	Miner Fleet PCD	BMP	Clear out debris and vegetation. Filters look good. Pipe is clear.
10932	Minor Sediment	Other	Clear sediment
10005	Monarch Trophy PCD	BMP	Clear vegetation and debris
10037	Mustang Circle	Outfall	Clear channel tall vegetation and debris. Otherwise good.
10063	Navato Blvd Inlet	Inlet	Clean leaves and cut tree
10009	New Drash Parking Lot Box Inlet	Inlet	Clear debris
10651	North Oak Crossing	Pipe	Clear vegetation out of culvert
10017	Oak Creek Circle Channel	Outfall	Clear Debris
10010	Oak Creek Circle Inlet	Inlet	Clear out debris
10667	Oak Creek Circle Storm Sewer Pipe	Pipe	Clear debris buildup
10064	Pantheon Commercial Strip PCD	Other	PCD in good condition, remove overgrown vegetation behind southern wall of PCD.
10041	Park Oak Outfall	Outfall	Trim vegetation, clean light debris
10048	Paseo Canada Outfall 2	Outfall	Clear weeds and trash
10057	PCD2 Pediatrics	BMP	Clear debris/trash and lock gate
10066	Pediatric Dentistry Office	BMP	Clean pipe out
10068	Public Storage Outfall	Outfall	Clear vegetation
10071	Retention Pond with Infiltration	Pond	Clear debris and vegetation
10047	Rua De Matta Street Channel Outfall	Outfall	Trim vegetation to fence line to allow flow
10661	Sagecrest Crossing East	Pipe	Trim vegetation
10663	Sagecrest Crossing West	Other	Pipes look good. Vegetation needs to be mowed down.
10032	Sediment	Other	Remove sediment build up
10913	Sediment Buildup at Tall Oak	Other	Clear sediment
10040	Sediment Buildup in Street	Other	Large pile of leaves
10923	Sediment Near Marriott Global	Other	Clear sediment
10072	Service King Collision Repair PCD	BMP	Clean out trash and debris.
10003	Service King Collision Repair Extended Parking Lot PCD	BMP	Clear rocks from pipe
10910	Shady Trails Rundown	Outfall	Trim vegetation, cut back bush, remove pile of leaves.
10653	Sterling Brown Crossing	Pipe	Clear large rocks, otherwise pretty clean.
10081	Stream Gauge	Inlet	Clear vegetation and dirt in grate
10055	Texas Roadhouse	Inlet	Clear debris and trash from channel
10934	Trash	Other	Large pile of trash and furniture next to Mecca Inlets Outfall
10067	TXDOT at Lorence Creek	Outfall	Clear trash and vegetation
10018	Valvoline PCD	BMP	Remove debris and vegetation. Close lid
10077	Voigt Park Inlet	Inlet	Clear off any mulch to fully expose the inlets
10076	Voigt Park Outfall	Outfall	Clear trash and debris in and around pipe.
10025	William Classen Outfall	Outfall	Trim vegetation so not in channel. Otherwise good.
10660	Yosemite Crossing East	Pipe	Make sure water depth sign isn't obstructed. Otherwise everything else good.

## Drainage Features with Medallions

<b>Name</b>	<b>Feature</b>
Parkinglot Box Inlet	Inlet
Cascade Glen Sidewalk Drain	inlet
Oak Creek Circle Inlet	inlet
MEC-I-1(M)	inlet
Oak -I-2(M)	inlet
Oak-1-1(M)	inlet
New Drash Parkinglot Box Inlet	inlet
ANT-I-1	inlet
Navato Blvd Inlet	Inlet
Optometrist Roundabout PCD	PCD
Donella Inlet Box	inlet
MEC-I-2(M)	inlet
Amber Creek Inlet	inlet
Varco	inlet
Varco2	inlet
Chula Vista Inlet	inlet

N:\Projects\02952\_Hollywood\_Park\_MS4\GIS\Hollywood\_Park\Hollywood\_Park.aprx



- ### Legend
- No Maintenance Required
  - Needs Maintenance
  - Drainage Channels
  - Streams
  - - - City Limits
  - ▭ Parcels

### TOWN OF HOLLYWOOD PARK 2023 SUMMER INSPECTION MAP



0 400 800  
 Feet  
 1 inch = 800 ft

RESPEC • 407 PARIS STREET, SUITE 1  
 CASTROVILLE, TEXAS 78009  
 TBPE FIRM NO. F-17502  
 WWW.RESPEC.COM

## Amber Creek Drainage Channel

### Location Details:

Created: 2019-11-21 by Jamie Taylor  
Updated: 2023-07-07 by Kevin Hunt  
Location: 29.596066, -98.475661  
Status: Inlet  
Feature Type: Inlet  
Feature Name: Amber Creek Drainage Channel  
Feature ID: 10033

### Inspection Details:

Inspection Date: 2023-07-07  
Inspector: Cade Wenberg  
Field Inspection:  No Maintenance Required  
 Needs Maintenance  
 Illicit Discharge

Field Notes: Good condition

### Photos:



## Amber Creek Inlet

### Location Details:

Created: 2019-06-21 by Kevin Hoffman  
Updated: 2023-07-07 by Hayden Dallmeyer  
Location: 29.596036, -98.475598  
Status: Inlet  
Feature Type: Inlet  
Feature Name: Amber Creek Inlet  
Feature ID: 10034

### Inspection Details:

Inspection Date: 2023-07-07  
Inspector: Jensen Altom  
Field Inspection:  
 No Maintenance Required  
 Needs Maintenance  
 Illicit Discharge

Field Notes: In good condition

### Photos:



## Amber Creek PCD

### Location Details:

Created: 2019-06-21 by Kevin Hoffman  
Updated: 2023-07-07 by Hayden Dallmeyer  
Location: 29.595877, -98.475487  
Status: BMP  
Feature Type: BMP  
Feature Name: Amber Creek PCD  
Feature ID: 10029

### Inspection Details:

Inspection Date: 2023-07-07  
Inspector: Jensen Altom  
Field Inspection:  
 No Maintenance Required  
 Needs Maintenance  
 Illicit Discharge

Field Notes: Clear vegetation

### Photos:



## Amber Creek Southern Outfall and Channel

### Location Details:

Created: 2019-22-21 by Jamie Taylor  
Updated: 2023-07-07 by Hayden Dallmeyer  
Location: 29.595588, -98.474675  
Status: Outfall  
Feature Type: Outfall  
Feature Name: Amber Creek Southern Outfall and Channel  
Feature ID: 10031

### Inspection Details:

Inspection Date: 2023-07-07  
Inspector: Jensen Altom  
Field Inspection:  
 No Maintenance Required  
 Needs Maintenance  
 Illicit Discharge

Field Notes: Overgrown vegetation and trash

### Photos:



## Antelope Dr Low Water Crossing

### Location Details:

Created: 2022-07-21 by Hayden Dallmeyer  
Updated: 2023-07-07 by Kevin Hunt  
Location: 29.593664, -98.486038  
Status: Other  
Feature Type: Other  
Feature Name: Antelope Dr Low Water Crossing  
Feature ID: 10929

### Inspection Details:

Inspection Date: 2023-07-07  
Inspector: Cade Wenberg  
Field Inspection:  No Maintenance Required  
 Needs Maintenance  
 Illicit Discharge

Field Notes: Good condition.

### Photos:



### ANT-I-1

#### Location Details:

Created: 2019-06-21 by Kevin Hoffman  
Updated: 2023-07-07 by Kevin Hunt  
Location: 29.590146, -98.478146  
Status: Inlet  
Feature Type: Inlet  
Feature Name: ABT-I-1  
Feature ID: 10062

#### Inspection Details:

Inspection Date: 2023-07-07  
Inspector: Cade Wenberg  
Field Inspection:  No Maintenance Required  
 Needs Maintenance  
 Illicit Discharge

Field Notes: Remove buildup of sediment and leaves

#### Photos:



## ANT-I-2

### Location Details:

Created: 2019-06-21 by Kevin Hoffman  
Updated: 2023-07-07 by Hayden Dallmeyer  
Location: 29.591410, -98.477155  
Status: Inlet  
Feature Type: Inlet  
Feature Name: ANT-I-2  
Feature ID: 10083

### Inspection Details:

Inspection Date: 2023-07-07  
Inspector: Jensen Altom  
Field Inspection:  
 No Maintenance Required  
 Needs Maintenance  
 Illicit Discharge

Field Notes: Clear overgrown vegetation

### Photos:



## Brookdale PCD

### Location Details:

Created: 2019-06-21 by Kevin Hoffman  
Updated: 2023-07-07 by Hayden Dallmeyer  
Location: 29.595694, -98.474112  
Status: BMP  
Feature Type: BMP  
Feature Name: Brookdale PCD  
Feature ID: 10065

### Inspection Details:

Inspection Date: 2023-07-07  
Inspector: Jensen Altom  
Field Inspection:  
 No Maintenance Required  
 Needs Maintenance  
 Illicit Discharge

Field Notes: Remove all vegetation

### Photos:



## Cascade Glen Sidewalk Drain

### Location Details:

Created: 2019-06-21 by Kevin Hoffman  
Updated: 2023-07-07 by Kevin Hunt  
Location: 29.596900, -98.475875  
Status: Inlet  
Feature Type: Inlet  
Feature Name: Cascade Glen Sidewalk Drain  
Feature ID: 10035

### Inspection Details:

Inspection Date: 2023-07-07  
Inspector: Cade Wenberg  
Field Inspection:  
 No Maintenance Required  
 Needs Maintenance  
 Illicit Discharge

Field Notes: Remove leaves from channel.

### Photos:



## Chandler Signs PCD in North Park Corporate Center Parking Lot

### Location Details:

Created: 2019-11-21 by Jamie Taylor  
Updated: 2023-07-07 by Kevin Hunt  
Location: 29.599954, -98.471723  
Status: BMP  
Feature Type: BMP  
Feature Name: Chandler Signs PCD in North Park Corporate Center  
Parking Lot  
Feature ID: 10044

### Inspection Details:

Inspection Date: 2023-07-07  
Inspector: Cade Wenberg  
Field Inspection:  No Maintenance Required  
 Needs Maintenance  
 Illicit Discharge

Field Notes: Trim vegetation and clean debris/trash. Remove leaves in the pipes under grate. Ensure pump station lid is closed and locked.

### Photos:



## Channel

### Location Details:

Created: 2019-06-26 by Jamie Taylor  
Updated: 2023-07-07 by Kevin Hunt  
Location: 29.590107, -98.477530  
Status: Outfall  
Feature Type: Outfall  
Feature Name: Channel  
Feature ID: 10070

### Inspection Details:

Inspection Date: 2023-07-07  
Inspector: Cade Wenberg  
Field Inspection:  
 No Maintenance Required  
 Needs Maintenance  
 Illicit Discharge  
Field Notes: Good Condition

### Photos:



## Chicago Title PCD

### Location Details:

Created: 2019-06-21 by Kevin Hoffman  
Updated: 2023-07-06 by Kevin Hunt  
Location: 29.607645, -98.489883  
Status: BMP  
Feature Type: BMP  
Feature Name: Chicago Title PCD  
Feature ID: 10051

### Photos:



### Inspection Details:

Inspection Date: 2023-07-06  
Inspector: Cade Wenberg  
Field Inspection:  
 No Maintenance Required  
 Needs Maintenance  
 Illicit Discharge

Field Notes: Needs debris cleanup.

## Chula Vista Dr Inlet

### Location Details:

Created: 2020-12-23 by Kevin Hunt  
Updated: 2023-07-07 by Hayden Dallmeyer  
Location: 29.590508, -98.476807  
Status: Inlet  
Feature Type: Inlet  
Feature Name: Chula Vista Dr Inlet  
Feature ID: 10927

### Inspection Details:

Inspection Date: 2023-07-07  
Inspector: Jensen Altom  
Field Inspection:  
 No Maintenance Required  
 Needs Maintenance  
 Illicit Discharge

Field Notes: Good Condition

### Photos:



### Corner Store PCD

#### Location Details:

Created: 2019-06-21 by Kevin Hoffman  
Updated: 2023-07-06 by Hayden Dallmeyer  
Location: 29.607578, -98.491624  
Status: BMP  
Feature Type: BMP  
Feature Name: Corner Store PCD  
Feature ID: 10054

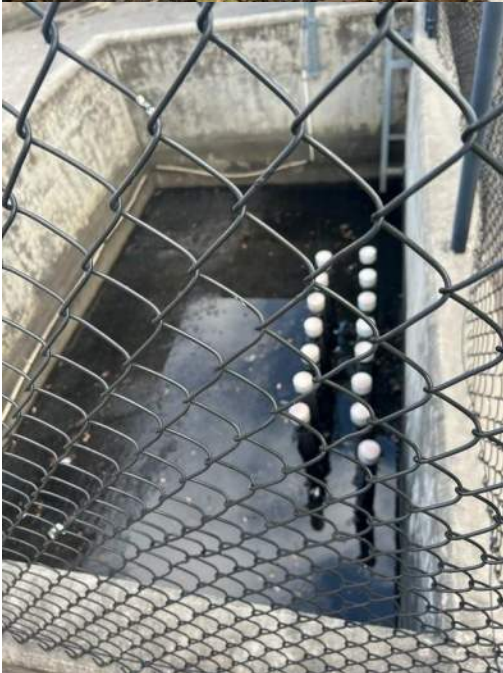
#### Inspection Details:

Inspection Date: 2023-07-06  
Inspector: Jensen Altom  
Field Inspection:

- No Maintenance Required
- Needs Maintenance
- Illicit Discharge

Field Notes: Debris needs cleaning. Filters are in good condition. Trash needs to be picked up.

#### Photos:



## CRT Flooring Concepts PCD

### Location Details:

Created: 2019-06-21 by Kevin Hoffman  
Updated: 2023-07-06 by Hayden Dallmeyer  
Location: 29.607619, -98.490902  
Status: BMP  
Feature Type: BMP  
Feature Name: CRT Flooring Concepts PCD  
Feature ID: 10052

### Photos:



### Inspection Details:

Inspection Date: 2023-07-06  
Inspector: Jensen Altom  
Field Inspection:  No Maintenance Required  
 Needs Maintenance  
 Illicit Discharge

Field Notes: Debris needs to be cleared. Filters look good.



## Curb Outlet, 1

### Location Details:

Created: 2019-11-20 by Jamie Taylor  
Updated: 2023-07-07 by Hayden Dallmeyer  
Location: 29.590160, -98.479332  
Status: Outfall  
Feature Type: Outfall  
Feature Name: Curb Outlet, 1  
Feature ID: 10061

### Inspection Details:

Inspection Date: 2023-07-07  
Inspector: Jensen Altom  
Field Inspection:  
 No Maintenance Required  
 Needs Maintenance  
 Illicit Discharge

Field Notes: In good condition

### Photos:



## Donella Crossing

### Location Details:

Created: 2019-06-21 by Kevin Hoffman  
Updated: 2023-07-06 by Hayden Dallmeyer  
Location: 29.599491, -98.478822  
Status: Pipe  
Feature Type: Pipe  
Feature Name: Donella Crossing  
Feature ID: 10859

### Inspection Details:

Inspection Date: 2023-07-06  
Inspector: Jensen Altom  
Field Inspection:  
 No Maintenance Required  
 Needs Maintenance  
 Illicit Discharge

Field Notes: Pipes in good condition.

### Photos:



## Donella Culvert Crossing at Mustang Circle

### Location Details:

Created: 2019-06-21 by Kevin Hoffman  
Updated: 2023-07-06 by Kevin Hunt  
Location: 29.599516, -98.480642  
Status: Pipe  
Feature Type: Pipe  
Feature Name: Donella Culvert Crossing at Mustang Circle  
Feature ID: 10670

### Inspection Details:

Inspection Date: 2023-07-06  
Inspector: Cade Wenberg  
Field Inspection:  
 No Maintenance Required  
 Needs Maintenance  
 Illicit Discharge

Field Notes: Looks good

### Photos:



## Donella Inlet box

### Location Details:

Created: 2019-11-21 by Jamie Taylor  
Updated: 2023-07-07 by Hayden Dallmeyer  
Location: 29.599448, -98.476156  
Status: Inlet  
Feature Type: Inlet  
Feature Name: Donella Inlet Box  
Feature ID: 10026

### Inspection Details:

Inspection Date: 2023-07-06  
Inspector: Jensen Altom  
Field Inspection:  
 No Maintenance Required  
 Needs Maintenance  
 Illicit Discharge

Field Notes: Good condition

### Photos:



## Drash Rear Parking Lot Inlet

### Location Details:

Created: 2019-11-21 by Jamie Taylor  
Updated: 2023-07-07 by Hayden Dallmeyer  
Location: 29.591700, -98.476047  
Status: Inlet  
Feature Type: Inlet  
Feature Name: Drash Rear Parking Lot Inlet  
Feature ID: 10008

### Inspection Details:

Inspection Date: 2023-07-07  
Inspector: Jensen Altom  
Field Inspection:  
 No Maintenance Required  
 Needs Maintenance  
 Illicit Discharge

Field Notes: In good condition

### Photos:



## El Cerrito Low Water Crossing

### Location Details:

Created: 2022-07-21 by Hayden Dallmeyer  
Updated: 2023-07-07 by Hayden Dallmeyer  
Location: 29.593119, -98.484912  
Status: Other  
Feature Type: Other  
Feature Name: El Cerrito Low Water Crossing  
Feature ID: 10921

### Inspection Details:

Inspection Date: 2023-07-07  
Inspector: Jensen Altom  
Field Inspection:

- No Maintenance Required
- Needs Maintenance
- Illicit Discharge

Field Notes: Clear vegetation for sign visibility

### Photos:



## El Cerrito Cr Low Water Crossing

### Location Details:

Created: 2022-07-21 by Hayden Dallmeyer  
Updated: 2023-07-07 by Hayden Dallmeyer  
Location: 29.599130, -98.482040  
Status: Other  
Feature Type: Other  
Feature Name: El Cerrito Cr Low Water Crossing  
Feature ID: 10918

### Inspection Details:

Inspection Date: 2023-07-07  
Inspector: Jensen Altom  
Field Inspection:  
 No Maintenance Required  
 Needs Maintenance  
 Illicit Discharge

Field Notes: Trim vegetation to clearly see sign

### Photos:



## El Cerrito Low Water Crossing West

### Location Details:

Created: 2022-07-21 by Hayden Dallmeyer  
Updated: 2023-07-07 by Hayden Dallmeyer  
Location: 29.593676, -98.487364  
Status: Other  
Feature Type: Other  
Feature Name: El Cerrito Low Water Crossing West  
Feature ID: 10922

### Inspection Details:

Inspection Date: 2023-07-07  
Inspector: Jensen Altom  
Field Inspection:  
 No Maintenance Required  
 Needs Maintenance  
 Illicit Discharge

Field Notes: Sign is visible

### Photos:



## Express Lube PCD

### Location Details:

Created: 2019-06-21 by Kevin Hoffman  
Updated: 2023-07-06 by Kevin Hunt  
Location: 29.607812, -98.491341  
Status: BMP  
Feature Type: BMP  
Feature Name: Express Lube PCD  
Feature ID: 10053

### Inspection Details:

Inspection Date: 2023-07-06  
Inspector: Cade Wenberg  
Field Inspection:  No Maintenance Required  
 Needs Maintenance  
 Illicit Discharge

### Photos:



Field Notes: Needs debris cleanup. Filters look good.



## Fleetwood Crossing

### Location Details:

Created: 2019-06-21 by Kevin Hoffman  
Updated: 2023-07-07 by Kevin Hunt  
Location: 29.597230, -98.490119  
Status: Pipe  
Feature Type: Pipe  
Feature Name: Fleetwood Crossing  
Feature ID: 10903

### Inspection Details:

Inspection Date: 2023-07-07  
Inspector: Cade Wenberg  
Field Inspection:  No Maintenance Required  
 Needs Maintenance  
 Illicit Discharge

Field Notes: Looks good.

### Photos:



## Garrapata Storm Water Inflow

### Location Details:

Created: 2020-07-29 by Kevin Hunt  
Updated: 2023-07-07 by Hayden Dallmeyer  
Location: 29.601931, -98.488731  
Status: Inlet  
Feature Type: Inlet  
Feature Name: Garrapata Storm Water Inflow  
Feature ID: 10909

### Inspection Details:

Inspection Date: 2023-07-07  
Inspector: Cade Wenberg  
Field Inspection:  No Maintenance Required  
 Needs Maintenance  
 Illicit Discharge

Field Notes: Looks good.

### Photos:



## Grand Oak Outfall

### Location Details:

Created: 2019-06-26 by Jamie Taylor  
Updated: 2023-07-06 by Hayden Dallmeyer  
Location: 29.605509, -98.486209  
Status: Outfall  
Feature Type: Outfall  
Feature Name: Grand Oak Outfall  
Feature ID: 10039

### Inspection Details:

Inspection Date: 2023-07-06  
Inspector: Jensen Altom  
Field Inspection:  
 No Maintenance Required  
 Needs Maintenance  
 Illicit Discharge

### Photos:



Field Notes: Clear telephone wire and vegetation



## Great Wood Street Outfall

### Location Details:

Created: 2019-11-21 by Jamie Taylor  
Updated: 2023-07-07 by Hayden Dallmeyer  
Location: 29.598620, -98.478171  
Status: Outfall  
Feature Type: Outfall  
Feature Name: Great Wood Street Outfall  
Feature ID: 10028

### Inspection Details:

Inspection Date: 2023-07-07  
Inspector: Jensen Altom  
Field Inspection:  
 No Maintenance Required  
 Needs Maintenance  
 Illicit Discharge

Field Notes: Remove vegetation

### Photos:



## Holiday Inn PCD

### Location Details:

Created: 2019-06-21 by Kevin Hoffman  
Updated: 2023-07-07 by Kevin Hunt  
Location: 29.591731, -98.474660  
Status: BMP  
Feature Type: BMP  
Feature Name: Holiday Inn PCD  
Feature ID: 10011

### Inspection Details:

Inspection Date: 2023-07-07  
Inspector: Cade Wenberg  
Field Inspection:  No Maintenance Required  
 Needs Maintenance  
 Illicit Discharge

### Photos:



Field Notes: Clear trash, debris. And vegetation



## Marriott Global Reservation PCD

### Location Details:

Created: 2019-06-21 by Kevin Hoffman  
Updated: 2023-07-07 by Kevin Hunt  
Location: 29.599830, -98.474616  
Status: BMP  
Feature Type: BMP  
Feature Name: Marriott Global Reservation PCD  
Feature ID: 10024

### Inspection Details:

Inspection Date: 2023-07-07  
Inspector: Cade Wenberg  
Field Inspection:  No Maintenance Required  
 Needs Maintenance  
 Illicit Discharge

Field Notes: Trim and control weeds/vegetation

### Photos:



## Mecca 1 Storm Sewer Pipe

### Location Details:

Created: 2019-06-21 by Kevin Hoffman  
Updated: 223-07-07 by Hayden Dallmeyer  
Location: 29.593525, -98.474473  
Status: Pipe  
Feature Type: Pipe  
Feature Name: Mecca 1 Storm Sewer Pipe  
Feature ID: 10658

Photos:

### Inspection Details:

Inspection Date: 2023-07-07  
Inspector: Jensen Altom  
Field Inspection:  
 No Maintenance Required  
 Needs Maintenance  
 Illicit Discharge

Field Notes: Underground

## Mecca Inlets Outfall

### Location Details:

Created: 2019-06-21 by Kevin Hoffman  
Updated: 2023-07-07 by Hayden Dallmeyer  
Location: 29.594519, -98.474119  
Status: Outfall  
Feature Type: Outfall  
Feature Name: Mecca Inlets Outfall  
Feature ID: 10069

### Inspection Details:

Inspection Date: 2023-07-07  
Inspector: Jensen Altom  
Field Inspection:  
 No Maintenance Required  
 Needs Maintenance  
 Illicit Discharge

Field Notes: In good condition

### Photos:



### MEC-I-1(M)

#### Location Details:

Created: 2019-06-21 by Kevin Hoffman  
Updated: 2023-07-07 by Kevin Hunt  
Location: 29.59470, -98.474511  
Status: Inlet  
Feature Type: Inlet  
Feature Name: MEC-I-1(M)  
Feature ID: 10079

#### Inspection Details:

Inspection Date: 2023-07-07  
Inspector: Cade Wenberg  
Field Inspection:  No Maintenance Required  
 Needs Maintenance  
 Illicit Discharge

Field Notes: Looks good

#### Photos:



### MEC-I-2(M)

#### Location Details:

Created: 2019-06-21 by Kevin Hoffman  
Updated: 2023-07-07 by Hayden Dallmeyer  
Location: 29.593570, -98.474433  
Status: Inlet  
Feature Type: Inlet  
Feature Name: MEC-I-2(M)  
Feature ID: 10080

#### Inspection Details:

Inspection Date: 2023-07-07  
Inspector: Jensen Altom  
Field Inspection:  
 No Maintenance Required  
 Needs Maintenance  
 Illicit Discharge

Field Notes: Good condition

#### Photos:



## Midas Inlet In Rear

### Location Details:

Created: 2019-06-26 by Jamie Taylor  
Updated: 2023-07-07 by Kevin Hunt  
Location: 29.591877, -98.474520  
Status: Inlet  
Feature Type: Inlet  
Feature Name: Midas Inlet In Rear  
Feature ID: 10015

### Inspection Details:

Inspection Date: 2023-07-07  
Inspector: Cade Wenberg  
Field Inspection:  
 No Maintenance Required  
 Needs Maintenance  
 Illicit Discharge

Field Notes: Good condition

### Photos:



## Miner Fleet Parking Lot Inlet

### Location Details:

Created: 2019-11-21 by Jamie Taylor  
Updated: 2023-07-07 by Kevin Hunt  
Location: 29.601184, -98.473009  
Status: Inlet  
Feature Type: Inlet  
Feature Name: Miner Fleet Parking Lot Inlet  
Feature ID: 10045

### Inspection Details:

Inspection Date: 2023-07-07  
Inspector: Cade Wenberg  
Field Inspection:  
 No Maintenance Required  
 Needs Maintenance  
 Illicit Discharge

Field Notes: Looks good

### Photos:



### Miner Fleet PCD

#### Location Details:

Created: 2019-06-21 by Kevin Hoffman  
Updated: 2023-07-07 by Hayden Dallmeyer  
Location: 29.600847, -98.472910  
Status: BMP  
Feature Type: BMP  
Feature Name: Miner Fleet PCD  
Feature ID: 10043

#### Inspection Details:

Inspection Date: 2023-07-07  
Inspector: Jensen Altom  
Field Inspection:

- No Maintenance Required
- Needs Maintenance
- Illicit Discharge

Field Notes: Clear out debris and vegetation. Filters look good. Pipe is clear.

#### Photos:



## Minor Sediment

### Location Details:

Created: 2022-07-21 by Kevin Hunt  
Updated: 2023-07-07 by Hayden Dallmeyer  
Location: 29.601176, -98.473128  
Status: Other  
Feature Type: Other  
Feature Name: Minor sediment  
Feature ID: 10932

### Inspection Details:

Inspection Date: 2023-07-07  
Inspector: Jensen Altom  
Field Inspection:  
 No Maintenance Required  
 Needs Maintenance  
 Illicit Discharge

Field Notes: Clear Sediment

### Photos:



## Monarch Trophy PCD

### Location Details:

Created: 2019-06-21 by Kevin Hoffman  
Updated: 2023-07-07 by Hayden Dallmeyer  
Location: 29.590797, -98.475760  
Status: BMP  
Feature Type: BMP  
Feature Name: Monarch Trophy PCD  
Feature ID: 10005

### Inspection Details:

Inspection Date: 2023-07-07  
Inspector: Jensen Altom  
Field Inspection:  
 No Maintenance Required  
 Needs Maintenance  
 Illicit Discharge

Field Notes: Clear vegetation and debris

### Photos:



## Monarchy Trophy Swale

### Location Details:

Created: 2019-06-21 by Kevin Hoffman  
Updated: 2023-07-07 by Hayden Dallmeyer  
Location: 29.591094, -98.474776  
Status: BMP  
Feature Type: BMP  
Feature Name: Monarch Trophy Swale  
Feature ID: 10012

### Inspection Details:

Inspection Date: 2023-07-07  
Inspector: Jensen Altom  
Field Inspection:  No Maintenance Required  
 Needs Maintenance  
 Illicit Discharge

Field Notes: In good condition

### Photos:



## Mustang Circle

### Location Details:

Created: 2019-06-21 by Kevin Hoffman  
Updated: 2023-07-06 by Kevin Hunt  
Location: 29.602145, -98.480414  
Status: Outfall  
Feature Type: Outfall  
Feature Name: Mustang Circle  
Feature ID: 10037

### Inspection Details:

Inspection Date: 2023-07-06  
Inspector: Cade Wenberg  
Field Inspection:  
 No Maintenance Required  
 Needs Maintenance  
 Illicit Discharge

Field Notes: Clear channel of tall vegetation and debris. Otherwise good.

### Photos:



## Navato Blvd Inlet

### Location Details:

Created: 2019-07-09 by Jamie Taylor  
Updated: 2023-07-07 by Kevin Hunt  
Location: 29.589509, -98.478540  
Status: Inlet  
Feature Type: Inlet  
Feature Name: Navato Blvd Inlet  
Feature ID: 10063

### Inspection Details:

Inspection Date: 2023-07-07  
Inspector: Cade Wenberg  
Field Inspection:  
 No Maintenance Required  
 Needs Maintenance  
 Illicit Discharge

Field Notes: Clean leaves and cut tree

### Photos:



## New Drash Parking Lot Box Inlet

### Location Details:

Created: 2019-06-26 by Jamie Taylor  
Updated: 2023-07-07 by Kevin Hunt  
Location: 29.591729, -98.475521  
Status: Inlet  
Feature Type: Inlet  
Feature Name: New Drash Parking Lot Box Inlet  
Feature ID: 10009

### Inspection Details:

Inspection Date: 2023-07-07  
Inspector: Cade Wenberg  
Field Inspection:  
 No Maintenance Required  
 Needs Maintenance  
 Illicit Discharge

Field Notes: Clear debris

### Photos:



## North Oak Crossing

### Location Details:

Created: 2019-06-21 by Kevin Hoffman  
Updated: 2023-07-06 by Hayden Dallmeyer  
Location: 29.607261, -98.487769  
Status: Pipe  
Feature Type: Pipe  
Feature Name: North Oak Crossing  
Feature ID: 10651

### Inspection Details:

Inspection Date: 2023-07-06  
Inspector: Jensen Altom  
Field Inspection:  
 No Maintenance Required  
 Needs Maintenance  
 Illicit Discharge

### Photos:



Field Notes: Clear vegetation out of culvert.



## North Oak Outfall

### Location Details:

Created: 2019-06-21 by Kevin Hoffman  
Updated: 2023-07-06 by Hayden Dallmeyer  
Location: 29.607314, -98.487046  
Status: Outfall  
Feature Type: Outfall  
Feature Name: North Oak Outfall  
Feature ID: 10042

### Inspection Details:

Inspection Date: 2023-07-06  
Inspector: Jensen Altom  
Field Inspection:  
 No Maintenance Required  
 Needs Maintenance  
 Illicit Discharge

Field Notes: Good condition

### Photos:



## North Oak Private Crossing East

### Location Details:

Created: 2019-06-21 by Kevin Hoffman  
Updated: 2023-07-06 by Kevin Hunt  
Location: 29.607383, -98.487986  
Status: Pipe  
Feature Type: Pipe  
Feature Name: North Oak Private Crossing East  
Feature ID: 10652

### Inspection Details:

Inspection Date: 2023-07-06  
Inspector: Cade Wenberg  
Field Inspection:  No Maintenance Required  
 Needs Maintenance  
 Illicit Discharge

Field Notes: Good

### Photos:



## North Oak Private Crossing West

### Location Details:

Created: 2019-06-21 by Kevin Hoffman  
Updated: 2023-07-06 by Hayden Dallmeyer  
Location: 29.607324, -98.488624  
Status: Pipe  
Feature Type: Pipe  
Feature Name: North Oak Private Crossing West  
Feature ID: 10650

### Inspection Details:

Inspection Date: 2023-07-06  
Inspector: Jensen Altom  
Field Inspection:  No Maintenance Required  
 Needs Maintenance  
 Illicit Discharge

Field Notes: Good condition

### Photos:



## Oak Creek Circle Channel

### Location Details:

Created: 2019-06-21 by Kevin Hoffman  
Updated: 2023-07-07 by Hayden Dallmeyer  
Location: 29.591749, -98.474606  
Status: Outfall  
Feature Type: Outfall  
Feature Name: Oak Creek Circle Channel  
Feature ID: 10017

### Inspection Details:

Inspection Date: 2023-07-07  
Inspector: Jensen Altom  
Field Inspection:  
 No Maintenance Required  
 Needs Maintenance  
 Illicit Discharge

Field Notes: Clear debris

### Photos:



## Oak Creek Circle Inlet

### Location Details:

Created: 2019-06-21 by Kevin Hoffman  
Updated: 2023-07-07 by Kevin Hunt  
Location: 29.591150, -98.475654  
Status: Inlet  
Feature Type: Inlet  
Feature Name: Oak Creek Circle Inlet  
Feature ID: 10010

### Inspection Details:

Inspection Date: 2023-07-07  
Inspector: Cade Wenberg  
Field Inspection:  
 No Maintenance Required  
 Needs Maintenance  
 Illicit Discharge

Field Notes: Clear out debris

### Photos:



## Oak Creek Circle Storm Sewer Pipe

### Location Details:

Created: 2019-06-21 by Kevin Hoffman  
Updated: 2023-07-07 by Kevin Hunt  
Location: 29.591205, -98.474802  
Status: Pipe  
Feature Type: Pipe  
Feature Name: Oak Creek Circle Storm Sewer Pipe  
Feature ID: 10667

### Inspection Details:

Inspection Date: 2023-07-07  
Inspector: Cade Wenberg  
Field Inspection:  
 No Maintenance Required  
 Needs Maintenance  
 Illicit Discharge

Field Notes: Clear debris buildup

### Photos:



### OAK-I-1 (M)

#### Location Details:

Created: 2019-06-21 by Kevin Hoffman  
Updated: 2023-07-07 by Kevin Hunt  
Location: 29.591141, -98.474824  
Status: Inlet  
Feature Type: Inlet  
Feature Name: OAK-I-1 (M)  
Feature ID: 10014

Photos:



#### Inspection Details:

Inspection Date: 2023-07-07  
Inspector: Cade Wenberg  
Field Inspection:  
 No Maintenance Required  
 Needs Maintenance  
 Illicit Discharge  
Field Notes: Good condition

### OAK-I-2 (M)

#### Location Details:

Created: 2019-06-21 by Kevin Hoffman  
Updated: 2023-07-07 by Hayden Dallmeyer  
Location: 29.591267, -98.474778  
Status: Inlet  
Feature Type: Inlet  
Feature Name: OAK-I-2 (M)  
Feature ID: 10013

Photos:

#### Inspection Details:

Inspection Date: 2023-07-07  
Inspector: Jensen Altom  
Field Inspection:  
 No Maintenance Required  
 Needs Maintenance  
 Illicit Discharge

Field Notes: In good condition



## Optometrist Roundabout PCD

### Location Details:

Created: 2019-06-21 by Kevin Hoffman  
Updated: 2023-07-07 by Kevin Hunt  
Location: 29.595278, -98.474079  
Status: BMP  
Feature Type: BMP  
Feature Name: Optometrist Roundabout PCD  
Feature ID: 10021

Photos:

### Inspection Details:

Inspection Date: 2023-07-07  
Inspector: Cade Wenberg  
Field Inspection:  No Maintenance Required  
 Needs Maintenance  
 Illicit Discharge

Field Notes: Looks good



## Parking Lot Box Inlet

### Location Details:

Created: 2019-11-21 by Jamie Taylor  
Updated: 2023-07-07 by Hayden Dallmeyer  
Location: 29.595682, -98.474413  
Status: Inlet  
Feature Type: Inlet  
Feature Name: Parking Lot Box Inlet  
Feature ID: 10006

### Inspection Details:

Inspection Date: 2023-07-07  
Inspector: Jensen Altom  
Field Inspection:  
 No Maintenance Required  
 Needs Maintenance  
 Illicit Discharge

Field Notes: Clean and in good condition

### Photos:



## Pantheon Commercial Strip PCD

### Location Details:

Created: 2019-06-21 by Kevin Hoffman  
Updated: 2023-07-07 by Hayden Dallmeyer  
Location: 29.595682, -98.474413  
Status: BMP  
Feature Type: BMP  
Feature Name: Pantheon Commercial Strip PCD  
Feature ID: 10064

### Inspection Details:

Inspection Date: 2023-07-07  
Inspector: Jensen Altom  
Field Inspection:  No Maintenance Required  
 Needs Maintenance  
 Illicit Discharge

### Photos:



Field Notes: In good condition

## Park Oak Outfall

### Location Details:

Created: 2019-06-21 by Kevin Hoffman  
Updated: 2023-07-06 by Kevin Hunt  
Location: 29.606362, -98.487024  
Status: Outfall  
Feature Type: Outfall  
Feature Name: Park Oak Outfall  
Feature ID: 10041

### Inspection Details:

Inspection Date: 2023-07-06  
Inspector: Other  
Field Inspection:  No Maintenance Required  
 Needs Maintenance  
 Illicit Discharge

### Photos:



Field Notes: Trim vegetation and clean light debris



## Paseo Canada Outfall 1

### Location Details:

Created: 2019-06-26 by Jamie Taylor  
Updated: 2023-07-06 by Kevin Hunt  
Location: 29.607085, -98.490131  
Status: Outfall  
Feature Type: Outfall  
Feature Name: Paseo Canada Outfall 1  
Feature ID: 10049

### Inspection Details:

Inspection Date: 2023-07-06  
Inspector: Cade Wenberg  
Field Inspection:  No Maintenance Required  
 Needs Maintenance  
 Illicit Discharge

### Photos:



### Field Notes:

Pretty clean



## Paseo Canada Outfall 2

### Location Details:

Created: 2019-06-21 by Kevin Hoffman  
Updated: 2023-07-06 by Hayden Dallmeyer  
Location: 29.606516, -98.495060  
Status: Outfall  
Feature Type: Outfall  
Feature Name: Paseo Canada Outfall 2  
Feature ID: 10048

Photos:

### Inspection Details:

Inspection Date: 2023-07-06  
Inspector: Jensen Altom  
Field Inspection:  
 No Maintenance Required  
 Needs Maintenance  
 Illicit Discharge

Field Notes: Clear weeds and trash



## Paseo Canada UG Pipe

### Location Details:

Created: 2019-06-21 by Kevin Hoffman  
Updated: 2023-07-06 by Kevin Hunt  
Location: 29.606947, -98.491161  
Status: Pipe  
Feature Type: Pipe  
Feature Name: Paseo Canada UG Pipe  
Feature ID: 10902

Photos:

### Inspection Details:

Inspection Date: 2023-07-06  
Inspector: Cade Wenberg  
Field Inspection:  
 No Maintenance Required  
 Needs Maintenance  
 Illicit Discharge

Field Notes: Underground

## PCD2 Pediatrics

### Location Details:

Created: 2019-11-20 by Jamie Taylor  
Updated: 2023-07-07 by Kevin Hunt  
Location: 29.598282, -98.472416  
Status: BMP  
Feature Type: BMP  
Feature Name: PCD2 Pediatrics  
Feature ID: 10057

### Inspection Details:

Inspection Date: 2023-07-07  
Inspector: Cade Wenberg  
Field Inspection:  No Maintenance Required  
 Needs Maintenance  
 Illicit Discharge

Field Notes: Clean debris and lock gate

### Photos:



## Pediatric Dentistry Office PCD

### Location Details:

Created: 2019-06-21 by Kevin Hoffman  
Updated: 2023-07-07 by Hayden Dallmeyer  
Location: 29.598186, -98.472159  
Status: BMP  
Feature Type: BMP  
Feature Name: Pediatric Dentistry Office PCD  
Feature ID: 10066

### Inspection Details:

Inspection Date: 2023-07-07  
Inspector: Jensen Altom  
Field Inspection:  No Maintenance Required  
 Needs Maintenance  
 Illicit Discharge

### Photos:



Field Notes: Clean pipe out

## Permeable Pavers

### Location Details:

Created: 2019-11-20 by Jamie Taylor  
Updated: 2023-07-07 by Hayden Dallmeyer  
Location: 29.599329, -98.500232  
Status: BMP  
Feature Type: BMP  
Feature Name: Permeable Pavers  
Feature ID: 10058

Photos:

### Inspection Details:

Inspection Date: 2023-07-07  
Inspector: Jensen Altom  
Field Inspection:

- No Maintenance Required
- Needs Maintenance
- Illicit Discharge

Field Notes: Clean and in good condition



## Premier 1 Autocare Inlet 1

### Location Details:

Created: 2019-06-26 by Jamie Taylor  
Updated: 2023-07-07 by Hayden Dallmeyer  
Location: 29.592386, -98.473754  
Status: Inlet  
Feature Type: Inlet  
Feature Name: Premier 1 Autocare Inlet 1  
Feature ID: 10020

Photos:

### Inspection Details:

Inspection Date: 2023-07-07  
Inspector: Jensen Altom  
Field Inspection:  
 No Maintenance Required  
 Needs Maintenance  
 Illicit Discharge

Field Notes: In good condition



## Premier 1 Autocare Inlet 2

### Location Details:

Created: 2019-06-26 by Jamie Taylor  
Updated: 2023-07-07 by Kevin Hunt  
Location: 29.592498, -98.473719  
Status: Inlet  
Feature Type: Inlet  
Feature Name: Premier 1 Autocare Inlet 2  
Feature ID: 10019

Photos:

### Inspection Details:

Inspection Date: 2023-07-07  
Inspector: Cade Wenberg  
Field Inspection:  No Maintenance Required  
 Needs Maintenance  
 Illicit Discharge

Field Notes: Good condition



## Public Storage Outfall

### Location Details:

Created: 2019-06-21 by Kevin Hoffman  
Updated: 2023-07-07 by Hayden Dallmeyer  
Location: 29.594819, -98.474380  
Status: Outfall  
Feature Type: Outfall  
Feature Name: Public Storage Outfall  
Feature ID: 10068

### Inspection Details:

Inspection Date: 2023-07-07  
Inspector: Jensen Altom  
Field Inspection:  
 No Maintenance Required  
 Needs Maintenance  
 Illicit Discharge

Field Notes: Clear vegetation

### Photos:



## Residential Drainpipe

### Location Details:

Created: 2021-07-01 by Kevin Hunt  
Updated: 2023-07-06 by Hayden Dallmeyer  
Location: 29.602656, -98.478914  
Status: Other  
Feature Type: Other  
Feature Name: Residential Drainpipe  
Feature ID: 10912

Photos:

### Inspection Details:

Inspection Date: 2023-07-06  
Inspector: Jensen Altom  
Field Inspection:  
 No Maintenance Required  
 Needs Maintenance  
 Illicit Discharge

Field Notes: Pipe is capped, no longer an issue



## Retention Pond with Infiltration

### Location Details:

Created: 2019-06-26 by Jamie Taylor  
Updated: 2023-07-07 by Hayden Dallmeyer  
Location: 29.590115, -98.477304  
Status: Pond  
Feature Type: Pond  
Feature Name: Retention Pond with Infiltration  
Feature ID: 10071

Photos:



### Inspection Details:

Inspection Date: 2023-07-07  
Inspector: Jensen Altom  
Field Inspection:

- No Maintenance Required
- Needs Maintenance
- Illicit Discharge

Field Notes: Clear debris and vegetation

## Ridge Trail Crossing

### Location Details:

Created: 2019-06-21 by Kevin Hoffman  
Updated: 2023-07-06 by Hayden Dallmeyer  
Location: 29.607191, -98.475998  
Status: Pipe  
Feature Type: Pipe  
Feature Name: Ridge Trail Crossing  
Feature ID: 10649

### Inspection Details:

Inspection Date: 2023-07-06  
Inspector: Jensen Altom  
Field Inspection:  No Maintenance Required  
 Needs Maintenance  
 Illicit Discharge

### Photos:



Field Notes: Pipes and vegetation in good condition



## Rua De Matta Street Channel Outflow

### Location Details:

Created: 2019-06-21 by Kevin Hoffman  
Updated: 2023-07-06 by Hayden Dallmeyer  
Location: 29.600983, -98.487902  
Status: Outfall  
Feature Type: Outfall  
Feature Name: Rua De Matta Street Channel Outflow  
Feature ID: 10036

### Inspection Details:

Inspection Date: 2023-07-06  
Inspector: Jensen Altom  
Field Inspection:  
 No Maintenance Required  
 Needs Maintenance  
 Illicit Discharge

### Photos:



Field Notes: Trim vegetation to fence line to allow flow

## Rua De Matta

### Location Details:

Created: 2019-06-21 by Kevin Hoffman  
Updated: 2023-07-06 by Hayden Dallmeyer  
Location: 29.607191, -98.475998  
Status: Outfall  
Feature Type: Outfall  
Feature Name: Rua De Matta  
Feature ID: 10047

### Inspection Details:

Inspection Date: 2023-07-06  
Inspector: Jensen Altom  
Field Inspection:  
 No Maintenance Required  
 Needs Maintenance  
 Illicit Discharge

Field Notes: Good condition

### Photos:



## Sagecrest Crossing East

### Location Details:

Created: 2019-06-21 by Kevin Hoffman  
Updated: 2023-07-06 by Kevin Hunt  
Location: 29.605272, -98.477459  
Status: Pipe  
Feature Type: Pipe  
Feature Name: Sagecrest Crossing East  
Feature ID: 10661

### Inspection Details:

Inspection Date: 2023-07-06  
Inspector: Cade Wenberg  
Field Inspection:  No Maintenance Required  
 Needs Maintenance  
 Illicit Discharge

### Photos:



### Field Notes: Trim vegetation



## Sagecrest Crossing West

### Location Details:

Created: 2019-06-21 by Kevin Hoffman  
Updated: 2023-07-06 by Hayden Dallmeyer  
Location: 29.604886, -98.482318  
Status: Pipe  
Feature Type: Pipe  
Feature Name: Sagecrest Crossing West  
Feature ID: 10663

### Inspection Details:

Inspection Date: 2023-07-06  
Inspector: Jensen Altom  
Field Inspection:  
 No Maintenance Required  
 Needs Maintenance  
 Illicit Discharge

### Photos:



Field Notes: Pipes look good. Vegetation needs to be mowed down.



## Sediment buildup at Tall Oak

### Location Details:

Created: 2021-12-16 by Maria Aguilar  
Updated: 2023-07-06 by Hayden Dallmeyer  
Location: 29.602765, -98.479158  
Status: Other  
Feature Type: Other  
Feature Name: Sediment Buildup at Tall Oak  
Feature ID: 10913

Photos:

### Inspection Details:

Inspection Date: 2023-07-06  
Inspector: Jensen Altom  
Field Inspection:  
 No Maintenance Required  
 Needs Maintenance  
 Illicit Discharge

Field Notes: Clear sediment



## Sediment Buildup in Street

### Location Details:

Created: 2019-11-21 by Jamie Taylor  
Updated: 2023-07-06 by Kevin Hunt  
Location: 29.605122, -98.483209  
Status: Other  
Feature Type: Other  
Feature Name: Sediment Buildup in Street  
Feature ID: 10040

### Inspection Details:

Inspection Date: 2023-07-06  
Inspector: Cade Wenberg  
Field Inspection:  
 No Maintenance Required  
 Needs Maintenance  
 Illicit Discharge

Field Notes: Clear large pile of leaves

### Photos:



## Sediment Near Marriott Global

### Location Details:

Created: 2022-07-21 by Kevin Hunt  
Updated: 2023-07-07 by Hayden Dallmeyer  
Location: 29.599951, -98.474556  
Status: Other  
Feature Type: Other  
Feature Name: Sediment near Marriott Global  
Feature ID: 10923

### Inspection Details:

Inspection Date: 2023-07-07  
Inspector: Jensen Altom  
Field Inspection:  
 No Maintenance Required  
 Needs Maintenance  
 Illicit Discharge

Field Notes: Clear sediment

### Photos:



## Sediment

### Location Details:

Created: 2019-11-21 by Jamie Taylor  
Updated: 2023-07-07 by Hayden Dallmeyer  
Location: 29.596028, -98.475549  
Status: Other  
Feature Type: Other  
Feature Name: Sediment  
Feature ID: 10032

### Inspection Details:

Inspection Date: 2023-07-07  
Inspector: Jensen Altom  
Field Inspection:  
 No Maintenance Required  
 Needs Maintenance  
 Illicit Discharge

Field Notes: Clear sediment

### Photos:



## Service King Collision Repair Extended Parking Lot PCD

### Location Details:

Created: 2019-06-21 by Kevin Hoffman  
Updated: 2023-07-07 by Hayden Dallmeyer  
Location: 29.590678, -98.475727  
Status: BMP  
Feature Type: BMP  
Feature Name: Service King Collision Repair Extended Parking Lot PCD  
Feature ID: 10003

### Inspection Details:

Inspection Date: 2023-07-07  
Inspector: Jensen Altom  
Field Inspection:

- No Maintenance Required
- Needs Maintenance
- Illicit Discharge

Field Notes: Clear rocks from opening of pipe, Rocks on and around pipe are okay.

### Photos:



## Service King Collision Repair PCD

### Location Details:

Created: 2019-06-21 by Kevin Hoffman  
Updated: 2023-07-07 by Kevin Hunt  
Location: 29.590749, -98.475435  
Status: BMP  
Feature Type: BMP  
Feature Name: Service King Collision Repair PCD  
Feature ID: 10072

### Inspection Details:

Inspection Date: 2023-07-07  
Inspector: Cade Wenberg  
Field Inspection:  No Maintenance Required  
 Needs Maintenance  
 Illicit Discharge

### Photos:



Field Notes: Clean out all trash and debris

## Shady Trails Rundown

### Location Details:

Created: 2020-07-31 by Kevin Hunt  
Updated: 2023-07-06 by Kevin Hunt  
Location: 29.606344, -98.477445  
Status: Outfall  
Feature Type: Outfall  
Feature Name: Shady Trails Rundown  
Feature ID: 10910

### Inspection Details:

Inspection Date: 2023-07-06  
Inspector: Cade Wenberg  
Field Inspection:  
 No Maintenance Required  
 Needs Maintenance  
 Illicit Discharge

### Photos:



Field Notes: Trim vegetation, cutback bush, remove pile of leaves



## Spillway Structure

### Location Details:

Created: 2019-11-21 by Jamie Taylor  
Updated: 2023-07-07 by Hayden Dallmeyer  
Location: 29.596295, -98.476181  
Status: Skimmer/Weir  
Feature Type: Skimmer/Weir  
Feature Name: Spillway Structure  
Feature ID: 10030

### Inspection Details:

Inspection Date: 2023-07-07  
Inspector: Jensen Altom  
Field Inspection:  No Maintenance Required  
 Needs Maintenance  
 Illicit Discharge

Field Notes: Monitor Erosion

### Photos:



## Sterling Browning Crossing

### Location Details:

Created: 2019-06-21 by Kevin Hoffman  
Updated: 2023-07-06 by Kevin Hunt  
Location: 29.607363, -98.489097  
Status: Pipe  
Feature Type: Pipe  
Feature Name: Sterling Browning Crossing  
Feature ID: 10653

### Inspection Details:

Inspection Date: 2023-07-06  
Inspector: Cade Wenberg  
Field Inspection:  
 No Maintenance Required  
 Needs Maintenance  
 Illicit Discharge

Field Notes: Clear large rocks from inside of culverts, otherwise pretty clean.

### Photos:



## Stream Gauge

### Location Details:

Created: 2019-11-21 by Jamie Taylor  
Updated: 2023-07-07 by Kevin Hunt  
Location: 29.594942, -98.475440  
Status: Inlet  
Feature Type: Inlet  
Feature Name: Stream Gauge  
Feature ID: 10906

### Inspection Details:

Inspection Date: 2023-07-07  
Inspector: Cade Wenberg  
Field Inspection:  No Maintenance Required  
 Needs Maintenance  
 Illicit Discharge

### Photos:



Field Notes: Clear vegetation and soil in grate



## Street Outlet, 1

### Location Details:

Created: 2019-11-20 by Jamie Taylor  
Updated: 2023-07-07 by Kevin Hunt  
Location: 29.589912, -98.479039  
Status: Outfall  
Feature Type: Outfall  
Feature Name: Street Outlet  
Feature ID: 10907

Photos:

### Inspection Details:

Inspection Date: 2023-07-07  
Inspector: Cade Wenberg  
Field Inspection:  No Maintenance Required  
 Needs Maintenance  
 Illicit Discharge

Field Notes: Good condition



## Tall Oak Outfall

### Location Details:

Created: 2019-06-21 by Kevin Hoffman  
Updated: 2023-07-06 by Kevin Hunt  
Location: 29.602541, -98.478853  
Status: Outfall  
Feature Type: Outfall  
Feature Name: Tall Oak Outfall  
Feature ID: 10002

Photos:

### Inspection Details:

Inspection Date: 2023-07-06  
Inspector: Cade Wenberg  
Field Inspection:  
 No Maintenance Required  
 Needs Maintenance  
 Illicit Discharge

Field Notes: vegetation good.



## Texas Roadhouse

### Location Details:

Created: 2019-11-20 by Jamie Taylor  
Updated: 2023-07-07 by Kevin Hunt  
Location: 29.596238, -98.472831  
Status: Inlet  
Feature Type: Inlet  
Feature Name: Texas Roadhouse  
Feature ID: 10055

### Photos:



### Inspection Details:

Inspection Date: 2023-07-07  
Inspector: Cade Wenberg  
Field Inspection:  
 No Maintenance Required  
 Needs Maintenance  
 Illicit Discharge

Field Notes: Clear debris and trash near back of channel

## Tiger Tail Outfall

### Location Details:

Created: 2019-06-21 by Kevin Hoffman  
Updated: 2023-07-06 by Hayden Dallmeyer  
Location: 29.600490, -98.477783  
Status: Outfall  
Feature Type: Outfall  
Feature Name: Tiger Tail Outfall  
Feature ID: 10074

### Photos:



### Inspection Details:

Inspection Date: 2023-07-06  
Inspector: Jensen Altom  
Field Inspection:  No Maintenance Required  
 Needs Maintenance  
 Illicit Discharge

Field Notes: Good condition



## Trash

### Location Details:

Created: 2023-07-07 by Kevin Hunt  
Updated: 2023-07-07 by Kevin Hunt  
Location: 29.594540, -98.473955  
Status: Other  
Feature Type: Other  
Feature Name: Trash  
Feature ID: 10934

Photos:

### Inspection Details:

Inspection Date: 2023-07-07  
Inspector: Cade Wenberg  
Field Inspection:  
 No Maintenance Required  
 Needs Maintenance  
 Illicit Discharge

Field Notes: Pile of trash and furniture next to Mecca Inlets Outfall.

## TxDOT at Lorence Creek

### Location Details:

Created: 2019-06-21 by Kevin Hoffman  
Updated: 2023-07-07 by Hayden Dallmeyer  
Location: 29.594381, -98.473226  
Status: Outfall  
Feature Type: Outfall  
Feature Name: TxDOT at Lorence Creek  
Feature ID: 10067

Photos:



### Inspection Details:

Inspection Date: 2023-07-07  
Inspector: Jensen Altom  
Field Inspection:  No Maintenance Required  
 Needs Maintenance  
 Illicit Discharge

Field Notes: Clear trash and vegetation

## Unknown Residential Drain Pipe into MS4 System

### Location Details:

Created: 2019-10-29 by Jamie Taylor  
Updated: 2023-07-06 by Kevin Hunt  
Location: 29.599275, -98.474509  
Status: Pipe  
Feature Type: Pipe  
Feature Name: Unknown Residential Pipe in MS4 System  
Feature ID: 10001

Photos:

### Inspection Details:

Inspection Date: 2023-07-06  
Inspector: Cade Wenberg  
Field Inspection:  No Maintenance Required  
 Needs Maintenance  
 Illicit Discharge

Field Notes: In good condition



## Valvoline PCD

### Location Details:

Created: 2019-06-21 by Kevin Hoffman  
Updated: 2023-07-07 by Hayden Dallmeyer  
Location: 29.591517, -98.474602  
Status: BMP  
Feature Type: BMP  
Feature Name: Valvoline PCD  
Feature ID: 10018

### Inspection Details:

Inspection Date: 2023-07-07  
Inspector: Jensen Altom  
Field Inspection:  
 No Maintenance Required  
 Needs Maintenance  
 Illicit Discharge

### Photos:



Field Notes: Remove debris and vegetation. Close lid.



## Varco

### Location Details:

Created: 2019-11-20 by Jamie Taylor  
Updated: 2023-07-07 by Hayden Dallmeyer  
Location: 29.597590, -98.472356  
Status: Inlet  
Feature Type: Inlet  
Feature Name: Varco  
Feature ID: 10023

### Inspection Details:

Inspection Date: 2023-07-07  
Inspector: Jensen Altom  
Field Inspection:  No Maintenance Required  
 Needs Maintenance  
 Illicit Discharge

Field Notes: In good condition

### Photos:



## Varco 2

### Location Details:

Created: 2019-11-20 by Jamie Taylor  
Updated: 2023-07-07 by Kevin Hunt  
Location: 29.597873, -98.473644  
Status: Inlet  
Feature Type: Inlet  
Feature Name: Varco 2  
Feature ID: 10022  
Photos:



### Inspection Details:

Inspection Date: 2023-07-07  
Inspector: Cade Wenberg  
Field Inspection:  
 No Maintenance Required  
 Needs Maintenance  
 Illicit Discharge  
Field Notes: In good condition

## Voigt Grate Inlet

### Location Details:

Created: 2019-06-21 by Kevin Hoffman  
Updated: 2023-07-06 by Hayden Dallmeyer  
Location: 29.606857, -98.492291  
Status: Inlet  
Feature Type: Inlet  
Feature Name: Voigt Grate Inlet  
Feature ID: 10050

### Inspection Details:

Inspection Date: 2023-07-06  
Inspector: Jensen Altom  
Field Inspection:  
 No Maintenance Required  
 Needs Maintenance  
 Illicit Discharge

Field Notes: Grate in good condition

### Photos:



## Voigt Park Inlet

### Location Details:

Created: 2019-06-26 by Jamie Taylor  
Updated: 2023-07-07 by Kevin Hunt  
Location: 29.599626, -98.500509  
Status: Inlet  
Feature Type: Inlet  
Feature Name: Voigt Park Inlet  
Feature ID: 10086  
Photos:

### Inspection Details:

Inspection Date: 2023-07-07  
Inspector: Cade Wenberg  
Field Inspection:  
 No Maintenance Required  
 Needs Maintenance  
 Illicit Discharge

Field Notes: Clear off any mulch on top off inlets to fully expose them.



## Voigt Park Outfall Pipe

### Location Details:

Created: 2019-06-26 by Jamie Taylor  
Updated: 2023-07-07 by Hayden Dallmeyer  
Location: 29.599293, -98.501305  
Status: Outfall  
Feature Type: Outfall  
Feature Name: Voigt Park Outfall Pipe  
Feature ID: 10075

### Inspection Details:

Inspection Date: 2023-07-07  
Inspector: Jensen Altom  
Field Inspection:  No Maintenance Required  
 Needs Maintenance  
 Illicit Discharge

Field Notes: In good condition

### Photos:



## Voigt Park Outfall

### Location Details:

Created: 2019-06-21 by Kevin Hoffman  
Updated: 2023-07-07 by Kevin Hunt  
Location: 29.599268, -98.501332  
Status: Outfall  
Feature Type: Outfall  
Feature Name: Voigt Park Outfall  
Feature ID: 10076

### Inspection Details:

Inspection Date: 2023-07-07  
Inspector: Cade Wenberg  
Field Inspection:  
 No Maintenance Required  
 Needs Maintenance  
 Illicit Discharge

Field Notes: Clear trash and debris in and around pipe.

### Photos:



## Voigt Park Storm Sewer Outfall

### Location Details:

Created: 2019-06-21 by Kevin Hoffman  
Updated: 2023-07-07 by Hayden Dallmeyer  
Location: 29.599499, -98.500994  
Status: Outfall  
Feature Type: Outfall  
Feature Name: Voigt Park Storm Sewer Outfall  
Feature ID: 10073

### Inspection Details:

Inspection Date: 2023-07-07  
Inspector: Cade Wenberg  
Field Inspection:  No Maintenance Required  
 Needs Maintenance  
 Illicit Discharge

Field Notes: Clear and in good condition

### Photos:



## Voigt UG Pipe

### Location Details:

Created: 2019-06-21 by Kevin Hoffman  
Updated: 2023-07-06 by Hayden Dallmeyer  
Location: 29.607141, -98.492335  
Status: Pipe  
Feature Type: Pipe  
Feature Name: Voigt UG Pipe  
Feature ID: 10900

Photos:

### Inspection Details:

Inspection Date: 2023-07-06  
Inspector: Jensen Altom  
Field Inspection:  
 No Maintenance Required  
 Needs Maintenance  
 Illicit Discharge  
Field Notes: Underground

## William Classen Outfall

### Location Details:

Created: 2019-06-26 by Jamie Taylor  
Updated: 2023-07-06 by Kevin Hunt  
Location: 29.599870, -98.475263  
Status: Outfall  
Feature Type: Outfall  
Feature Name: William Classen Outfall  
Feature ID: 10025

### Inspection Details:

Inspection Date: 2023-07-06  
Inspector: Cade Wenberg  
Field Inspection:  
 No Maintenance Required  
 Needs Maintenance  
 Illicit Discharge

### Photos:



Field Notes: Trim vegetation so not in channel, otherwise good.

## Yosemite Crossing East

### Location Details:

Created: 2019-06-21 by Kevin Hoffman  
Updated: 2023-07-06 by Kevin Hunt  
Location: 29.604267, -98.477669  
Status: Pipe  
Feature Type: Pipe  
Feature Name: Yosemite Crossing East  
Feature ID: 10660

### Inspection Details:

Inspection Date: 2023-07-06  
Inspector: Cade Wenberg  
Field Inspection:  No Maintenance Required  
 Needs Maintenance  
 Illicit Discharge

Field Notes: Ensure water depth sign isn't obstructed. Everything else is good.

### Photos:



## Yosemite Crossing West

### Location Details:

Created: 2019-06-21 by Kevin Hoffman  
Updated: 2023-07-06 by Hayden Dallmeyer  
Location: 29.603892, -98.482024  
Status: Pipe  
Feature Type: Pipe  
Feature Name: Yosemite Crossing West  
Feature ID: 10662

### Inspection Details:

Inspection Date: 2023-07-06  
Inspector: Cade Wenberg  
Field Inspection:  No Maintenance Required  
 Needs Maintenance  
 Illicit Discharge

### Photos:



Field Notes: Pipes in good condition

