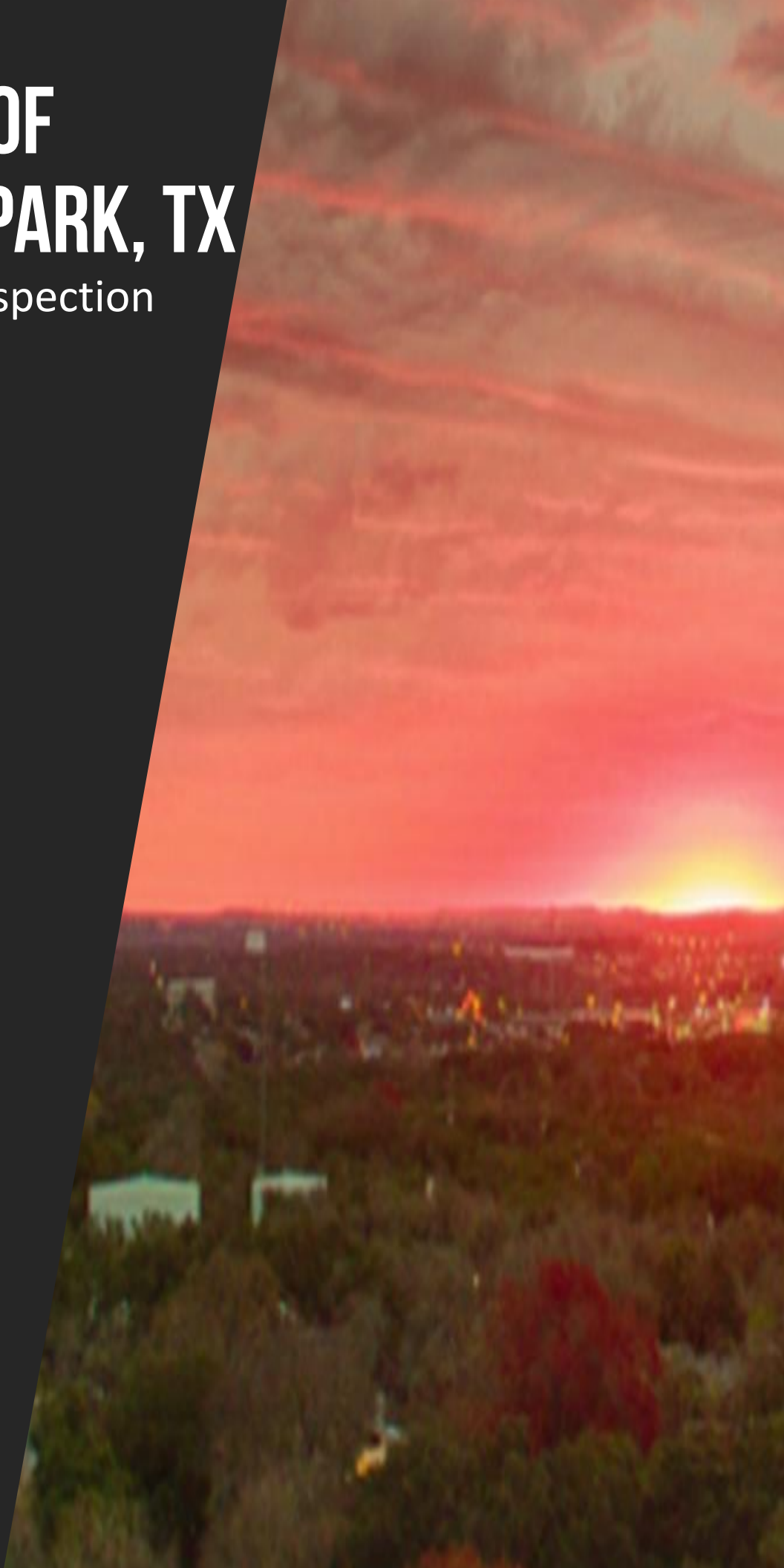


# TOWN OF HOLLYWOOD PARK, TX

2024 Winter Inspection





# HOLLYWOOD PARK 2024 WINTER INSPECTION REPORT

**To:** Frank Jaster, PE  
Senior Project Manager  
KCI Technologies Inc.  
2806 West Bitters Rd, Suite 218  
San Antonio, TX 78248

**From:** Daryl Spillmann  
Senior Project Engineer  
RESPEC  
84 NE Loop 410, Suite 100  
San Antonio, TX 78216

**Date:** November 22, 2024

**Subject:** Annual Municipal Separate Storm Sewer System (MS4) Inspection

Dear Mr. Jaster,

RESPEC, Inc performed the annual MS4 inspection on behalf of KCI Technologies, Inc (KCI) for the Town of Hollywood Park (Town) in compliance with Texas Commission on Environmental Quality (TCEQ) reporting requirements to investigate and record:

- / Operational status of stormwater features within the Town limit
- / Features requiring maintenance
- / Locations where illicit discharge is occurring and
- / Ensuring overall MS4 meets TCEQ requirements for reporting

Types of features inspected within the MS4 include but are not limited to: streets, storm drain inlets, culverts, basins, ponds, outfalls and LID features.

Drainage inlets were reviewed for storm drain medallions, which inform the public against illicit discharge into the MS4. Existing medallions were reviewed for damage and will be replaced as needed, and medallions will be installed on inlets without markings.

Stormwater features were inspected for trash, debris, excess vegetation, and damage were recorded as requiring maintenance. Drainage of some features was also evaluated and features with poor drainage were also recorded as requiring maintenance.

Illicit discharge, as defined by TCEQ as: "Any discharge to a municipal separate storm sewer that is not entirely composed of stormwater", was also recorded. It is recommended to prioritize resolving and addressing areas with illicit discharge.

84 NE LOOP 410, SUITE 100  
SAN ANTONIO, TX 78216  
210.570.5962  
TEXAS REGISTERED FIRM F-17502



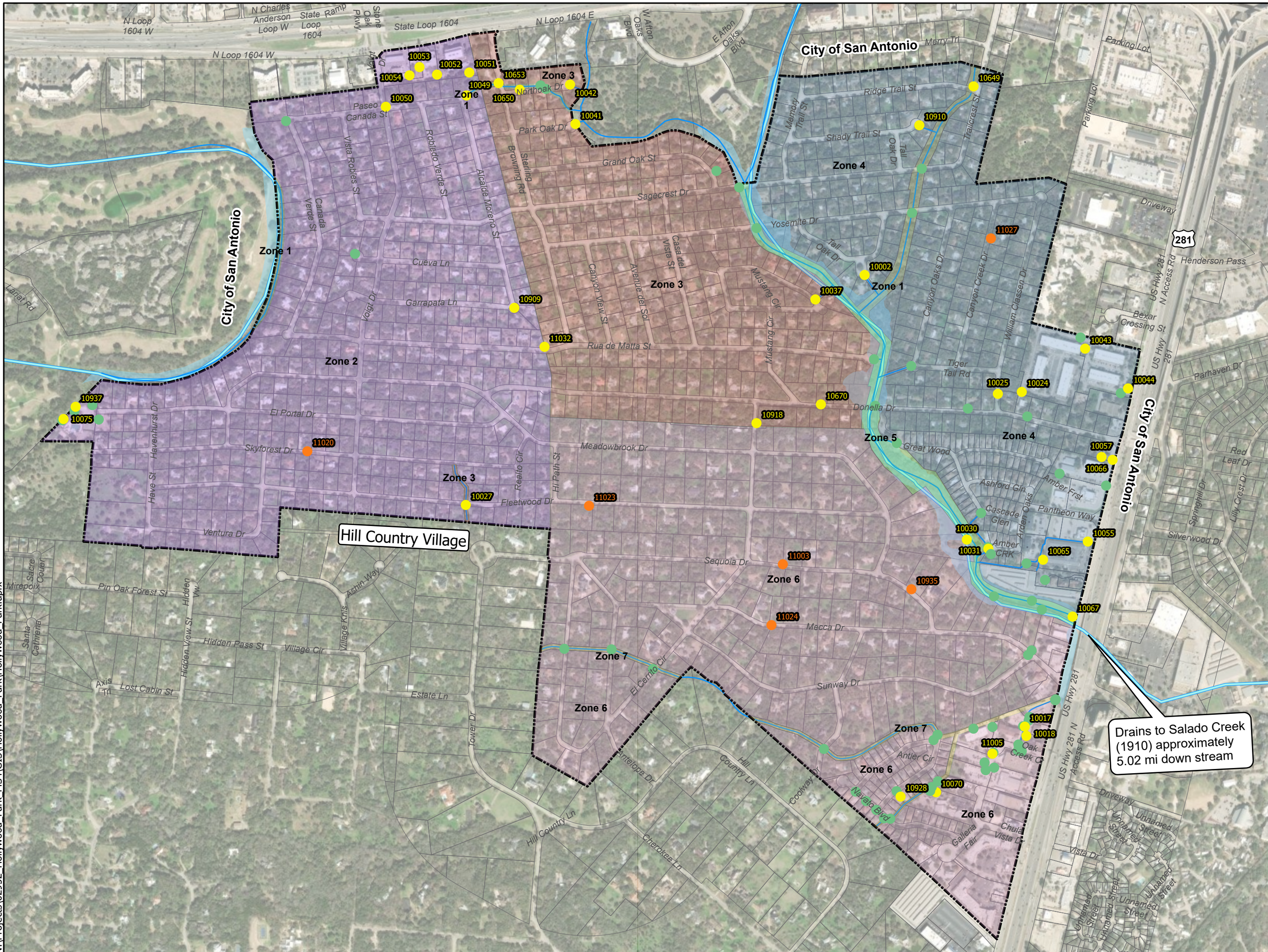
The table below summarizes the documented features inspected in the 2024 report cycle:

Feature Status	Number of Features	Inspection Date	Next Inspection
Maintenance Required	37	November 2024	Summer 2025
Construction Activity	6	November 2024	Summer 2025
Illicit Discharge	0	November 2024	Summer 2025

RESPEC has compiled a report of all 2024 stormwater inspection results containing:

- / Exhibit illustrating feature locations requiring action
- / Spreadsheet listing 2024 inspection records
- / Report outlining inspections, locations, and photos

N:\Projects\02952\_Hollywood\_Park\_MS4\GIS\Hollywood\_Park\Hollywood\_Park.aprx



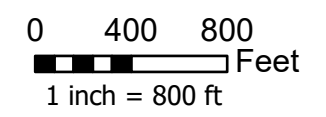
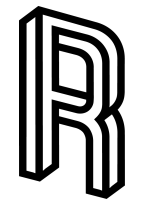
### Legend

- City Limits
- Drainage Channels
- Streams
- Parcels

### Status

- No Maintenance Required
- Needs Maintenance
- Construction Activity
- Illicit Discharge

### TOWN OF HOLLYWOOD PARK 2024 WINTER INSPECTION MAP



Drains to Salado Creek  
(1910) approximately  
5.02 mi down stream

### Drainage Features with Maintenance Required

Feature ID	Name	Feature	Maintenance
10031	Amber Creek Southern Outfall and Channel	Outfall	Downstream outfall silted out remove sediment for positive drainage. Clear litter and brush at upstream end
10928	Antler 1 Storm Sewer Pipe	Pipe	Looks good, clear surrounding vegetation
10065	Brookdale PCD	BMP	Culvert behind Brookdale needs silt remove for positive drainage.
10044	Chandler Signs PCD in North Park Corporate Center Parking Lot	BMP	Remove rocks and sediment from inlets and basins.
10070	Channel	Outfall	Neighbors complain of brush and hackberry tree over growing on downstream end of Navato Crossing causing intensive splashing during flood events. Channel has large leaf and sediment deposits. Needs thorough cleaning and trimming.
10051	Chicago Title PCD	BMP	Remove leaves by entry gate and in basin
10054	Corner Store PCD	BMP	Clean trash from inside pond, rake away debris and trim vegetation from fenceline.
10052	CRT Flooring Concepts PCD	BMP	Trim vines from fence and remove leaves from pond basin.
10670	Donella Culvert Crossing at Mustang Circle	Pipe	Remove leaves in front of inlet
10918	El Cerrito Cr Low Water Crossing	Other	Mow base of flood gauge
10053	Express Lube PCD	BMP	Clean trash at pond inlet and remove vegetation and debris from the back of pond basin.
10027	Fleetwood Outfall	Outfall	Remove sediment and branches near outfall.
10909	Garrapata Storm Water Inflow	Inlet	Remove sediment from road/entry and trim vegetation at channel entrance.
10024	Marriott Global Reservation PCD	BMP	Remove branch from fence and remove leaves and debris from basin.
10043	Miner Fleet PCD	BMP	Remove all debris and vegetation.
10037	Mustang Circle	Outfall	Remove vegetation at front to allow for flow and prevent stagnation.
10042	North Oak Outfall	Outfall	Trim vegetation and remove sediment from concrete.
10650	North Oak Private Crossing West	Pipe	Remove soil and vegetation blocking the outlets.
10017	Oak Creek Circle Channel	Outfall	Clear brush at downstream end
11005	Oak Creek Inlet-2	Inlet	Clear sediment buildup
10041	Park Oak Outfall	Outfall	Remove shrubs, trash, and logs from channel
10049	Paseo Canada Outfall 1	Outfall	Remove rocks and soil blocking outfall.
10057	PCD2 Pediatrics	BMP	Remove leaves from inlets and basin.
10066	Pediatric Dentistry Office PCD	BMP	Remove sediment buildup from pipe inlet and remove all debris and vegetation from basins.
10649	Ridge Trail Crossing	Pipe	Remove rocks from culvert outlet
11032	Rua De Matta Street Channel Outfall	Outfall	Remove debris from channel and trim vegetation from sides.
10910	Shady Trails Rundown	Outfall	Trim overgrown vegetation, otherwise looks good.
10030	Spillway Structure	Skimmer/ Weir	Weir structure is compromised, fill at upstream ends appears unchanged from summer inspection. Eastern end of weir structure severely under-minded. Not safe to walk on.
10653	Sterling Browning Crossing	Pipe	Remove rocks and branches from inlets.
10002	Tall Oak Outfall	Outfall	Remove sediment buildup.
10055	Texas Roadhouse	Inlet	Clean out sediment and litter in channel
10067	TXDOT at Lorence Creek	Outfall	Remove brush at culvert inlets
10050	Voigt Grate Inlet	Inlet	Remove trash on grate surface
10937	Voigt Park Outfall North	Outfall	Remove leaves and sediment from the front of outfall.
10075	Voigt Park Outfall Pipe	Outfall	Trim vegetation and regrade to prevent stagnation or backflow.
10025	William Classen Outfall	Outfall	Trim overgrown vegetation.

**Illicit Discharge**

Feature ID	Feature name/Location	Feature	Illicit Discharge
-	-	-	-

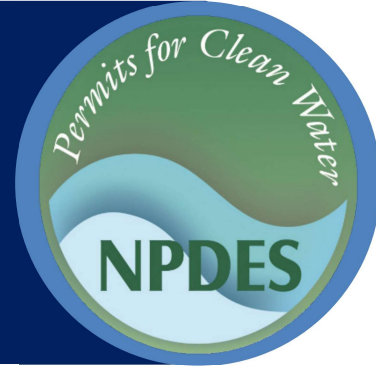
### Drainage Features with Maintenance Required

Feature ID	Name	Feature	Maintenance
10935	Active Home Build	Other	Looks good monitor for runoff
11003	Sequoia Dr Home Construction	Other	Looks good monitor for runoff
11027	Construction	Other	Monitor construction site for erosion and sediment control.
11023	Fleetwood Dr Portable Bathroom Facility	Other	Monitor that no effluent leaks out of facility
11024	Active Home Build Mecca Drive	Other	Looks good monitor for runoff
11020	Aggregate Pile near road	Other	Monitor rock pile.



# Stormwater Best Management Practice

## Illicit Discharge Detection and Elimination Program Development



**Minimum Measure:** Illicit Discharge Detection and Elimination and the Subcategory  
**Subcategory:** Developing an IDDE Program

### Description

Illicit discharges generally include any discharge into a municipal separate storm sewer system (MS4) permitted storm drain that does not consist entirely of stormwater. Illicit discharges are a problem because, unlike wastewater that flows to a treatment plant, stormwater generally flows to waterways without any additional treatment. Illicit discharges can contain pathogens, nutrients and various toxic chemicals. Common examples of illicit discharges include concrete or paint washout, waste from restaurants and mechanics, trash, and sewage.

Exceptions are referred to as “allowable discharges,” and each MS4’s permit outlines them. They typically include water from firefighting activities and residential car washes, potable water, and discharges from facilities already under a National Pollutant Discharge Elimination System permit.

### Program Development

MS4s need to develop an illicit discharge detection and elimination (IDDE) program, which primarily includes creating:

- Storm sewer system maps
- Ordinances prohibiting illicit discharges
- Inspection and enforcement programs
- Education programs on the hazards associated with illicit discharges
- Plans to detect and address illicit discharges

As the name “IDDE” suggests, detecting and addressing illicit discharges are the main goals of an IDDE program. Illicit discharges have two modes of entry into the MS4: direct or indirect entry. Direct entry means the source connects directly to the MS4 through a pipe or drain-type conveyance. Examples of direct discharges are sanitary sewer cross connections or straight pipes intentionally connected to the MS4. Indirect entry occurs when the source of the illicit discharge flows into the MS4 via



Potential illicit discharge flowing out of a concrete outfall. Confirming an illicit discharge may require sampling or other investigative methods to determine the pollutant and responsible party.

Credit: Photo by Pikrepro

storm drain inlets or infiltration through cracks or joints in the storm sewer network. Indirect entry is far more common than direct entry. Examples of sources of indirect entry include failing septic systems, sanitary sewer overflows, groundwater seepage, spills and dumping, irrigation, and washing activities. The *Illicit Discharge Detection and Elimination* guidance manual (see link below) contains additional information.

Sewage has the greatest potential to produce direct illicit discharges within any urban sub-watershed, regardless of the diverse land uses that the sub-watershed comprises. The most common sewage-related direct discharges are broken sanitary sewer lines, cross connections and straight pipe discharges. There are a variety of techniques to locate and eliminate illegal sewage connections, including tracing sewage flows from the stream or outfall back up the sewer system or conveyances to reach the problem connection. Sewage can also be linked to significant indirect illicit discharges in the form of sanitary sewer overflows, sewage infiltration/inflow and sewage dumping from recreational vehicles.

An effective IDDE program should be proactive to prevent and eliminate illicit discharges through

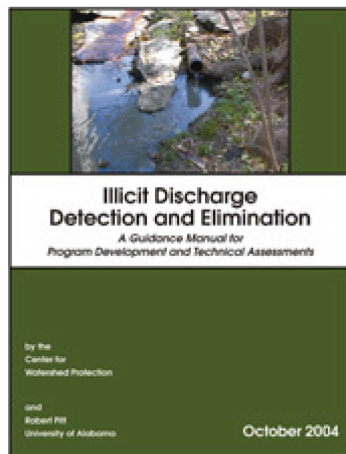
education, training and enforcement. However, the program should also be reactive to address any spills and other illicit discharges to the storm drain system that it detects.

It is also important for MS4s to develop the program to match the needs and concerns of the local community. MS4s typically have flexibility to implement their IDDE programs to address community-specific problems while meeting the specific permit requirements.

EPA developed several documents for MS4s working to develop an IDDE program and to address non-stormwater discharges in their community:

- *Illicit Discharge Detection and Elimination: A Guidance Manual for Program Development and Technical Assessments* is a comprehensive manual outlining practical, low-cost and effective techniques for stormwater program managers and practitioners.

The guidelines include details on creating and managing other aspects of an IDDE program, timelines that estimate how long program implementation will take, information on estimating program costs in terms of capital and personnel expenses, and types of testing to detect stormwater illicit discharges. This manual provides valuable guidance for communities and others seeking to establish IDDE programs.



- EPA's stormwater *Phase II fact sheet on the IDDE minimum control measure* provides examples of illicit discharges and general guidance for developing an IDDE program's framework. This fact sheet provides helpful guidance for new programs and/or staff looking to start an IDDE program.
- EPA's *Trash-Free Waters* Web site and *Aquatic Trash Prevention National Great Practices Compendium* are useful resources for educating the public about impacts and ways to prevent trash from entering waterbodies. The compendium highlights outstanding activities, technologies and programs

that prevent trash from entering the aquatic environment and/or that reduce the overall volume of trash generation.

- EPA produced the *Illegal Dumping Control* fact sheet to give communities a toolkit of effective practices for combating illegal dumping. The fact sheet discusses the importance of not only abatement and enforcement, but also public education and providing bulk trash pickup services.
- EPA developed a fact sheet on controlling *non-stormwater discharges* to the storm drain system. This fact sheet provides information on the potential environmental and public health concerns associated with non-stormwater discharges and means to detect and eliminate any non-stormwater discharges, such as sewage or process water discharges.
- *Community Solutions for Voluntary Long-Term Stormwater Planning* describes how to develop a comprehensive long-term community stormwater plan that integrates stormwater management with a community's broader plans for economic development, infrastructure investment and environmental compliance. Through this approach, communities can prioritize actions related to stormwater management as part of capital improvement plans, integrated plans, master plans or other planning efforts.
- EPA developed an *integrated planning* framework that offers a voluntary opportunity for a municipality to develop an integrated plan to meet multiple Clean Water Act requirements. An integrated plan is a process that identifies efficiencies from separate wastewater and stormwater programs to best prioritize capital investments and achieve our human health and water quality objectives. This approach can also lead to more sustainable and comprehensive solutions, such as green infrastructure, that improve water quality and provide multiple benefits that enhance community vitality.
- EPA provides *illicit discharge ordinances* as examples for local governments. They include language to address general illicit discharges, as well as illicit connections from industrial sites. EPA borrowed the language from a number of ordinances, and communities will need to assess what enforcement methods are appropriate for their areas.

- EPA has developed fact sheets to help communities address cross-contamination of stormwater with wastewater. Wastewater can impact stormwater quality through sanitary sewer overflows, cross connections, and failing or improperly maintained septic systems.

the Keep It Clean Partnership—a coalition of Phase II MS4s in Boulder County, Colorado—which developed [industry-specific fact sheets](#) explaining how local businesses can best manage restaurants, pressure washers, landscapers, carpet cleaners and car washes to protect local waterways.

## Other Online Stormwater Resources

There are many successful IDDE programs around the country. Newly developed or established programs looking to expand their capabilities should look to other programs’ successes to continue to build on existing techniques and methods. Examples of municipal IDDE programs include the following:

- [Berkeley County, South Carolina](#), has developed extensive guidance and multiple methods for the public to report illicit discharges, including a phone number, email address and social media accounts.
- [King County, Washington](#), has developed a source-tracing guidance manual that outlines how municipal staff respond to observed and reported illicit discharges.

Many local governments and watershed groups have developed fact sheets for businesses that have high potential to create illicit discharges. One such example is

### IDDE Best Management Practice Fact Sheets

EPA has developed the following fact sheets, which describe best management practices and generally provide applicability, implementation and effectiveness information to help municipal stormwater and construction site operators comply with the stormwater Phase II requirements.

#### Developing an IDDE Program

- Preventing Stormwater Contamination from Sanitary Sewage

#### Trash and Illegal Dumping

- Developing a Used Oil Recycling Program
- Illegal Dumping Control

#### Decentralized Wastewater

- Preventing Stormwater Contamination from Septic System Failure

#### Public Reporting

- Community Hotlines

### Additional Information

[Additional information on related practices and the Phase II MS4 program can be found at EPA’s National Menu of Best Management Practices \(BMPs\) for Stormwater website](#)

### Disclaimer

*This fact sheet is intended to be used for informational purposes only. These examples and references are not intended to be comprehensive and do not preclude the use of other technically sound practices. State or local requirements may apply.*

## Active Home Build Mecca Drive

### Location Details:

Created: 2024-11-19 18:25:46 UTC by John Sablan  
Updated: 2024-11-19 18:26:39 UTC by John Sablan  
Location: 29.594194362898964, -98.48140331925683  
Status: Other  
Feature Type: Other  
Feature Name: Active Home Build Mecca Drive

### Inspection Details:

Inspection Date: 2024-11-19  
Inspector: John Sablan  
Field Inspection:  
 No Maintenance Required  
 Needs Maintenance  
 Illicit Discharge

Field Notes: Looks good monitor for runoff.

Photos:



## Active Home Build

### Location Details:

Created: 2024-07-08 21:10:51 UTC by John Sablan  
Updated: 2024-11-19 18:03:24 UTC by John Sablan  
Location: 29.594979537678505, -98.47764965155952  
Status: Other  
Feature Type: Other  
Feature Name: Active Home Build

### Inspection Details:

Inspection Date: 2024-11-19  
Inspector: John Sablan  
Field Inspection:  
 No Maintenance Required  
 Needs Maintenance  
 Illicit Discharge

Field Notes: Looks good monitor for runoff.

Photos:



## Aggregate Pile Near Road

### Location Details:

Created: 2024-11-19 15:49:50 UTC by Jones Ard  
Updated: 2024-11-19 15:50:59 UTC by Jones Ard  
Location: 29.59853984042815, -98.49488537237367  
Status: Other  
Feature Type: Other  
Feature Name: Aggregate Pile In Road

### Inspection Details:

Inspection Date: 2024-11-19  
Inspector: Jones Ard  
Field Inspection:  
 No Maintenance Required  
 Needs Maintenance  
 Illicit Discharge

Field Notes: Monitor rock pile.

Photos:



## Amber Creek Drainage Channel

### Location Details:

Created: 2019-11-21 20:03:10 UTC by Jamie Taylor  
Updated: 2024-11-19 15:01:14 UTC by John Sablan  
Location: 29.5960656004, -98.475661464  
Status: Inlet  
Feature Type: Inlet  
Feature Name: Amber Creek Drainage Channel

### Inspection Details:

Inspection Date: 2024-11-19  
Inspector: John Sablan  
Field Inspection:  No Maintenance Required  
 Needs Maintenance  
 Illicit Discharge

Field Notes: Monitor minor sediment buildup.

### Photos:





## Amber Creek Inlet

### Location Details:

Created: 2019-06-21 20:07:32 UTC by Kevin Hoffman  
Updated: 2024-11-19 14:59:35 UTC by John Sablan  
Location: 29.5960361556, -98.4755984321  
Status: Inlet  
Feature Type: Inlet  
Feature Name: Amber Creek Inlet

### Inspection Details:

Inspection Date: 2024-11-19  
Inspector: John Sablan  
Field Inspection:  No Maintenance Required  
 Needs Maintenance  
 Illicit Discharge

Field Notes: Looks good.

### Photos:



## Amber Creek PCD

### Location Details:

Created: 2019-06-21 20:23:38 UTC by Kevin Hoffman  
Updated: 2024-11-19 15:02:18 UTC by John Sablan  
Location: 29.59587733, -98.47548682  
Status: BMP  
Feature Type: BMP  
Feature Name: Amber Creek PCD

19

Inspector: John Sablan

Field Inspection:

- No Maintenance Required
- Needs Maintenance
- Illicit Discharge

Field Notes: Looks good.

### Inspection Details:

Inspection Date: 2024-11-  
Photos:





## Amber Creek Southern Outfall and Channel

### Location Details:

Created: 2019-11-21 20:10:28 UTC by Jamie Taylor  
Updated: 2024-11-19 15:07:45 UTC by John Sablan  
Location: 29.5955880694, -98.4746750817  
Status: Outfall  
Feature Type: Outfall  
Feature Name: Amber creek southern outfall and channel

### Inspection Details:

Inspection Date: 2024-11-19  
Inspector: John Sablan  
Field Inspection:  
 No Maintenance Required  
 Needs Maintenance  
 Illicit Discharge

Field Notes: Downstream outfall silted out remove sediment for positive drainage.  
Clear litter and brush at upstream end

Photos:





## Antelope Dr Low Water Crossing

### Location Details:

Created: 2022-07-21 21:05:02 UTC by Hayden Dallmeyer  
Updated: 2024-11-19 18:09:35 UTC by John Sablan  
Location: 29.5936637046, -98.4860383441  
Status: Other  
Feature Type: Other  
Feature Name: Antelope Dr Low Water Crossing

### Inspection Details:

Inspection Date: 2024-11-19  
Inspector: John Sablan  
Field Inspection:  No Maintenance Required  
 Needs Maintenance  
 Illicit Discharge

Field Notes: Looks good.

Photos:





### ANT-I-1

#### Location Details:

Created: 2019-06-21 20:07:31 UTC by Kevin Hoffman  
Updated: 2024-11-19 17:00:16 UTC by John Sablan  
Location: 29.59014578, -98.47814567  
Status: Inlet  
Feature Type: Inlet  
Feature Name: ANT-I-1

#### Inspection Details:

Inspection Date: 2024-11-19  
Inspector: John Sablan  
Field Inspection:  No Maintenance Required  
 Needs Maintenance  
 Illicit Discharge

Field Notes: Looks good.

Photos:



## ANT-I-2

### Location Details:

Created: 2019-06-21 20:07:32 UTC by Kevin Hoffman  
Updated: 2024-11-19 17:02:52 UTC by John Sablan  
Location: 29.5914097227, -98.4771547839  
Status: Inlet  
Feature Type: Inlet  
Feature Name: ANT-I-2

### Inspection Details:

Inspection Date: 2024-11-19  
Inspector: John Sablan  
Field Inspection:  
 No Maintenance Required  
 Needs Maintenance  
 Illicit Discharge

Field Notes: Looks good.

Photos:



## Antler 1 Storm Sewer Pipe

### Location Details:

Created: 2019-06-21 20:31:48 UTC by Kevin Hoffman  
Updated: 2024-11-19 17:29:58 UTC by John Sablan  
Location: 29.59002023, -98.47804778  
Status: Pipe  
Feature Type: Pipe  
Feature Name: Antler 1 Storm Sewer Pipe

### Inspection Details:

Inspection Date: 2024-11-19  
Inspector: John Sablan  
Field Inspection:

- No Maintenance Required
- Needs Maintenance
- Illicit Discharge

Field Notes: Looks good, clear surrounding vegetation

### Photos:



## Antler 2 Storm Sewer Pipe

### Location Details:

Created: 2019-06-21 20:31:47 UTC by Kevin Hoffman  
Updated: 2024-11-19 17:02:16 UTC by John Sablan  
Location: 29.5915531631, -98.4769918397  
Status: Pipe  
Feature Type: Pipe  
Feature Name: Antler 2 Storm Sewer Pipe

### Inspection Details:

Inspection Date: 2024-11-19  
Inspector: John Sablan  
Field Inspection:  No Maintenance Required  
 Needs Maintenance  
 Illicit Discharge

Field Notes: Looks good.

Photos:



## Brookdale PCD

### Location Details:

Created: 2019-06-21 20:23:39 UTC by Kevin Hoffman  
Updated: 2024-11-19 14:18:21 UTC by John Sablan  
Location: 29.59569442, -98.47411282  
Status: BMP  
Feature Type: BMP  
Feature Name: Brookdale PCD

### Inspection Details:

Inspection Date: 2024-11-19  
Inspector: John Sablan  
Field Inspection:  
 No Maintenance Required  
 Needs Maintenance  
 Illicit Discharge

Field Notes: Culvert behind Brookdale needs silt removed for positive drainage.

### Photos:





### Cascade Glen Sidewalk Drain

#### Location Details:

Created: 2019-06-21 20:07:32 UTC by Kevin Hoffman  
Updated: 2024-11-19 14:56:14 UTC by John Sablan  
Location: 29.59689996, -98.47587503  
Status: Inlet  
Feature Type: Inlet  
Feature Name: Cascade Glen Sidewalk Drain

#### Inspection Details:

Inspection Date: 2024-11-19  
Inspector: John Sablan  
Field Inspection:  
 No Maintenance Required  
 Needs Maintenance  
 Illicit Discharge

Field Notes: Looks good.

#### Photos:





## Chandler Signs PCD In North Park Corporate Center Parking Lot

### Location Details:

Created: 2019-11-21 16:46:21 UTC by Jamie Taylor  
Updated: 2024-11-19 18:24:10 UTC by Jones Ard  
Location: 29.5999542743, -98.4717233106  
Status: BMP  
Feature Type: BMP  
Feature Name: Chandler Signs PCD In North Park Corporate Center  
Parking Lot

### Inspection Details:

Inspection Date: 2024-11-19  
Inspector: Jones Ard  
Field Inspection:  
 No Maintenance Required  
 Needs Maintenance  
 Illicit Discharge

Field Notes: Remove rocks and sediment from inlets and basins

### Photos:





## Channel

### Location Details:

Created: 2019-06-26 19:19:11 UTC by Jamie Taylor  
Updated: 2024-11-19 17:18:22 UTC by John Sablan  
Location: 29.5901068, -98.47752962  
Status: Outfall  
Feature Type: Outfall  
Feature Name: Channel

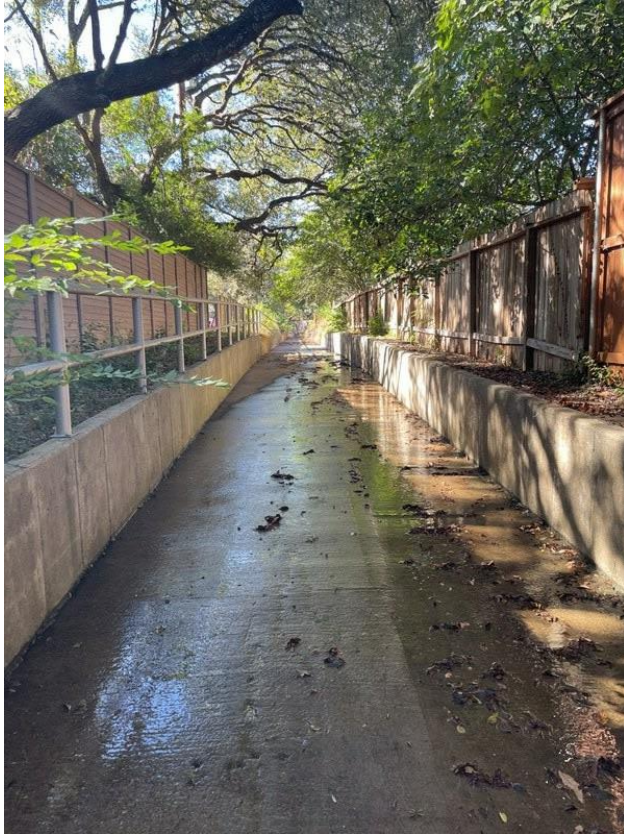
### Inspection Details:

Inspection Date: 2024-11-19  
Inspector: John Sablan  
Field Inspection:  
 No Maintenance Required  
 Needs Maintenance  
 Illicit Discharge

Field Notes: Neighbors complain of brush and hackberry tree over growing on downstream end of Navato Crossing causing intensive splashing during flood events. Channel has large leaf and sediment deposits. Needs thorough cleaning and trimming.

Photos:





## Chicago Title PCD

### Location Details:

Created: 2019-06-21 20:23:38 UTC by Kevin Hoffman  
Updated: 2024-11-19 14:15:31 UTC by Jones Ard  
Location: 29.60764467, -98.48988306  
Status: BMP  
Feature Type: BMP  
Feature Name: Chicago Title PCD

### Inspection Details:

Inspection Date:

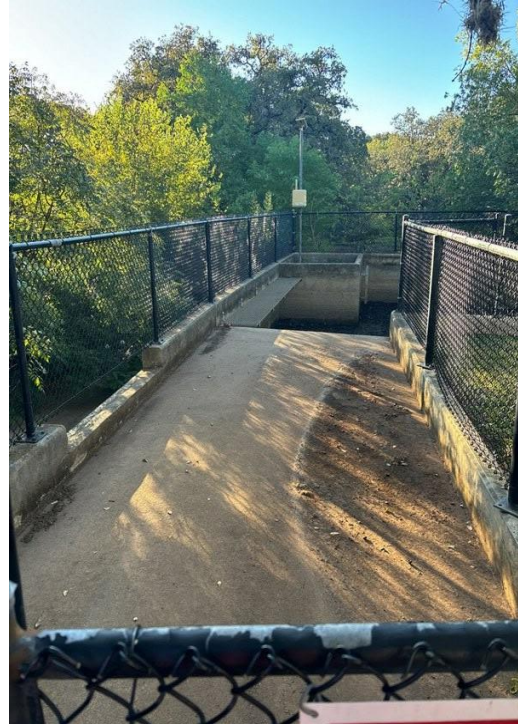
Inspector:

Field Inspection:

- No Maintenance Required
- Needs Maintenance
- Illicit Discharge

Field Notes: Remove leaves by entrance gate and in basin

Photos:





### Chula Vista Dr Inlet

#### Location Details:

Created: 2020-12-23 20:53:12 UTC by Kevin Hunt  
Updated: 2024-11-19 16:26:11 UTC by John Sablan  
Location: 29.59050796776975, -98.47680743783712  
Status: Inlet  
Feature Type: Inlet  
Feature Name: Chula Vista Dr Inlet

#### Inspection Details:

Inspection Date: 22024-11-19  
Inspector: John Sablan  
Field Inspection:  No Maintenance Required  
 Needs Maintenance  
 Illicit Discharge

Field Notes: Looks good.

#### Photos:



## Construction

### Location Details:

Created: 2024-11-19 17:36:56 UTC by Jones Ard  
Updated: 2024-11-19 17:38:24 UTC by Jones Ard  
Location: 29.6036717064262, -98.47549719791833  
Status: Other  
Feature Type: Other  
Feature Name: Construction

### Inspection Details:

Inspection Date: 2024-11-19  
Inspector: Jones Ard  
Field Inspection:  
 No Maintenance Required  
 Needs Maintenance  
 Illicit Discharge

Field Notes: Monitor construction site for erosion and sediment control.

Photos:



## Coolway Dr Low Water Crossing

### Location Details:

Created: 2022-07-21 21:44:17 UTC by Hayden Dallmeyer  
Updated: 2024-11-19 18:21:20 UTC by John Sablan  
Location: 29.591331272413573, -98.48020395273201  
Status: Other  
Feature Type: Other  
Feature Name: Coolway Dr Low Water Crossing

### Inspection Details:

Inspection Date: 2024-11-19  
Inspector: John Sablan  
Field Inspection:  
 No Maintenance Required  
 Needs Maintenance  
 Illicit Discharge

Field Notes: Looks good.

Photos:





### Corner Store PCD

#### Location Details:

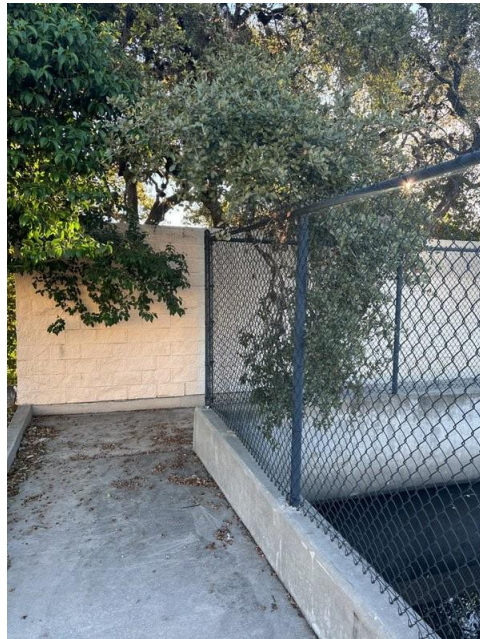
Created: 2019-06-21 20:23:38 UTC by Kevin Hoffman  
Updated: 2024-11-19 14:01:15 UTC by Jones Ard  
Location: 29.60757784, -98.49162439  
Status: BMP  
Feature Type: BMP  
Feature Name: Corner Store PCD

#### Inspection Details:

Inspection Date: 2024-11-19  
Inspector: Jones Ard  
Field Inspection:  
 No Maintenance Required  
 Needs Maintenance  
 Illicit Discharge

Field Notes: Clean trash from inside pond, rake away debris and trim vegetation from fence line.

#### Photos:





### CRT Flooring Concepts PCD

#### Location Details:

Created: 2019-06-21 20:23:38 UTC by Kevin Hoffman  
Updated: 2024-11-19 14:07:03 UTC by Jones Ard  
Location: 29.60761884, -98.49090215  
Status: BMP  
Feature Type: BMP  
Feature Name: CRT Flooring Concepts PCD

#### Inspection Details:

Inspection Date: 2024-11-19  
Inspector: Jones Ard  
Field Inspection:

- No Maintenance Required
- Needs Maintenance
- Illicit Discharge

Field Notes: Trim vines from fence and remove leaves from pond basin.

#### Photos:





### Curb Outlet, 1

#### Location Details:

Created: 2019-11-20 15:20:51 UTC by Jamie Taylor  
Updated: 2024-11-19 17:05:09 UTC by John Sablan  
Location: 29.5901603, -98.4793329  
Status: Outfall  
Feature Type: Outfall  
Feature Name: Curb Outlet, 1

Inspection Date: 2024-11-19  
Inspector: John Sablan  
Field Inspection:  
 No Maintenance Required  
 Needs Maintenance  
 Illicit Discharge

Field Notes: Looks good.

#### Inspection Details:

Photos:



## Donella Crossing

### Location Details:

Created: 2019-06-21 20:31:46 UTC by Kevin Hoffman  
Updated: 2024-11-19 16:14:46 UTC by Jones Ard  
Location: 29.59949134, -98.47882171  
Status: Pipe  
Feature Type: Pipe  
Feature Name: Donella Crossing

### Inspection Details:

Inspection Date: 2024-11-19  
Inspector: Jones Ard  
Field Inspection:  No Maintenance Required  
 Needs Maintenance  
 Illicit Discharge

Field Notes: No Maintenance Required.

### Photos:







## Donella Culvert Crossing at Mustang Circle

### Location Details:

Created: 2019-06-21 20:31:47 UTC by Kevin Hoffman  
Updated: 2024-11-19 16:18:44 UTC by Jones Ard  
Location: 29.59951553, -98.48064199  
Status: Pipe  
Feature Type: Pipe  
Feature Name: Donella Culvert Crossing at Mustang Circle

### Inspection Details:

Inspection Date: 2024-11-19  
Inspector: Jones Ard  
Field Inspection:  No Maintenance Required  
 Needs Maintenance  
 Illicit Discharge

Field Notes: Remove leaves in front of inlet.

Photos:





### Donella Inlet Box

#### Location Details:

Created: 2019-11-21 20:43:11 UTC by Jamie Taylor  
Updated: 2024-11-19 17:50:22 UTC by Jones Ard  
Location: 29.599447901, -98.4761559963  
Status: Inlet  
Feature Type: Inlet  
Feature Name: Donella Inlet Box

#### Inspection Details:

Inspection Date: 2024-11-19  
Inspector: Jones Ard  
Field Inspection:  
 No Maintenance Required  
 Needs Maintenance  
 Illicit Discharge

Photos:

Field Notes: No maintenance required.



## Drash Rear Parking Lot Inlet

### Location Details:

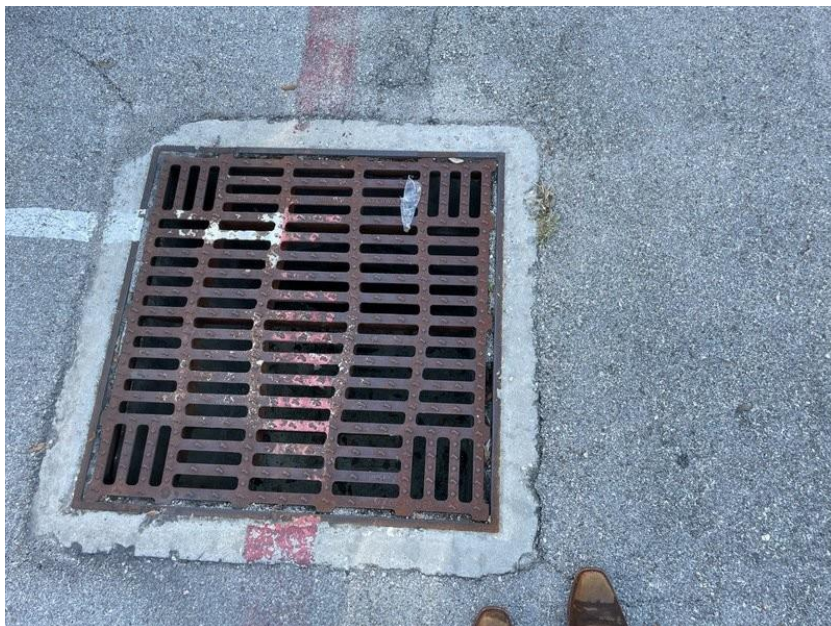
Created: 2019-11-21 21:46:11 UTC by Jamie Taylor  
Updated: 2024-11-19 15:51:33 UTC by John Sablan  
Location: 29.5917003934, -98.4760473669  
Status: Inlet  
Feature Type: Inlet  
Feature Name: Drash Rear Parking Lot Inlet

### Inspection Details:

Inspection Date: 2024-11-19  
Inspector: John Sablan  
Field Inspection:  
 No Maintenance Required  
 Needs Maintenance  
 Illicit Discharge

Field Notes:  
Looks good.

Photos:



## El Cerrito Low Water Crossing West

### Location Details:

Created: 2022-07-21 22:01:13 UTC by Hayden Dallmeyer  
Updated: 2024-11-19 18:05:16 UTC by John Sablan  
Location: 29.5936764949, -98.4873635178  
Status: Other  
Feature Type: Other  
Feature Name: El Cerrito Low Water Crossing West

### Inspection Details:

Inspection Date: 2024-11-19  
Inspector: John Sablan  
Field Inspection:  
 No Maintenance Required  
 Needs Maintenance  
 Illicit Discharge

Field Notes: Looks good.

### Photos:



## El Cerrito Cr Low Water Crossing

### Location Details:

Created: 2022-07-21 21:21:03 UTC by Hayden Dallmeyer  
Updated: 2024-11-19 14:52:06 UTC by John Sablan  
Location: 29.59912971130535, -98.48204034389786  
Status: Other  
Feature Type: Other  
Feature Name: El Cerrito Cr Low Water Crossing

### Inspection Details:

Inspection Date: 2024-11-19  
Inspector: John Sablan  
Field Inspection:  
 No Maintenance Required  
 Needs Maintenance  
 Illicit Discharge

Field Notes: Mow base of flood gauge.

### Photos:



## El Cerrito Low Water Crossing

### Location Details:

Created: 2022-07-21 21:53:37 UTC by Hayden Dallmeyer  
Updated: 2024-11-19 18:12:37 UTC by John Sablan  
Location: 29.593118713264904, -98.48491206774347  
Status: Other  
Feature Type: Other  
Feature Name: El Cerrito Low Water Crossing

### Inspection Details:

Inspection Date: 2024-11-19  
Inspector: John Sablan  
Field Inspection:  
 No Maintenance Required  
 Needs Maintenance  
 Illicit Discharge

Field Notes: Looks good clear moss of off gauge.

### Photos:



## Express Lube PCD

### Location Details:

Created: 2019-06-21 20:23:38 UTC by Kevin Hoffman  
Updated: 2024-11-19 14:04:31 UTC by Jones Ard  
Location: 29.6078122089, -98.4913406521  
Status: BMP  
Feature Type: BMP  
Feature Name: Express Lube PCD

### Inspection Details:

Inspection Date: 2024-11-19  
Inspector: Jones Ard  
Field Inspection:  
 No Maintenance Required  
 Needs Maintenance  
 Illicit Discharge

Field Notes: Clean trash at pond inlet and remove vegetation and debris from the back of pond basin.

### Photos:





## Fleetwood Dr Portable Bathroom Facility

### Location Details:

Created: 2024-11-19 18:40:43 UTC by John Sablan  
Updated: 2024-11-19 18:41:45 UTC by John Sablan  
Location: 29.597171992091134, -98.48665189938478  
Status: Other  
Feature Type: Other  
Feature Name:

### Inspection Details:

Inspection Date:

Inspector:

Field Inspection:

- No Maintenance Required
- Needs Maintenance
- Illicit Discharge

Field Notes: Monitor that no effluent leaks out of facility.

Photos:



## Fleetwood Outfall

### Location Details:

Created: 2019-06-21 20:16:47 UTC by Kevin Hoffman  
Updated: 2024-11-19 15:57:44 UTC by Jones Ard  
Location: 29.59722939, -98.49011723  
Status: Outfall  
Feature Type: Outfall  
Feature Name: Fleetwood Outfall

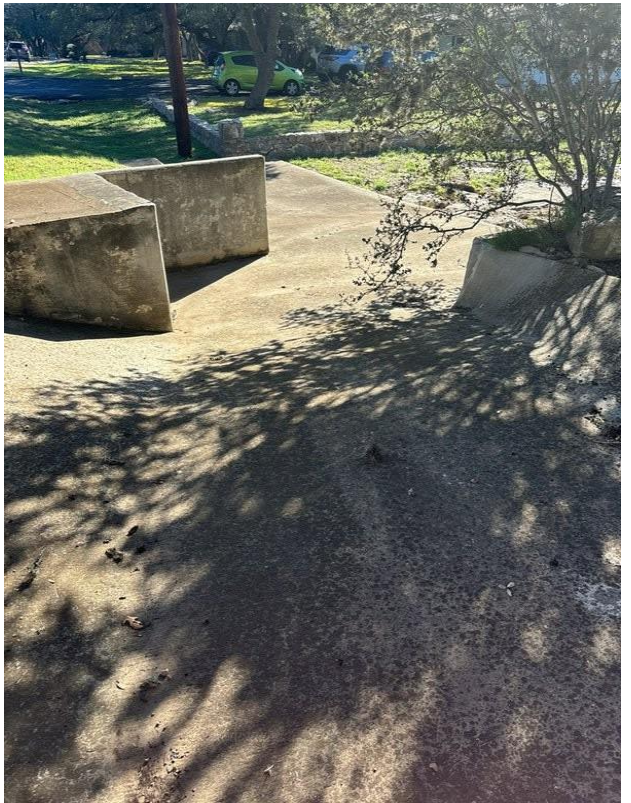
### Inspection Details:

Inspection Date: 2024-11-19  
Inspector: Jones Ard  
Field Inspection:  
 No Maintenance Required  
 Needs Maintenance  
 Illicit Discharge

Field Notes: Remove sediment and branches near outfall.

### Photos:





## Garrapata Storm Water Inflow

### Location Details:

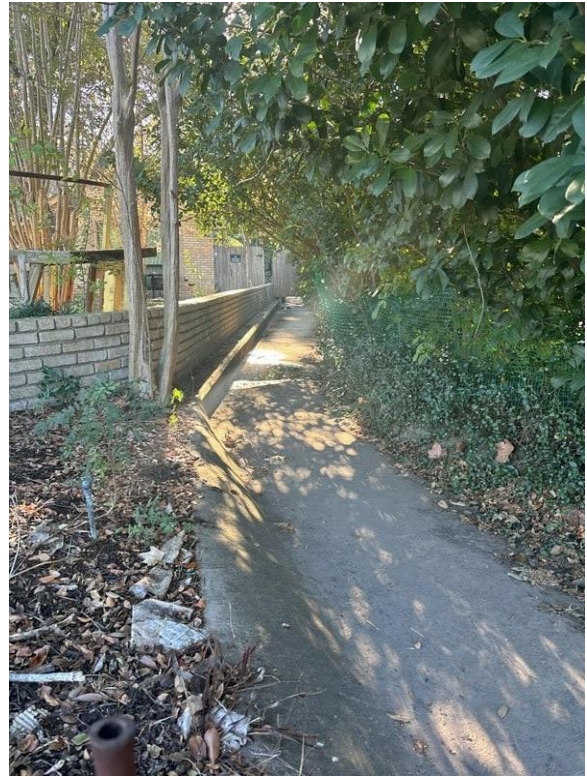
Created: 2020-07-29 14:36:07 UTC by Kevin Hunt  
Updated: 2024-11-19 15:06:16 UTC by Jones Ard  
Location: 29.6019308, -98.4887309  
Status: Inlet  
Feature Type: Inlet  
Feature Name: Garrapata Storm Water Inflow

### Inspection Details:

Inspection Date: 2024-11-19  
Inspector: Jones Ard  
Field Inspection:  
 No Maintenance Required  
 Needs Maintenance  
 Illicit Discharge

Field Notes: Remove sediment from road/entry and trim vegetation at channel entrance.

### Photos:



## Grand Oak Outfall

### Location Details:

Created: 2019-06-26 14:55:32 UTC by Jamie Taylor  
Updated: 2024-11-19 16:53:09 UTC by Jones Ard  
Location: 29.60550876, -98.48620925  
Status: Outfall  
Feature Type: Outfall  
Feature Name: Grand Oak Outfall

### Inspection Details:

Inspection Date: 2024-11-19  
Inspector: Jones Ard  
Field Inspection:  
 No Maintenance Required  
 Needs Maintenance  
 Illicit Discharge

Field Notes: No Maintenance Required

Photos:



## Great Wood Street Outfall

### Location Details:

Created: 2019-11-21 20:23:10 UTC by Jamie Taylor  
Updated: 2024-11-19 16:19:09 UTC by Jones Ard  
Location: 29.5986196822, -98.4781706706  
Status: Outfall  
Feature Type: Outfall  
Feature Name: Great Wood Street Outfall

### Inspection Details:

Inspection Date: 2024-11-19  
Inspector: John Sablan  
Field Inspection:  
 No Maintenance Required  
 Needs Maintenance  
 Illicit Discharge

Field Notes: Looks good.

Photos:



## Holiday Inn PCD

### Location Details:

Created: 2019-06-21 20:23:39 UTC by Kevin Hoffman  
Updated: 2024-11-19 15:47:34 UTC by John Sablan  
Location: 29.59173103, -98.47466033  
Status: BMP  
Feature Type: BMP  
Feature Name: Holiday Inn PCD

### Inspection Details:

Inspection Date: 2024-11-19  
Inspector: John Sablan  
Field Inspection:

- No Maintenance Required
- Needs Maintenance
- Illicit Discharge

Field Notes: Looks good. Ensure lock is properly installed.

### Photos:



## Large Channel Drain Inlet

### Location Details:

Created: 2019-06-26 19:17:44 UTC by Jamie Taylor  
Updated: 2024-11-19 17:19:16 UTC by John Sablan  
Location: 29.59035111, -98.47714238  
Status: Inlet  
Feature Type: Inlet  
Feature Name: Large Channel Drain Inlet

### Inspection Details:

Inspection Date: 2024-11-19  
Inspector: John Sablan  
Field Inspection:  
 No Maintenance Required  
 Needs Maintenance  
 Illicit Discharge

Field Notes: Looks good.

Photos:



## Marriott Global Reservation PCD

### Location Details:

Created: 2019-06-21 20:23:37 UTC by Kevin Hoffman  
Updated: 2024-11-19 18:18:29 UTC by Jones Ard  
Location: 29.59983037, -98.4746156  
Status: BMP  
Feature Type: BMP  
Feature Name: Marriott Global Reservation PCD

### Inspection Details:

Inspection Date: 2024-11-19  
Inspector: Jones Ard  
Field Inspection:  
 No Maintenance Required  
 Needs Maintenance  
 Illicit Discharge

Field Notes: Remove branch from fence and remove leaves and debris from basin.

Photos:





## Mecca Inlets Outfall

### Location Details:

Created: 2019-06-21 20:16:47 UTC by Kevin Hoffman  
Updated: 2024-11-19 14:32:20 UTC by John Sablan  
Location: 29.5945187183, -98.4741185233  
Status: Outfall  
Feature Type: Outfall  
Feature Name: Mecca Inlets Outfall

### Inspection Details:

Inspection Date: 2024-11-19  
Inspector: John Sablan  
Field Inspection:  No Maintenance Required  
 Needs Maintenance  
 Illicit Discharge

Field Notes: Monitor parking lot runoff as it is beginning to undermine outfall riprap

### Photos:



### MEC-I-1(M)

#### Location Details:

Created: 2019-06-21 20:07:31 UTC by Kevin Hoffman  
Updated: 2024-11-19 14:46:19 UTC by John Sablan  
Location: 29.5934700553, -98.4745111316  
Status: Inlet  
Feature Type: Inlet  
Feature Name: MEC-I-1(M)

#### Inspection Details:

Inspection Date: 2024-11-19  
Inspector: John Sablan  
Field Inspection:  
 No Maintenance Required  
 Needs Maintenance  
 Illicit Discharge

Field Notes: Looks good.

#### Photos:



### MEC-I-2(M)

#### Location Details:

Created: 2019-06-21 20:07:31 UTC by Kevin Hoffman  
Updated: 2024-11-19 14:45:12 UTC by John Sablan  
Location: 29.5935697618, -98.4744330123  
Status: Inlet  
Feature Type: Inlet  
Feature Name: MEC-I-2(M)

#### Inspection Details:

Inspection Date: 2024-11-19  
Inspector: John Sablan  
Field Inspection:  No Maintenance Required  
 Needs Maintenance  
 Illicit Discharge

Field Notes: Looks good.

#### Photos:



## Midas Inlet In Rear

### Location Details:

Created: 2019-06-26 18:34:37 UTC by Jamie Taylor  
Updated: 2024-11-19 16:12:26 UTC by John Sablan  
Location: 29.5918767779, -98.4745195135  
Status: Inlet  
Feature Type: Inlet  
Feature Name: Midas Inlet In Rear

### Inspection Details:

Inspection Date: 2024-11-19  
Inspector: John Sablan  
Field Inspection:  
 No Maintenance Required  
 Needs Maintenance  
 Illicit Discharge

Field Notes: Looks good.

Photos:



### Miner Fleet Parking Lot Inlet

#### Location Details:

Created: 2019-11-21 16:27:33 UTC by Jamie Taylor  
Updated: 2024-11-19 18:09:41 UTC by Jones Ard  
Location: 29.601184194, -98.4730094299  
Status: Inlet  
Feature Type: Inlet  
Feature Name: Miner Fleet Parking Lot Inlet

#### Inspection Details:

Inspection Date: 2024-11-19  
Inspector: Jones Ard  
Field Inspection:  
 No Maintenance Required  
 Needs Maintenance  
 Illicit Discharge

Field Notes: No maintenance required.

Photos:



### Miner Fleet PCD

#### Location Details:

Created: 2019-06-21 20:23:37 UTC by Kevin Hoffman  
Updated: 2024-11-19 18:11:27 UTC by Jones Ard  
Location: 29.60084652, -98.47290999  
Status: BMP  
Feature Type: BMP  
Feature Name: Miner Fleet PCD

#### Inspection Details:

Inspection Date: 2024-11-19  
Inspector: Jones Ard  
Field Inspection:  
 No Maintenance Required  
 Needs Maintenance  
 Illicit Discharge

Field Notes: Remove all debris and vegetation.

Photos:



## Monarch Trophy PCD

### Location Details:

Created: 2019-06-21 20:23:39 UTC by Kevin Hoffman  
Updated: 2024-11-19 15:54:28 UTC by John Sablan  
Location: 29.59079715, -98.47576035  
Status: BMP  
Feature Type: BMP  
Feature Name: Monarch Trophy PCD

### Inspection Details:

Inspection Date: 2024-11-19  
Inspector: John Sablan  
Field Inspection:

- No Maintenance Required
- Needs Maintenance
- Illicit Discharge

Field Notes: Minor debris, looks good otherwise.

### Photos:



## Monarch Trophy Swale

### Location Details:

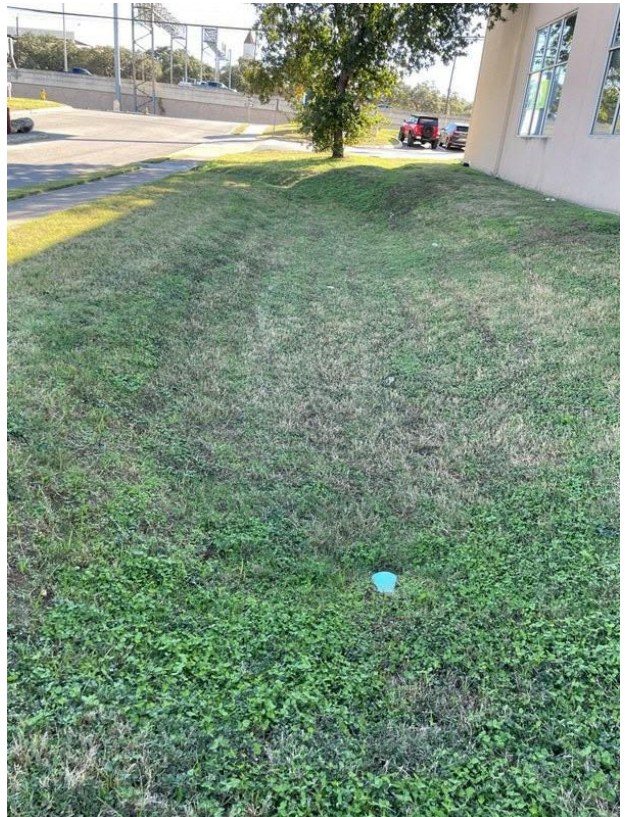
Created: 2019-06-21 20:23:39 UTC by Kevin Hoffman  
Updated: 2024-11-19 16:06:44 UTC by John Sablan  
Location: 29.59109369, -98.474776  
Status: BMP  
Feature Type: BMP  
Feature Name: Monarch Trophy Swale

### Inspection Details:

Inspection Date: 2024-11-19  
Inspector: John Sablan  
Field Inspection:  
 No Maintenance Required  
 Needs Maintenance  
 Illicit Discharge

Field Notes: Looks good.

### Photos:





## Mustang Circle

### Location Details:

Created: 2019-06-21 20:16:46 UTC by Kevin Hoffman  
Updated: 2024-11-19 16:34:30 UTC by Jones Ard  
Location: 29.60214474, -98.480414  
Status: Outfall  
Feature Type: Outfall  
Feature Name: Mustang Circle

### Inspection Details:

Inspection Date: 2024-11-19  
Inspector: Jones Ard  
Field Inspection:  
 No Maintenance Required  
 Needs Maintenance  
 Illicit Discharge

Field Notes: Remove vegetation at front to allow for flow and prevent stagnation

Photos:



### Navato Blvd Inlet

#### Location Details:

Created: 2019-07-09 16:28:20 UTC by Jamie Taylor  
Updated: 2024-11-19 17:24:08 UTC by John Sablan  
Location: 29.58950941, -98.47854048  
Status: Inlet  
Feature Type: Inlet  
Feature Name: Navato Blvd Inlet

#### Inspection Details:

Inspection Date: 2024-11-19  
Inspector: John Sablan  
Field Inspection:  
 No Maintenance Required  
 Needs Maintenance  
 Illicit Discharge

Field Notes:  
Looks good

#### Photos:



## Navato Residential Drains

### Location Details:

Created: 2024-07-08 20:22:00 UTC by John Sablan  
Updated: 2024-11-20 14:43:22 UTC by John Sablan  
Location: 29.58969461553607, -98.47871779821696  
Status: Other  
Feature Type: Other  
Feature Name: Navato Residential Drains

### Inspection Details:

Inspection Date: 2024-11-20  
Inspector: John Sablan  
Field Inspection:  
 No Maintenance Required  
 Needs Maintenance  
 Illicit Discharge

Field Notes: Looks good.

Photos:



## Navato Storm Sewer Pipe

### Location Details:

Created: 2019-06-21 20:31:48 UTC by Kevin Hoffman  
Updated: 2024-11-19 17:12:59 UTC by John Sablan  
Location: 29.58949309, -98.4784226  
Status: Pipe  
Feature Type: Pipe  
Feature Name: Navato Storm Sewer Pipe

### Inspection Details:

Inspection Date: 2024-11-19  
Inspector: John Sablan  
Field Inspection:  
 No Maintenance Required  
 Needs Maintenance  
 Illicit Discharge

Field Notes: Looks good.

### Photos:





### New Drash Parking Lot Box Inlet

#### Location Details:

Created: 2019-06-26 18:47:56 UTC by Jamie Taylor  
Updated: 2024-11-19 15:50:55 UTC by John Sablan  
Location: 29.59172926, -98.47552132  
Status: Inlet  
Feature Type: Inlet  
Feature Name: New Drash Parking Lot Box Inlet

#### Inspection Details:

Inspection Date: 2024-11-19  
Inspector: John Sablan  
Field Inspection:  
 No Maintenance Required  
 Needs Maintenance  
 Illicit Discharge

Field Notes: Looks good.

#### Photos:



## North Oak Crossing

### Location Details:

Created: 2019-06-21 20:31:46 UTC by Kevin Hoffman  
Updated: 2024-11-19 14:26:54 UTC by Jones Ard  
Location: 29.60726051, -98.48776927  
Status: Pipe  
Feature Type: Pipe  
Feature Name: North Oak Crossing

### Inspection Details:

Inspection Date: 2024-11-19  
Inspector: Jones Ard  
Field Inspection:  
 No Maintenance Required  
 Needs Maintenance  
 Illicit Discharge

Field Notes: No maintenance required.

Photos:



## North Oak Outfall

### Location Details:

Created: 2019-06-21 20:16:46 UTC by Kevin Hoffman  
Updated: 2024-11-19 19:20:37 UTC by Jones Ard  
Location: 29.60731404, -98.48704576  
Status: Outfall  
Feature Type: Outfall  
Feature Name: North Oak Outfall

### Inspection Details:

Inspection Date: 2024-11-19  
Inspector: Jones Ard  
Field Inspection:  
 No Maintenance Required  
 Needs Maintenance  
 Illicit Discharge

Field Notes: Trim vegetation and remove sediment from concrete.

### Photos:



## North Oak Private Crossing East

### Location Details:

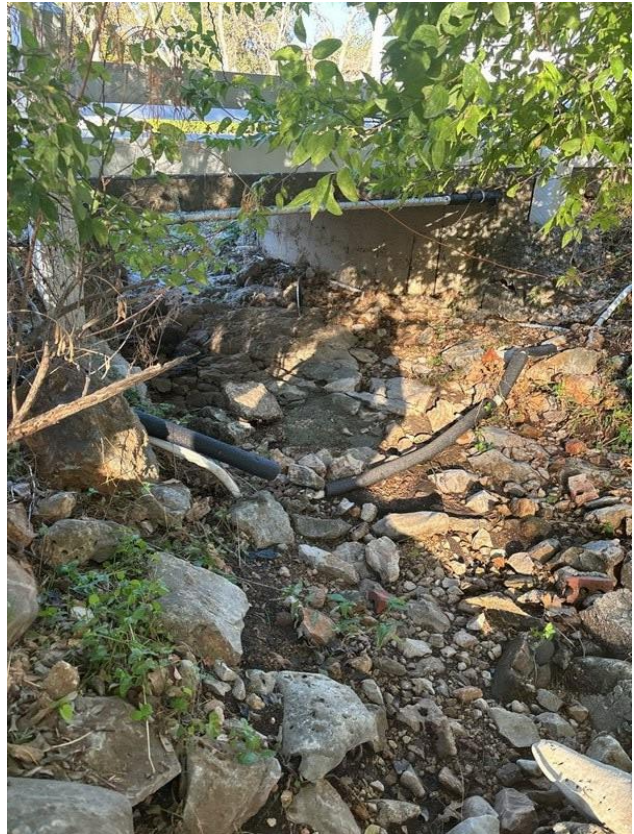
Created: 2019-06-21 20:31:47 UTC by Kevin Hoffman  
Updated: 2024-11-19 14:28:49 UTC by Jones Ard  
Location: 29.6073825395, -98.4879858792  
Status: Pipe  
Feature Type: Pipe  
Feature Name: North Oak Private Crossing East

### Inspection Details:

Inspection Date: 2024-11-19  
Inspector: Jones Ard  
Field Inspection:  
 No Maintenance Required  
 Needs Maintenance  
 Illicit Discharge

Field Notes: Looks good.

### Photos:



## North Oak Private Crossing West

### Location Details:

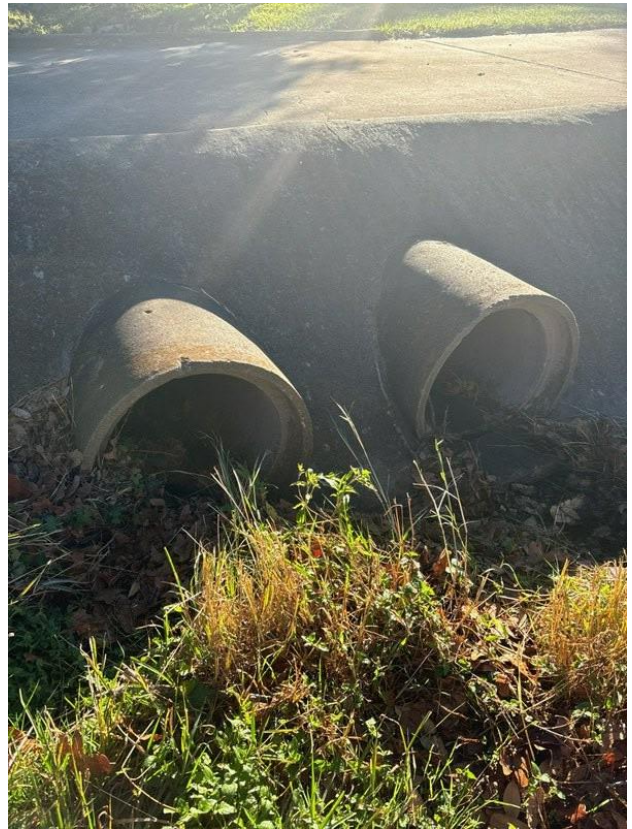
Created: 2019-06-21 20:31:46 UTC by Kevin Hoffman  
Updated: 2024-11-19 14:31:38 UTC by Jones Ard  
Location: 29.60732417, -98.48862362  
Status: Pipe  
Feature Type: Pipe  
Feature Name: North Oak Private Crossing West

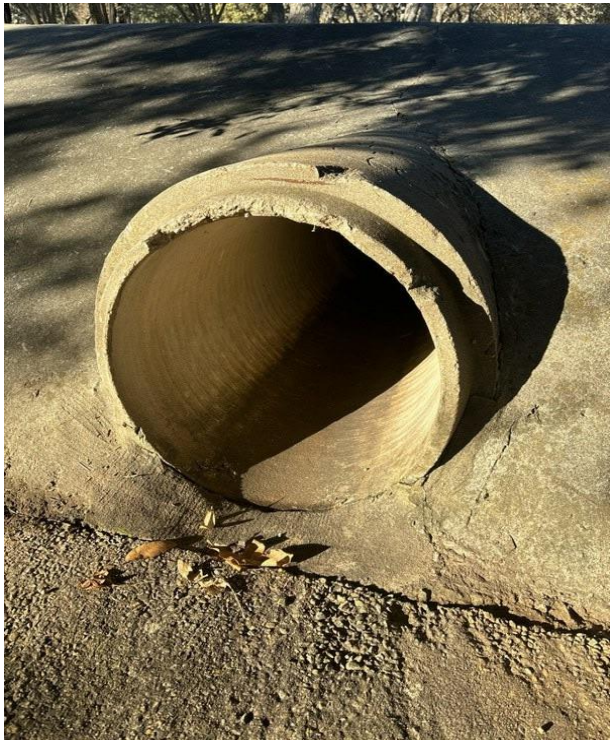
### Inspection Details:

Inspection Date: 2024-11-19  
Inspector: Jones Ard  
Field Inspection:  
 No Maintenance Required  
 Needs Maintenance  
 Illicit Discharge

Field Notes: Remove soil and vegetation blocking the outlets.

Photos:





### Oak-I-1(M)

#### Location Details:

Created: 2019-06-21 20:07:31 UTC by Kevin Hoffman  
Updated: 2024-11-19 16:07:26 UTC by John Sablan  
Location: 29.59114158, -98.4748248  
Status: Inlet  
Feature Type: Inlet  
Feature Name: Oak-I-(M)

#### Inspection Details:

Inspection Date: 2024-11-19  
Inspector: John Sablan  
Field Inspection:  No Maintenance Required  
 Needs Maintenance  
 Illicit Discharge

Field Notes: Looks good.

#### Photos:



### Oak-I-2(M)

#### Location Details:

Created: 2019-06-21 20:07:31 UTC by Kevin Hoffman  
Updated: 2024-11-19 16:08:07 UTC by John Sablan  
Location: 29.59126797, -98.47477851  
Status: Inlet  
Feature Type: Inlet  
Feature Name: Oak-I-2(M)

#### Inspection Details:

Inspection Date: 2024-11-19  
Inspector: John Sablan  
Field Inspection:  No Maintenance Required  
 Needs Maintenance  
 Illicit Discharge

Field Notes: Looks good.

#### Photos:



## Oak Creek Circle Channel

### Location Details:

Created: 2019-06-21 20:16:47 UTC by Kevin Hoffman  
Updated: 2024-11-19 16:11:26 UTC by John Sablan  
Location: 29.59174908, -98.47460568  
Status: Outfall  
Feature Type: Outfall  
Feature Name: Oak Creek Circle Channel

### Inspection Details:

Inspection Date: 2024-11-19  
Inspector: John Sablan  
Field Inspection:  
 No Maintenance Required  
 Needs Maintenance  
 Illicit Discharge

Field Notes: Clear brush at downstream end

### Photos:



## Oak Creek Circle Inlet

### Location Details:

Created: 2019-06-21 20:07:32 UTC by Kevin Hoffman  
Updated: 2024-11-19 15:57:22 UTC by John Sablan  
Location: 29.59114966, -98.47565409  
Status: Inlet  
Feature Type: Inlet  
Feature Name: Oak Creek Circle Inlet

### Inspection Details:

Inspection Date: 2024-11-19  
Inspector: John Sablan  
Field Inspection:  
 No Maintenance Required  
 Needs Maintenance  
 Illicit Discharge

Field Notes: Looks good

### Photos:



## Oak Creek Circle Storm Sewer Pipe

### Location Details:

Created: 2019-06-21 20:31:48 UTC by Kevin Hoffman  
Updated: 2024-11-19 16:08:41 UTC by John Sablan  
Location: 29.59120477, -98.47480166  
Status: Pipe  
Feature Type: Pipe  
Feature Name: Oak Creek Circle Storm Sewer Pipe

### Inspection Details:

Inspection Date: 2024-11-19  
Inspector: John Sablan  
Field Inspection:  No Maintenance Required  
 Needs Maintenance  
 Illicit Discharge

Field Notes: Minor sediment looks good otherwise

### Photos:



## Oak Creek Inlet-2

### Location Details:

Created: 2024-07-08 15:05:39 UTC by Jones Ard  
Updated: 2024-11-19 15:56:20 UTC by John Sablan  
Location: 29.59110311, -98.47555073  
Status: Inlet  
Feature Type: Inlet  
Feature Name: Oak Circle Creek Inlet-2

### Inspection Details:

Inspection Date: 2024-11-19  
Inspector: John Sablan  
Field Inspection:  
 No Maintenance Required  
 Needs Maintenance  
 Illicit Discharge

Field Notes: Clear sediment buildup

### Photos:



## Optometrist Roundabout PCD

### Location Details:

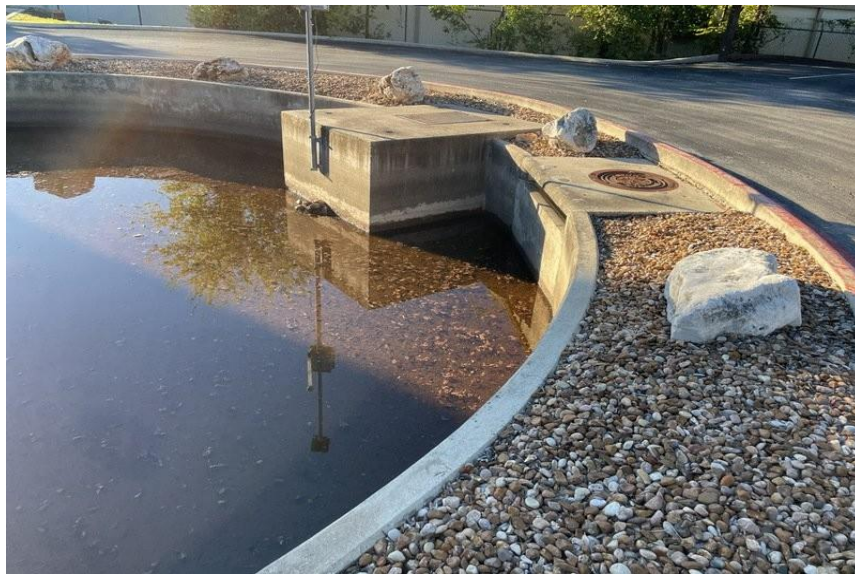
Created: 2019-06-21 20:23:37 UTC by Kevin Hoffman  
Updated: 2024-11-19 14:22:25 UTC by John Sablan  
Location: 29.59527832, -98.47407988  
Status: BMP  
Feature Type: BMP  
Feature Name: Optometrist Roundabout PCD

### Inspection Details:

Inspection Date: 2024-11-19  
Inspector: John Sablan  
Field Inspection:  
 No Maintenance Required  
 Needs Maintenance  
 Illicit Discharge

Field Notes: Looks good.

### Photos:



## Outfall

### Location Details:

Created: 2021-07-01 19:36:03 UTC by Jones Ard  
Updated: 2024-11-19 15:27:08 UTC by Jones Ard  
Location: 29.5996166, -98.5009608  
Status: Outfall  
Feature Type: Outfall  
Feature Name: Outfall

### Inspection Details:

Inspection Date: 2024-11-19  
Inspector: John Sablan  
Field Inspection:  
 No Maintenance Required  
 Needs Maintenance  
 Illicit Discharge

Field Notes: Remove leaves and sediment from the front of outfall.

### Photos:



## Pantheon Commercial Strip PCD

### Location Details:

Created: 2019-06-21 20:23:38 UTC by Kevin Hoffman  
Updated: 2024-11-19 15:09:22 UTC by John Sablan  
Location: 29.59568297, -98.47441321  
Status: BMP  
Feature Type: BMP  
Feature Name: Pantheon Commercial Strip PCD

### Inspection Details:

Inspection Date: 2024-11-19  
Inspector: John Sablan  
Field Inspection:  
 No Maintenance Required  
 Needs Maintenance  
 Illicit Discharge

Field Notes: Looks good.

### Photos:





## Park Oak Outfall

### Location Details:

Created: 2019-06-21 20:16:46 UTC by Kevin Hoffman  
Updated: 2024-11-19 14:38:52 UTC by Jones Ard  
Location: 29.60636258, -98.48702431  
Status: Outfall  
Feature Type: Outfall  
Feature Name: Park Oak Outfall

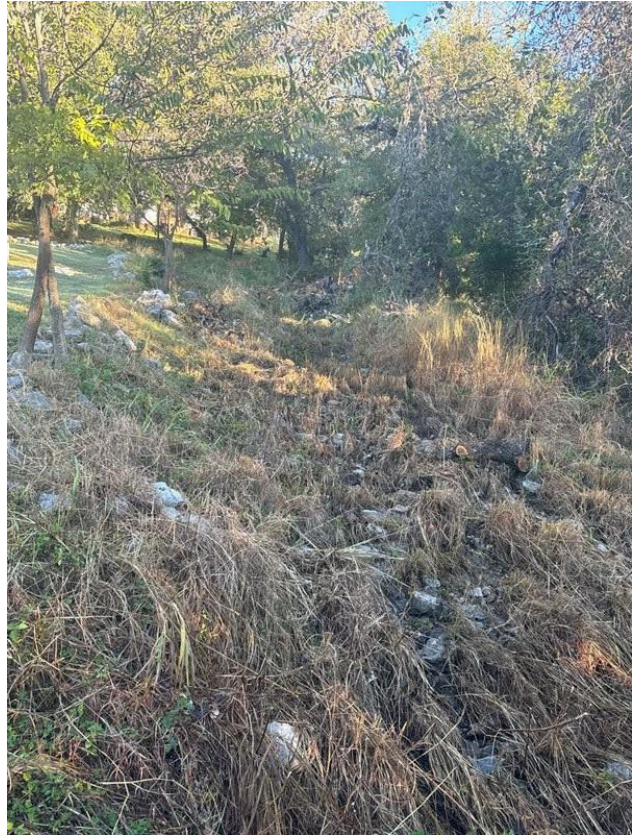
### Inspection Details:

Inspection Date: 2024-11-19  
Inspector: Jones Ard  
Field Inspection:  
 No Maintenance Required  
 Needs Maintenance  
 Illicit Discharge

Field Notes: Remove shrubs, trash, and logs from channel

Photos:





### Parking Lot Box Inlet

#### Location Details:

Created: 2019-11-21 16:44:37 UTC by Jamie Taylor  
Updated: 2024-11-19 18:25:59 UTC by Jones Ard  
Location: 29.5998061815, -98.4719093889  
Status: Inlet  
Feature Type: Inlet  
Feature Name: Parking Lot Box Inlet

#### Inspection Details:

Inspection Date: 2024-11-19  
Inspector: Jones Ard  
Field Inspection:  
 No Maintenance Required  
 Needs Maintenance  
 Illicit Discharge

Field Notes: No maintenance required.

#### Photos:



## Paseo Canada Outfall 1

### Location Details:

Created: 2019-06-26 13:44:30 UTC by Jamie Taylor  
Updated: 2024-11-19 14:45:39 UTC by Jones Ard  
Location: 29.6070857925, -98.4901313111  
Status: Outfall  
Feature Type: Outfall  
Feature Name: Paseo Canada Outfall

### Inspection Details:

Inspection Date: 2024-11-19  
Inspector: Jones Ard  
Field Inspection:  
 No Maintenance Required  
 Needs Maintenance  
 Illicit Discharge

Field Notes: Remove rocks and soil blocking outfall.

### Photos:



## Paseo Canada Outfall 2

### Location Details:

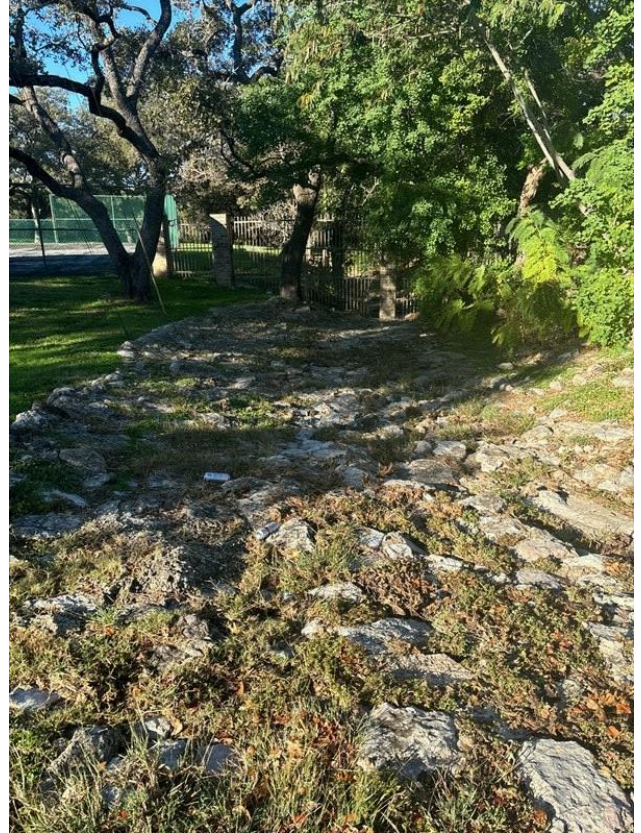
Created: 2019-06-21 20:16:47 UTC by Kevin Hoffman  
Updated: 2024-11-19 14:57:19 UTC by Jones Ard  
Location: 29.60651649, -98.49506021  
Status: Outfall  
Feature Type: Outfall  
Feature Name: Paseo Canada Outfall 2

### Inspection Details:

Inspection Date: 2024-11-19  
Inspector: Jones Ard  
Field Inspection:  
 No Maintenance Required  
 Needs Maintenance  
 Illicit Discharge

Field Notes: Mild trash, but otherwise looks good.

### Photos:



## PCD2 Pediatrics

### Location Details:

Created: 2019-11-20 17:35:28 UTC by Jamie Taylor  
Updated: 2024-11-19 17:58:59 UTC by Jones Ard  
Location: 29.5982828, -98.4724169  
Status: BMP  
Feature Type: BMP  
Feature Name: PCD2 Pediatrics

### Inspection Details:

Inspection Date: 2024-11-19  
Inspector: Jones Ard  
Field Inspection:  
 No Maintenance Required  
 Needs Maintenance  
 Illicit Discharge

Field Notes: Remove leaves from inlets and basin.

### Photos:



## Pediatric Dentistry Office PCD

### Location Details:

Created: 2019-06-21 20:23:38 UTC by Kevin Hoffman  
Updated: 2024-11-19 18:01:36 UTC by Jones Ard  
Location: 29.59818648, -98.47215917  
Status: BMP  
Feature Type: BMP  
Feature Name: Pediatric Dentistry Office PCD

### Inspection Details:

Inspection Date: 2024-11-19  
Inspector: Jones Ard  
Field Inspection:  
 No Maintenance Required  
 Needs Maintenance  
 Illicit Discharge

Field Notes: Remove sediment buildup from pipe inlet and remove all debris and vegetation from basins.

Photos:





## Permeable Pavers

### Location Details:

Created: 2019-11-20 16:56:51 UTC by Jamie Taylor  
Updated: 2024-11-19 15:21:03 UTC by Jones Ard  
Location: 29.599329834329982, -98.50023284554482  
Status: BMP  
Feature Type: BMP  
Feature Name: Permeable Pavers

### Inspection Details:

Inspection Date: 2024-11-19  
Inspector: Jones Ard  
Field Inspection:  
 No Maintenance Required  
 Needs Maintenance  
 Illicit Discharge

Field Notes: No maintenance required.

Photos:



## Premier 1 Auto Care Inlet

### Location Details:

Created: 2019-06-26 18:32:37 UTC by Jamie Taylor  
Updated: 2024-11-19 16:11:54 UTC by John Sablan  
Location: 29.5919645327, -98.4745245427  
Status: Inlet  
Feature Type: Inlet  
Feature Name: Premier 1 Auto Care Inlet

### Inspection Details:

Inspection Date: 2024-11-19  
Inspector: John Sablan  
Field Inspection:  
 No Maintenance Required  
 Needs Maintenance  
 Illicit Discharge

Field Notes: Minor sediment looks good otherwise.

Photos:



## Premier 1 Autocare Inlet 1

### Location Details:

Created: 2019-06-26 18:12:15 UTC by Jamie Taylor  
Updated: 2024-11-19 16:14:08 UTC by John Sablan  
Location: 29.5923869792, -98.4737540781  
Status: Inlet  
Feature Type: Inlet  
Feature Name: Premier 1 Autocare Inlet 1

### Inspection Details:

Inspection Date: 2024-11-19  
Inspector: John Sablan  
Field Inspection:  
 No Maintenance Required  
 Needs Maintenance  
 Illicit Discharge

Field Notes: Looks good.

Photos:



## Premier Autocare Inlet 2

### Location Details:

Created: 2019-06-26 18:14:13 UTC by Jamie Taylor  
Updated: 2024-11-19 16:14:31 UTC by John Sablan  
Location: 29.5924989316, -98.4737195447  
Status: Inlet  
Feature Type: Inlet  
Feature Name: Premier Autocare Inlet 2

### Inspection Details:

Inspection Date: 2024-11-19  
Inspector: John Sablan  
Field Inspection:  
 No Maintenance Required  
 Needs Maintenance  
 Illicit Discharge

Field Notes: Looks good.

Photos:



## Private Outfall

### Location Details:

Created: 2024-11-19 15:13:21 UTC by Jones Ard  
Updated: 2024-11-19 15:14:28 UTC by Jones Ard  
Location: 29.60321916, -98.49306206  
Status: Other  
Feature Type: Other  
Feature Name: Private Outfall

### Inspection Details:

Inspection Date: 2024-11-19  
Inspector: Jones Ard  
Field Inspection:  
 No Maintenance Required  
 Needs Maintenance  
 Illicit Discharge

Field Notes: Private outfall looks good.

Photos:



## Public Storage Outfall

### Location Details:

Created: 2019-06-21 20:16:47 UTC by Kevin Hoffman  
Updated: 2024-11-19 14:37:50 UTC by John Sablan  
Location: 29.594819, -98.47438037  
Status: Outfall  
Feature Type: Outfall  
Feature Name: Public Storage Outfall

### Inspection Details:

Inspection Date: 2024-11-19  
Inspector: John Sablan  
Field Inspection:  
 No Maintenance Required  
 Needs Maintenance  
 Illicit Discharge

Field Notes: Looks good.

Photos:



## Retention Pond W/ Infiltration

### Location Details:

Created: 2019-06-26 19:08:03 UTC by Jamie Taylo  
Updated: 2024-11-20 14:40:14 UTC by John Sablan  
Location: 29.59011554, -98.47730432  
Status: Pond  
Feature Type: Pond  
Feature Name: Retention Pond w/ Infiltration

### Inspection Details:

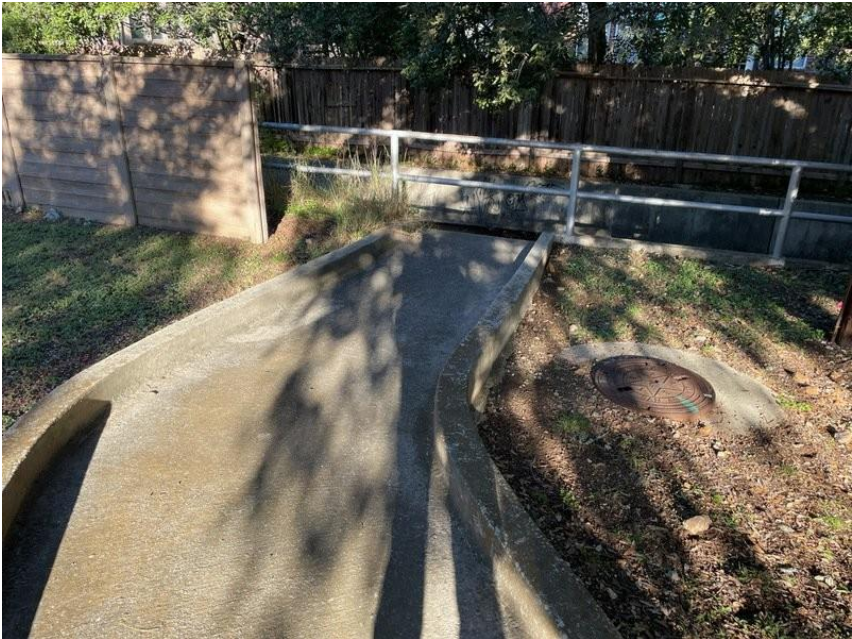
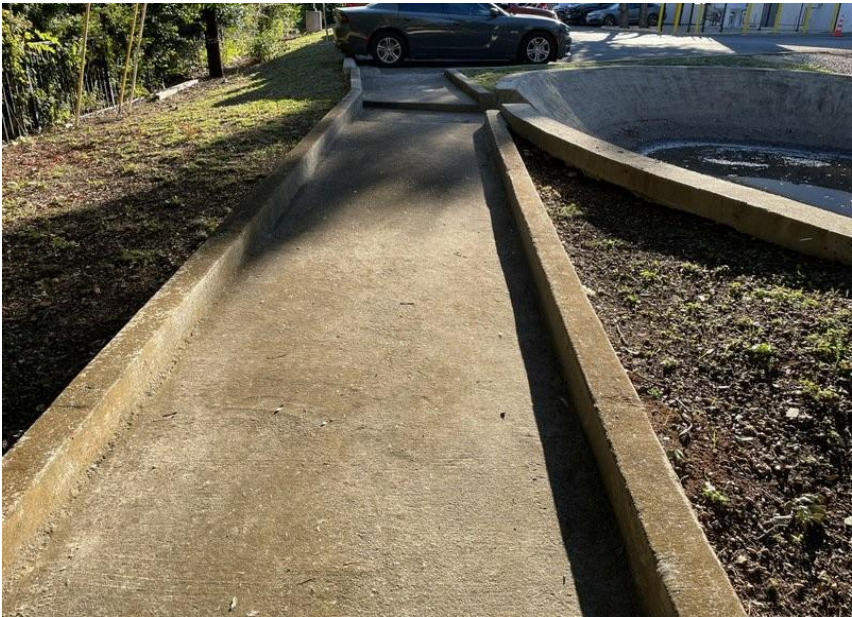
Inspection Date: 2024-11-20  
Inspector: John Sablan  
Field Inspection:  
 No Maintenance Required  
 Needs Maintenance  
 Illicit Discharge

Field Notes: Looks good. Functioning correctly after storm event.

### Photos:







## Ridge Trail Crossing

### Location Details:

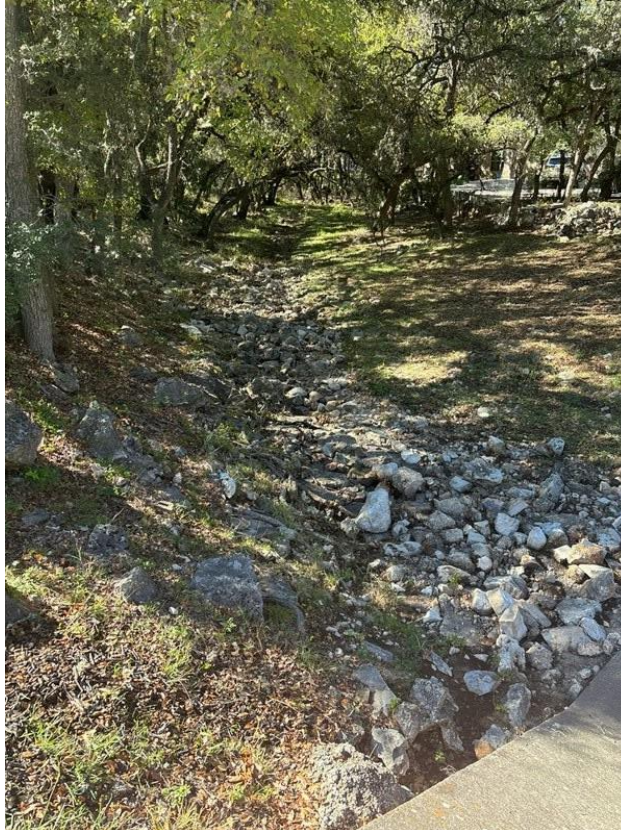
Created: 2019-06-21 20:31:46 UTC by Kevin Hoffman  
Updated: 2024-11-19 17:15:10 UTC by Jones Ard  
Location: 29.60719145, -98.47599862  
Status: Pipe  
Feature Type: Pipe  
Feature Name: Ridge Trail Crossing

### Inspection Details:

Inspection Date: 2024-11-19  
Inspector: Jones Ard  
Field Inspection:  
 No Maintenance Required  
 Needs Maintenance  
 Illicit Discharge

Field Notes: Remove rocks from culvert outlet.

### Photos:





## Rua De Matta Street Channel Outfall

### Location Details:

Created: 2019-06-21 20:07:31 UTC by Kevin Hoffman  
Updated: 2024-11-19 16:45:17 UTC by Jones Ard  
Location: 29.60098392, -98.4879024  
Status: Outfall  
Feature Type: Outfall  
Feature Name: Rua De Matta street channel outfall

### Inspection Details:

Inspection Date: 2024-11-19  
Inspector: Jones Ard  
Field Inspection:  
 No Maintenance Required  
 Needs Maintenance  
 Illicit Discharge

Field Notes: Remove debris from channel and trim vegetation from sides.

Photos:



## Rua De Matta

### Location Details:

Created: 2019-06-21 20:16:46 UTC by Kevin Hoffman  
Updated: 2024-11-19 16:28:31 UTC by Jones Ard  
Location: 29.60066296, -98.47859144  
Status: Outfall  
Feature Type: Outfall  
Feature Name: Rua De Matta

### Inspection Details:

Inspection Date: 2024-11-19  
Inspector: Jones Ard  
Field Inspection:  
 No Maintenance Required  
 Needs Maintenance  
 Illicit Discharge

Field Notes: Mild debris but looks good.

Photos:



## Sagecrest Crossing East

### Location Details:

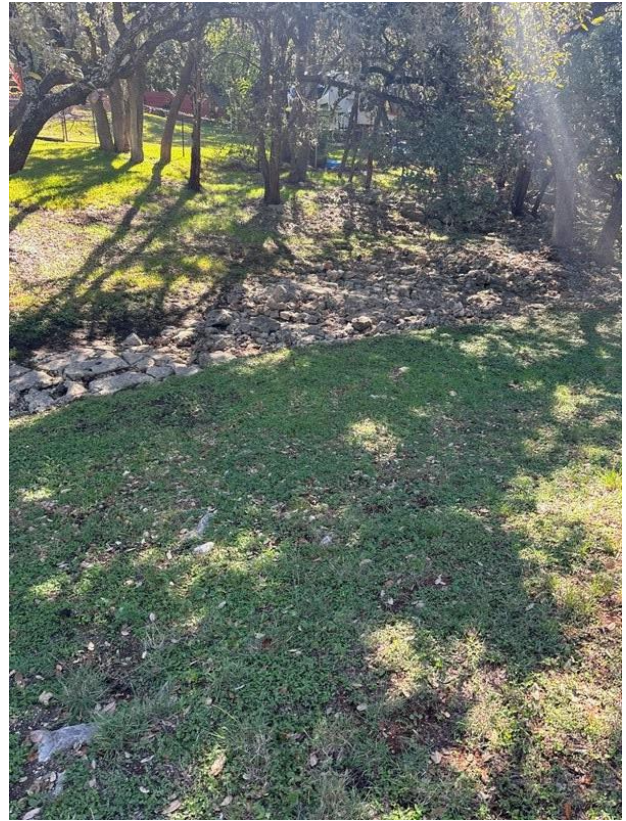
Created: 2019-06-21 20:31:46 UTC by Kevin Hoffman  
Updated: 2024-11-19 17:11:04 UTC by Jones Ard  
Location: 29.60527253, -98.47745932  
Status: Pipe  
Feature Type: Pipe  
Feature Name: Sagecrest Crossing East

### Inspection Details:

Inspection Date: 2024-11-19  
Inspector: Jones Ard  
Field Inspection:  
 No Maintenance Required  
 Needs Maintenance  
 Illicit Discharge

Field Notes: No Maintenance Required.

### Photos:



## Sagecrest Crossing West

### Location Details:

Created: 2019-06-21 20:31:46 UTC by Kevin Hoffman  
Updated: 2024-11-19 17:07:21 UTC by Jones Ard  
Location: 29.60488616, -98.48231891  
Status: Pipe  
Feature Type: Pipe  
Feature Name: Sagecrest Crossing West

### Inspection Details:

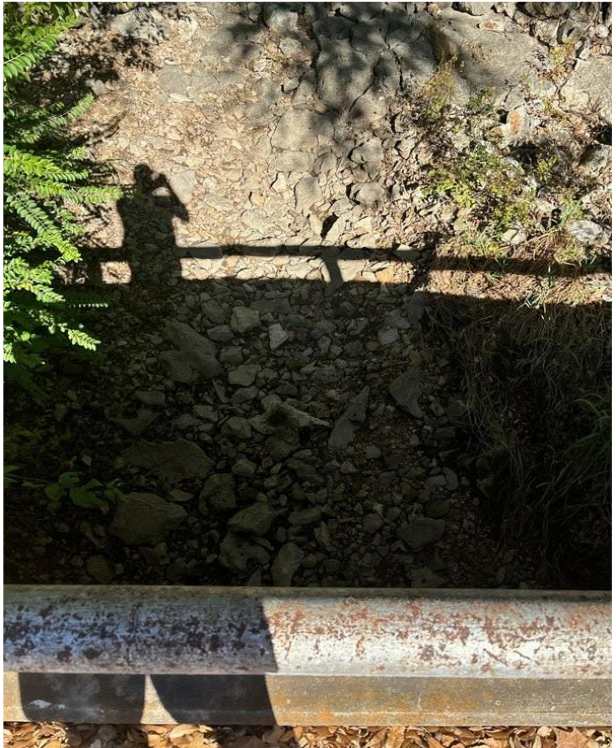
Inspection Date: 2024-11-19  
Inspector: Jones Ard  
Field Inspection:  
 No Maintenance Required  
 Needs Maintenance  
 Illicit Discharge

Field Notes: No Maintenance Required.

### Photos:







## Sequoia Dr Home Construction

### Location Details:

Created: 2024-07-08 18:52:57 UTC by John Sablan  
Updated: 2024-11-19 18:01:44 UTC by John Sablan  
Location: 29.595688353320252, -98.48124456601076  
Status: Other  
Feature Type: Other  
Feature Name: Sequoia Dr Home Construction

### Inspection Details:

Inspection Date: 2024-11-19  
Inspector: John Sablan  
Field Inspection:  
 No Maintenance Required  
 Needs Maintenance  
 Illicit Discharge

Field Notes: Looks good monitor for runoff

Photos:



## Service King Collision Repair Extended Parking Lot PCD

### Location Details:

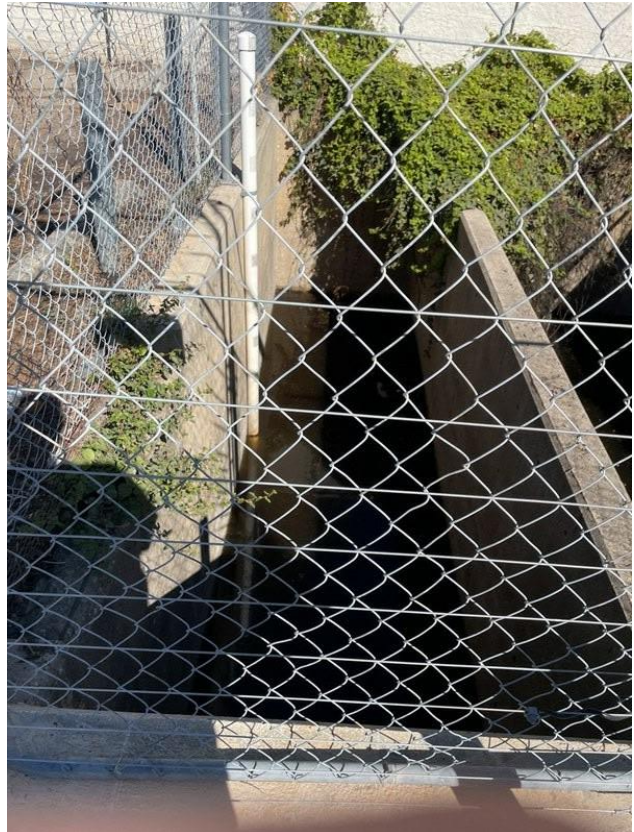
Created: 2019-06-21 20:23:39 UTC by Kevin Hoffman  
Updated: 2024-11-19 17:50:13 UTC by John Sablan  
Location: 29.59067807, -98.47572773  
Status: BMP  
Feature Type: BMP  
Feature Name: Service King Collision Repair Extended Parking Lot PCD

### Inspection Details:

Inspection Date: 2024-11-19  
Inspector: John Sablan  
Field Inspection:  
 No Maintenance Required  
 Needs Maintenance  
 Illicit Discharge

Field Notes: Looks good.

### Photos:



## Service King Collision Repair PCD

### Location Details:

Created: 2019-06-21 20:23:37 UTC by Kevin Hoffman  
Updated: 2024-11-19 17:44:22 UTC by John Sablan  
Location: 29.59074953, -98.47543578  
Status: BMP  
Feature Type: BMP  
Feature Name: Service King Collision Repair PCD

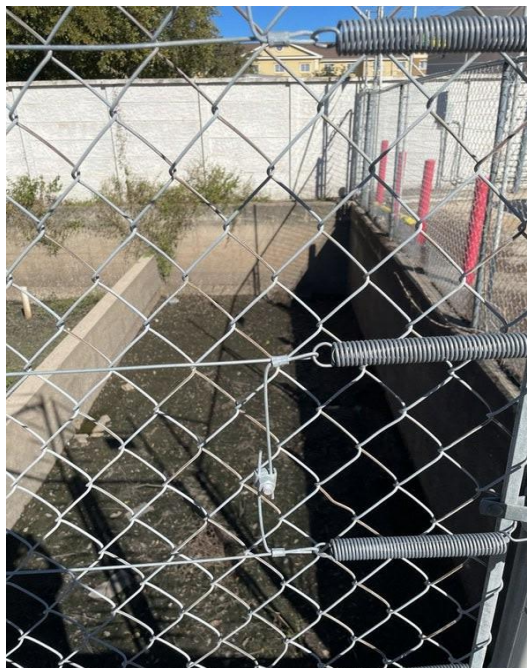
### Inspection Details:

Inspection Date: 2024-11-19  
Inspector: John Sablan  
Field Inspection:

- No Maintenance Required
- Needs Maintenance
- Illicit Discharge

Field Notes: Looks good.

### Photos:



## Shady Trails Rundown

### Location Details:

Created: 2020-07-31 00:41:26 UTC by Kevin Hunt  
Updated: 2024-11-19 17:21:00 UTC by Jones Ard  
Location: 29.60634421271383, -98.47744580358267  
Status: Outfall  
Feature Type: Outfall  
Feature Name: Shady Trails Rundown

### Inspection Details:

Inspection Date: 2024-11-19  
Inspector: Jones Ard  
Field Inspection:  
 No Maintenance Required  
 Needs Maintenance  
 Illicit Discharge

Field Notes: Trim overgrown vegetation, otherwise looks good.

Photos:



## Spillway Structure

### Location Details:

Created: 2019-11-21 19:50:47 UTC by Jamie Taylor  
Updated: 2024-11-19 15:19:57 UTC by John Sablan  
Location: 29.5962956191, -98.476181142  
Status: Skimmer/Weir  
Feature Type: Skimmer/Weir  
Feature Name: Spillway Structure

### Inspection Details:

Inspection Date: 2024-11-19  
Inspector: John Sablan  
Field Inspection:  
 No Maintenance Required  
 Needs Maintenance  
 Illicit Discharge

### Field Notes:

Weir structure is compromised, fill at upstream ends appears unchanged from summer inspection. Eastern end of weir structure severely under-mined. Not safe to walk on.

Photos:





## Sterling Browning Crossing

### Location Details:

Created: 2019-06-21 20:31:46 UTC by Kevin Hoffman  
Updated: 2024-11-19 14:33:34 UTC by Jones Ard  
Location: 29.60736362, -98.48909731  
Status: Pipe  
Feature Type: Pipe  
Feature Name: Sterling Browning Crossing

### Inspection Details:

Inspection Date: 2024-11-19  
Inspector: Jones Ard  
Field Inspection:  
 No Maintenance Required  
 Needs Maintenance  
 Illicit Discharge

Field Notes: Remove rocks and branches from inlets.

### Photos:



## Stream Gauge

### Location Details:

Created: 2019-11-20 18:22:30 UTC by Jamie Taylor  
Updated: 2024-11-19 14:40:26 UTC by John Sablan  
Location: 29.5949429034, -98.4754401818  
Status: Inlet  
Feature Type: Inlet  
Feature Name: Stream Gauge

### Inspection Details:

Inspection Date: 2024-11-19  
Inspector: John Sablan  
Field Inspection:  
 No Maintenance Required  
 Needs Maintenance  
 Illicit Discharge

Field Notes: Looks good.

Photos:



## Street Outlet 1

### Location Details:

Created: 2019-11-20 15:22:30 UTC by Jamie Taylor  
Updated: 2024-11-19 17:06:30 UTC by John Sablan  
Location: 29.5899123328, -98.4790397063  
Status: Outfall  
Feature Type: Outfall  
Feature Name: Street Outfall 1

### Inspection Details:

Inspection Date: 2024-11-19  
Inspector: John Sablan  
Field Inspection:  
 No Maintenance Required  
 Needs Maintenance  
 Illicit Discharge

Field Notes: Looks good.

Photos:



## Tall Oak Outfall

### Location Details:

Created: 2019-06-21 20:16:47 UTC by Kevin Hoffman  
Updated: 2024-11-19 17:26:41 UTC by Jones Ard  
Location: 29.60254149, -98.47885363  
Status: Outfall  
Feature Type: Outfall  
Feature Name: Tall Oak Outfall

### Inspection Details:

Inspection Date: 2024-11-19  
Inspector: Jones Ard  
Field Inspection:  
 No Maintenance Required  
 Needs Maintenance  
 Illicit Discharge

Field Notes: Remove sediment buildup.

Photos:



## Texas Roadhouse

### Location Details:

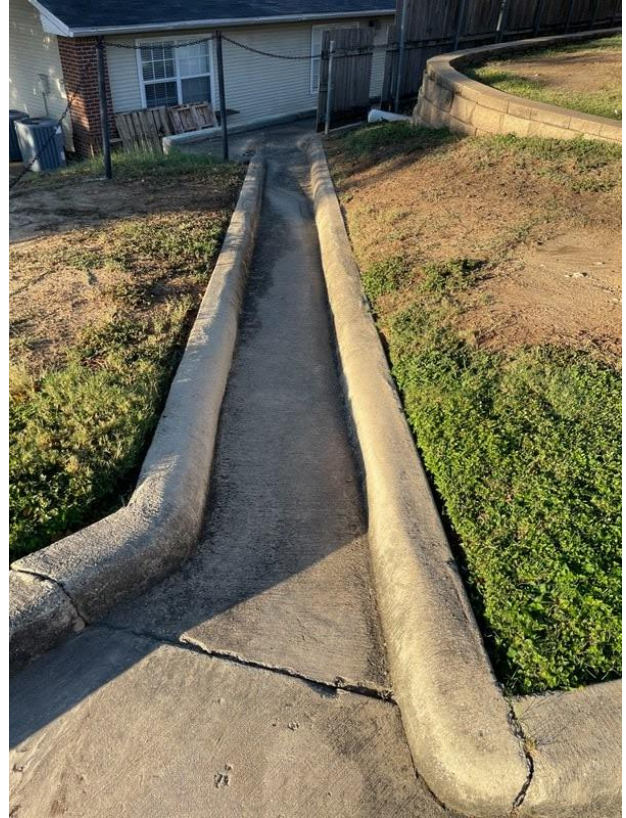
Created: 2019-11-20 18:05:35 UTC by Jamie Taylor  
Updated: 2024-11-19 14:11:14 UTC by John Sablan  
Location: 29.5962384789, -98.4728317335  
Status: Inlet  
Feature Type: Inlet  
Feature Name: Texas Roadhouse

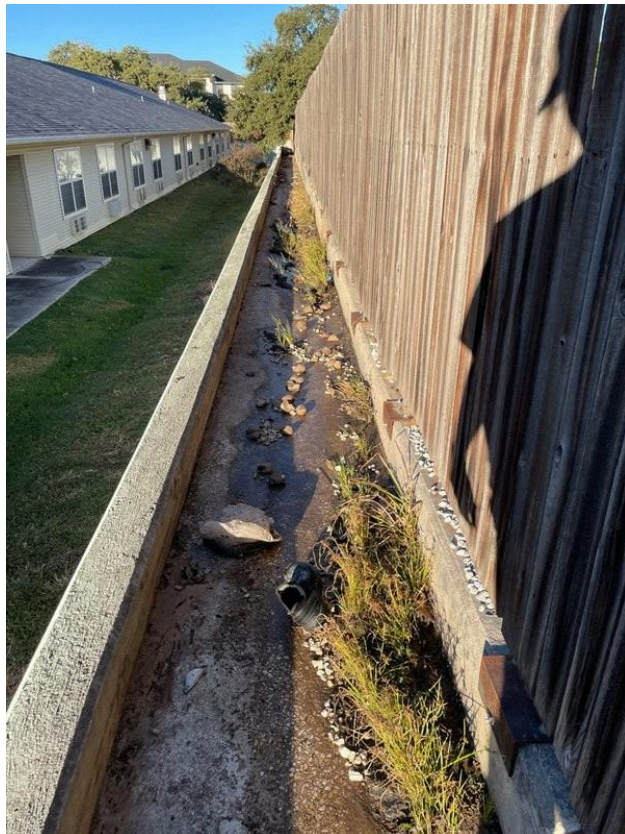
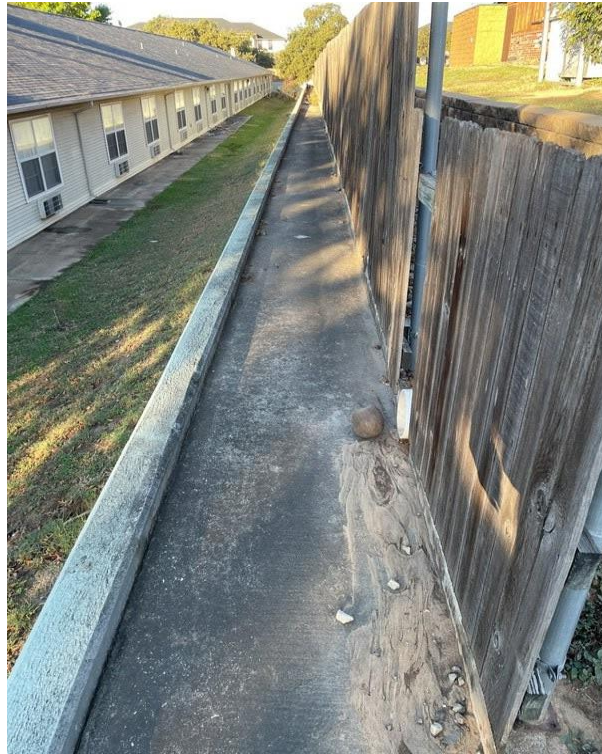
### Inspection Details:

Inspection Date: 2024-11-19  
Inspector: John Sablan  
Field Inspection:  
 No Maintenance Required  
 Needs Maintenance  
 Illicit Discharge

Field Notes: Clean out sediment and litter in channel.

### Photos:





## Tiger Tail Outfall

### Location Details:

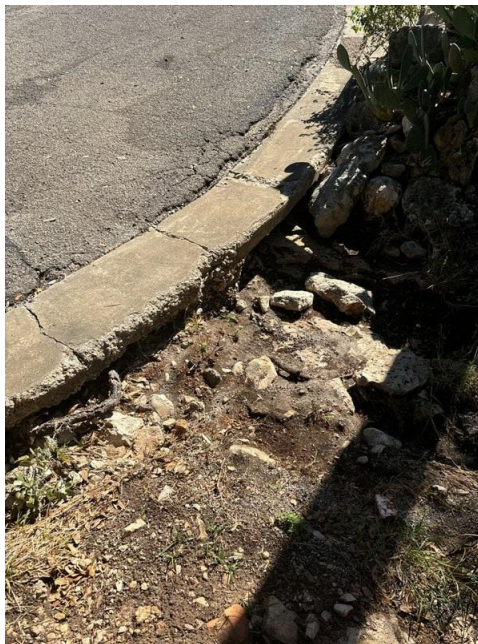
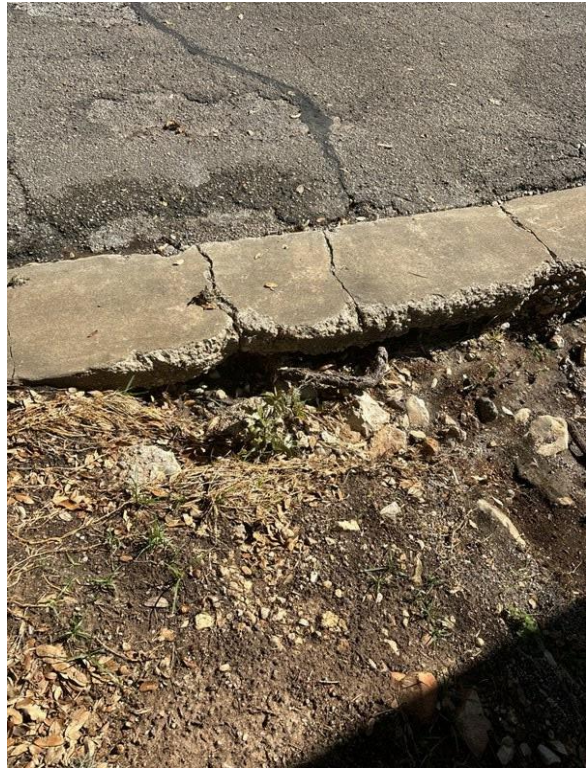
Created: 2019-06-21 20:16:47 UTC by Kevin Hoffman  
Updated: 2024-11-19 17:42:17 UTC by Jones Ard  
Location: 29.60049096, -98.47778309  
Status: Outfall  
Feature Type: Outfall  
Feature Name: Tiger Tail Outfall

### Inspection Details:

Inspection Date: 2024-11-19  
Inspector: Jones Ard  
Field Inspection:  
 No Maintenance Required  
 Needs Maintenance  
 Illicit Discharge

Field Notes: Monitor curb erosion, but otherwise looks fine.

### Photos:



### TXDOT At Lorence Creek

#### Location Details:

Created: 2019-06-21 20:16:47 UTC by Kevin Hoffman  
Updated: 2024-11-19 14:35:42 UTC by John Sablan  
Location: 29.5943814, -98.47322602  
Status: Outfall  
Feature Type: Outfall  
Feature Name: TXDOT At Lorence Creek

#### Inspection Details:

Inspection Date: 2024-11-19  
Inspector: John Sablan  
Field Inspection:  
 No Maintenance Required  
 Needs Maintenance  
 Illicit Discharge

Field Notes: Remove brush at culvert inlets.

#### Photos:







## Unknown Residential Drain Pipe Into MS4 System

### Location Details:

Created: 2019-10-29 19:03:29 UTC by Jamie Taylor  
Updated: 2024-11-19 17:52:50 UTC by Jones Ard  
Location: 29.5992759026, -98.4745094553  
Status: Pipe  
Feature Type: Pipe  
Feature Name: Unknown Residential Drain Pipe Into MS4 System

### Inspection Details:

Inspection Date: 2024-11-19  
Inspector: Jones Ard  
Field Inspection:  
 No Maintenance Required  
 Needs Maintenance  
 Illicit Discharge

Field Notes: No Maintenance Required

Photos:



## Valvoline PCD

### Location Details:

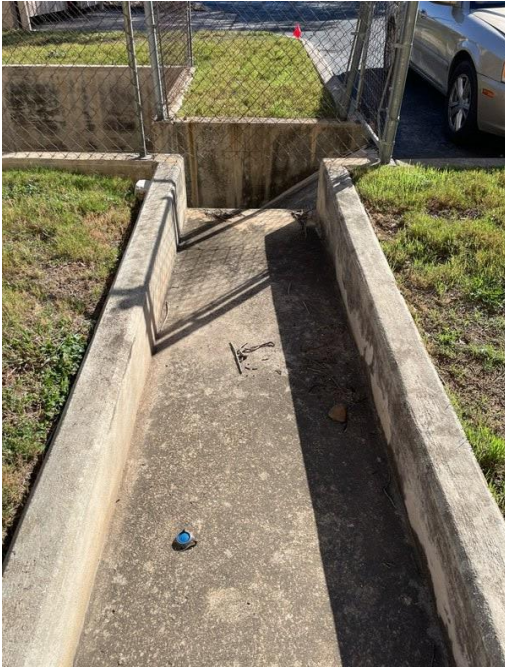
Created: 2019-06-21 20:23:37 UTC by Kevin Hoffman  
Updated: 2024-11-19 16:10:30 UTC by John Sablan  
Location: 29.59151713, -98.47460285  
Status: BMP  
Feature Type: BMP  
Feature Name: Valvoline PCD

### Inspection Details:

Inspection Date: 2024-11-19  
Inspector: John Sablan  
Field Inspection:  
 No Maintenance Required  
 Needs Maintenance  
 Illicit Discharge

Field Notes: Clean out litter and debris.

### Photos:



## Varco

### Location Details:

Created: 2019-11-20 17:37:51 UTC by Jamie Taylor  
Updated: 2024-11-19 14:03:45 UTC by John Sablan  
Location: 29.5975905941, -98.472356312  
Status: Inlet  
Feature Type: Inlet  
Feature Name: Varco

### Inspection Details:

Inspection Date: 2024-11-19  
Inspector: John Sablan  
Field Inspection:  
 No Maintenance Required  
 Needs Maintenance  
 Illicit Discharge

Field Notes: Looks good, monitor sediment buildup.

### Photos:



## Varco 2

### Location Details:

Created: 2019-11-20 17:41:51 UTC by Jamie Taylor  
Updated: 2024-11-19 14:01:40 UTC by John Sablan  
Location: 29.5978730842, -98.4736441076  
Status: Inlet  
Feature Type: Inlet  
Feature Name: Varco 2

### Inspection Details:

Inspection Date: 2024-11-19  
Inspector: John Sablan  
Field Inspection:  No Maintenance Required  
 Needs Maintenance  
 Illicit Discharge

Field Notes: Looks good.

### Photos:



## Voigt Grate Inlet

### Location Details:

Created: 2019-06-21 20:07:31 UTC by Kevin Hoffman  
Updated: 2024-11-19 14:48:59 UTC by Jones Ard  
Location: 29.6068575474, -98.4922918305  
Status: Inlet  
Feature Type: Inlet  
Feature Name: Voigt Grate Inlet

### Inspection Details:

Inspection Date: 2024-11-19  
Inspector: John Sablan  
Field Inspection:  
 No Maintenance Required  
 Needs Maintenance  
 Illicit Discharge

Field Notes: Remove trash on grate surface.

### Photos:



## Voigt Park Inlet

### Location Details:

Created: 2019-06-26 13:57:54 UTC by Jamie Taylor  
Updated: 2024-11-19 15:23:13 UTC by Jones Ard  
Location: 29.5996263126, -98.5005091131  
Status: Inlet  
Feature Type: Inlet  
Feature Name: Voigt Park Inlet

### Inspection Details:

Inspection Date: 2024-11-19  
Inspector: Jones Ard  
Field Inspection:  
 No Maintenance Required  
 Needs Maintenance  
 Illicit Discharge

Field Notes: No maintenance required.

### Photos:



## Voigt Park Outfall Pipe

### Location Details:

Created: 2019-06-26 14:08:48 UTC by Jamie Taylor  
Updated: 2024-11-19 15:34:24 UTC by Jones Ard  
Location: 29.599293977, -98.5013050586  
Status: Outfall  
Feature Type: Outfall  
Feature Name: Voigt Park Outfall Pipe

### Inspection Details:

Inspection Date: 2024-11-19  
Inspector: Jones Ard  
Field Inspection:  
 No Maintenance Required  
 Needs Maintenance  
 Illicit Discharge

Field Notes: Trim vegetation and regrade to prevent stagnation or backflow.

### Photos:



## Voigt Park Outfall

### Location Details:

Created: 2019-06-21 20:16:46 UTC by Kevin Hoffman  
Updated: 2024-11-19 15:32:22 UTC by Jones Ard  
Location: 29.59926803, -98.50133255  
Status: Outfall  
Feature Type: Outfall  
Feature Name: Voigt Park Outfall

### Inspection Details:

Inspection Date: 2024-11-19  
Inspector: Jones Ard  
Field Inspection:  
 No Maintenance Required  
 Needs Maintenance  
 Illicit Discharge

Field Notes: Mild vegetation but looks good.

Photos:



## Voigt Park Storm Sewer Outfall

### Location Details:

Created: 2019-06-21 20:16:46 UTC by Kevin Hoffman  
Updated: 2024-11-19 18:32:21 UTC by Jones Ard  
Location: 29.599499209, -98.5009949282  
Status: Outfall  
Feature Type: Outfall  
Feature Name: Voigt Park Storm Sewer Outfall

### Inspection Details:

Inspection Date: 2024-11-19  
Inspector: Jones Ard  
Field Inspection:  
 No Maintenance Required  
 Needs Maintenance  
 Illicit Discharge

Field Notes: No maintenance required.

### Photos:



## William Classen Outfall

### Location Details:

Created: 2019-06-26 15:30:10 UTC by Jamie Taylor  
Updated: 2024-11-19 17:47:53 UTC by Jones Ard  
Location: 29.59987061, -98.47526349  
Status: Outfall  
Feature Type: Outfall  
Feature Name: William Classen Outfall

### Inspection Details:

Inspection Date: 2024-11-19  
Inspector: Jones Ard  
Field Inspection:  
 No Maintenance Required  
 Needs Maintenance  
 Illicit Discharge

Field Notes: Trim overgrown vegetation.

### Photos:



## Yosemite Crossing East

### Location Details:

Created: 2019-06-21 20:31:46 UTC by Kevin Hoffman  
Updated: 2024-11-19 17:31:31 UTC by Jones Ard  
Location: 29.6042678, -98.47766904  
Status: Pipe  
Feature Type: Pipe  
Feature Name: Yosemite Crossing East

### Inspection Details:

Inspection Date: 2024-11-19  
Inspector: Jones Ard  
Field Inspection:  
 No Maintenance Required  
 Needs Maintenance  
 Illicit Discharge

Field Notes: No maintenance required.

### Photos:





## Yosemite Crossing West

### Location Details:

Created: 2019-06-21 20:31:46 UTC by Kevin Hoffman  
Updated: 2024-11-19 17:00:18 UTC by Jones Ard  
Location: 29.60389274, -98.48202439  
Status: Pipe  
Feature Type: Pipe  
Feature Name: Yosemite Crossing West

### Inspection Details:

Inspection Date: 2024-11-19  
Inspector: Jones Ard  
Field Inspection:  
 No Maintenance Required  
 Needs Maintenance  
 Illicit Discharge

Field Notes: No maintenance required.

### Photos:



